

COMMERCE CITY
EAGLE POINTE RECREATION CENTER
REMODEL AND ADDITION
6060 PARKWAY DRIVE
COMMERCE CITY, CO 80022



FURNITURE SPECIFICATION PACKAGE
AUGUST 10, 2018



EAGLE POINTE RECREATION CENTER REMODEL AND ADDITION
FURNITURE SPECIFICATION PACKAGE
AUGUST 2018

TABLE OF CONTENTS

1. Project Team Directory
2. General Notes and Conditions
3. Specification Data Sheets Including Photographic Images

PROJECT TEAM DIRECTORY

OWNER REP & SITE ADDRESS:

Eagle Pointe Recreation Center
6060 Parkway Drive
Commerce City, CO 80022
Phone: 303.669.1302
Email: courtney@i3integration.com
Contact: Courtney Smith

ARCHITECT:

Essenza Architecture
685 S. Arthur Ave., Unit 12B
Louisville, CO 80027
Phone: 303.952.5080
Email: christa@essenza-arch.com
Contact: Christa Plaza

CONTRACTOR:

Golden Triangle Construction
9777 Pyramid Court, Suite 10
Englewood, CO 80112
Phone: 303.684.9264
Email: dsamuelson@gtc1.net
Contact: Dirk Samuelson

INTERIOR DESIGNER:

Fauri Associates, LLC
7402 Church Ranch Blvd, #521
Westminster, CO 80021
Phone: 303.915.4722
Email: debra-fauriassociates@outlook.com
Contact: Debra Albright, Principal

GENERAL NOTES AND CONDITIONS

Abbreviations/Clarifications:

City of Commerce City: **CITY**

Architectural Design Team: **EA**

Furniture Purchasing & Production/Expediting/Freight/Storage/Freight claims/Installation: **DEALER**

Dealer Installation Team: **FF&E INSTALLER**

GENERAL INFORMATION / DEALER RESPONSIBILITIES

1. Pricing to be provided by furniture DEALER, including all fee markups and freight, storage, unpacking/freight & installation costs.
2. The DEALER should adhere to flammability standard requirements of all applicable local codes and should be prepared to submit all flammability certifications to the proper authorities upon request in case the bid is accepted.
3. The DEALER is responsible for all take-offs and COM yardage must be confirmed with the furniture manufacturers. Dealer/Manufacturer is responsible for testing all COM upholstery fabrics on designated furniture items. Manufacturer to install all fabrics so they are stretched and wrinkle free.
4. DEALER to recommend if special treatment should be applied to any upholstery fabrics. Dealer will be responsible for third party treatment of upholstery, if needed to meet durability and flammability code requirements.
5. DEALER to price all manufacturers and items as listed in Specification Book. All products must be Commercial Quality and pass local flammability standard requirements of all applicable furniture construction per local codes.
6. DEALER shall confirm all product numbers on FF&E Specifications prior to production. Dealer responsible for measuring and verifying size configuration for all furniture items and systems.
7. DEALER to provide lead times on all furnishings submitted to CITY for approval during bidding process.
8. Any modifications to this FF&E package and the Drawings by the DEALER must be issued as a proposal alternate to CITY/EA for final approval. No orders shall be placed until approval from CITY is obtained in writing.
9. DEALER to provide glides, feet, casters etc. per 'flooring type' as indicated on each furniture specification in this FF&E package.
10. DEALER to submit shop drawings for all workstations, conference tables, and custom furniture items that require electrical/power/data as per guidelines in FF&E Specifications.
11. The DEALER must insure that all shop drawings, finishes or samples requested in individual specifications, have been ordered from the manufacturer, for approval by CITY/EA and are reviewed and approved prior to final production of those items. DEALER must submit physical samples of all upholstery alternates for CITY/EA approval, prior to production.

12. DEALER is responsible for warehousing all furniture & equipment until installation date.
13. DEALER / FF&E INSTALLER shall inventory all keyed/tag # furnishings and equipment delivered and label all keyed/tag# by room name and number for delivery. The installer shall provide a written descriptive inventory list. CITY to provide a representative for facility maintenance and security for FF&E INSTALLER to access the building during installation of the furniture. Approximately 4 days (As per RFB by City)
14. DEALER to verify all freight, elevator and loading dimensions prior to installation.
15. Installation Time Frame: Refer to City RFB.
16. The CITY shall require a written warranty on all products purchased and delivered, with full replacement coverage against defeats in workmanship, for the manufacturer's maximum warranty period, or for a period of no less than one calendar year following final acceptance.

Power/IT Raceways and Cable Management

DEALER to review and verify electrical design for powered furniture and coordinate power feeds with contractor. Power per EA electrical drawings.

Furniture manufacturers to provide specifications for all power & data connections for each piece of furniture as required. Architectural and CITY/IT design teams to review and confirm all specifications for furniture power, data and distribution equipment, prior to final approval for purchasing and production.

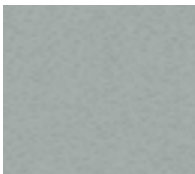
SPECIFICATION DATA SHEET

PROJECT NAME: EAGLE POINTE RECREATION CENTER REMODEL AND ADDITION
PROJECT NUMBER: 1702
ITEM NUMBER: C-1
LOCATION: 072 LOBBY
DESCRIPTION: FLOCK DUAL FABRIC ROUND LOUNGE CHAIR
MANUFACTURER: HON
MODEL #: HFLRC1DF
FINISH: TEXTURED SATIN CHROME TAPERED ROUND LEGS
DIMENSIONS: 33.5" W x 29" D x 28" H x 17" SEAT HEIGHT
FABRIC SELECTIONS: BACK UPHOLSTERY - KNOLL PARADIGM K1101, CHILI #6, 65% COTTON, 35% POLYESTER, TEFLON FINISH, 54", REPEAT 6.75" H, 9" V, 75,000+ WYZENBEEK, SEAT UPHOLSTERY - CULP CONTRACT DILLON, CORDOVAN, 100% POLYURETHANE, ANTIMICROBIAL FINISH, 54", 200,000+ DOUBLE RUBS
SPECIAL INSTRUCTIONS: ALL GLIDES, CASTERS, FEET, ETC. MUST BE COMMERCIAL QUALITY
FOR THE FOLLOWING APPLICATION: FLOOR TYPE - CARPET

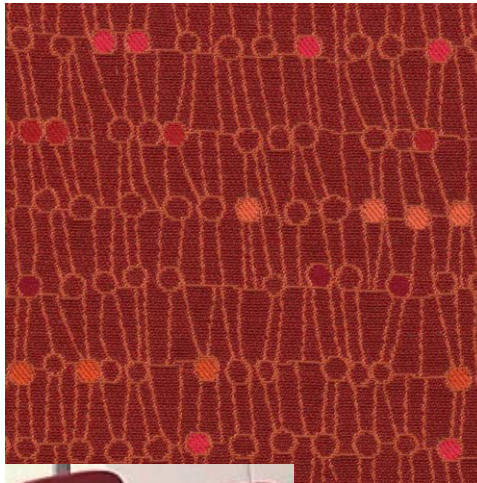
FLOCK LOUNGE CHAIR



LEG FINISH



CHAIR BACK FABRIC
KNOLL PARADIGM



SEAT UPHOLSTERY
CULP DILLON

SPECIFICATION DATA SHEET

PROJECT NAME: EAGLE POINTE RECREATION CENTER REMODEL AND ADDITION

PROJECT NUMBER: 1702

ITEM NUMBER: T-1

LOCATION: 072 LOBBY

DESCRIPTION: OCCASIONAL TABLE, ADLER TAPERED DRUM WITH METAL LEGS

MANUFACTURER: NEVINS

MODEL #: DCRNS-L1-004216

FINISH: FUSION MAPLE WILSONART 7909.60 LAMINATE SIDES, SATIN STAINLESS STEEL METAL TRIM, MAUI CORIAN 508 SOLID SURFACE TOPS, AND METAL LEGS

DIMENSIONS: 42" DIA x 16" H

SPECIAL INSTRUCTIONS: ALL GLIDES, CASTERS, FEET, ETC. MUST BE COMMERCIAL QUALITY FOR THE FOLLOWING APPLICATION: FLOOR TYPE - CARPET

LARGE DRUM TABLE



SOLID SURFACE TOP



LAMINATE FINISH



DETAIL DIAGRAMS



SPECIFICATION DATA SHEET

PROJECT NAME: EAGLE POINTE RECREATION CENTER REMODEL AND ADDITION

PROJECT NUMBER: 1702

ITEM NUMBER: T-2

LOCATION: 072 LOBBY

DESCRIPTION: SIDE TABLE, ADLER TAPERED DRUM WITH METAL PLINTH BASE

MANUFACTURER: NEVINS

MODEL #: DCRNS-L1-002022

FINISH: FUSION MAPLE WILSONART 7909.60 LAMINATE SIDES, SATIN STAINLESS STEEL METAL TRIM, MAUI CORIAN 508 SOLID SURFACE TOPS, AND METAL PLINTH BASE

DIMENSIONS: 20" DIA x 22" H

SPECIAL INSTRUCTIONS: ALL GLIDES, CASTERS, FEET, ETC. MUST BE COMMERCIAL QUALITY FOR THE FOLLOWING APPLICATION: FLOOR TYPE - CARPET

SIDE DRUM TABLE



SOLID SURFACE TOP



LAMINATE FINISH



DETAIL DIAGRAMS

**Metal
Accent Band
3/4"**



**MR1
Satin Finish**

**Solid Surface
Top
1/2"**



**SS48
Waterfall
(Top Radius)**

**Metal Plinth
Base
2"**



**PLM1
Satin Finish**

SPECIFICATION DATA SHEET

PROJECT NAME: EAGLE POINTE RECREATION CENTER REMODEL AND ADDITION
PROJECT NUMBER: 1702
ITEM NUMBER: C-2
LOCATION: 018 LOUNGE 1
DESCRIPTION: MOTIVATE FOUR LEG CAFÉ HEIGHT STOOL
MANUFACTURER: HON
MODEL #: HMG5, (NO ARMS)
SHELL COLOR SELECTION: CALYPSO
FRAME FINISH: PLATINUM METALLIC
DIMENSIONS: 21" W x 23" D x 44.5" H
SPECIAL INSTRUCTIONS: ALL GLIDES, CASTERS, FEET, ETC. MUST BE COMMERCIAL
QUALITY FOR THE FOLLOWING APPLICATION: FLOOR TYPE - CARPET

MOTIVATE FOUR LEG CAFÉ HEIGHT STOOL



SHELL COLOR



FRAME FINISH



SPECIFICATION DATA SHEET

PROJECT NAME: EAGLE POINTE RECREATION CENTER REMODEL AND ADDITION
PROJECT NUMBER: 1702
ITEM NUMBER: T-3
LOCATION: 018 LOUNGE 1
DESCRIPTION: ARRANGE CAFÉ HEIGHT TABLE WITH X-BASE AND DISC SHROUD
MANUFACTURER: HON
MODEL #: HCTRND30, HCT42SX, HCTSDS
FINISH: NATURAL MAPLE LAMINATE TOP AND EDGE AND TEXTURED PLATINUM METALLIC BASE
DIMENSIONS: 30" DIA x 42" H
SPECIAL INSTRUCTIONS: ALL GLIDES, CASTERS, FEET, ETC. MUST BE COMMERCIAL QUALITY
FOR THE FOLLOWING APPLICATION: FLOOR TYPE - CARPET

CAFÉ HEIGHT TABLE



LAMINATE FINISH



BASE FINISH



SPECIFICATION DATA SHEET

PROJECT NAME: EAGLE POINTE RECREATION CENTER REMODEL AND ADDITION
PROJECT NUMBER: 1702
ITEM NUMBER: TC-1
LOCATION: 004 RECEPTION DESK
DESCRIPTION: HEADLINER TASK CHAIR WITH FABRIC SEAT AND MEDIUM HEIGHT UPHOLSTERED BACK
MANUFACTURER: ARTOPEX
MODEL #: HD-MWU-ZN63S-NA-S-01 (NO ARMS)
FABRIC SELECTION: BACK UPHOLSTERY GRADE 3 MARATHON, RIDGE TBYD, SEAT UPHOLSTERY GRADE 2 MATRIX, MICA MX81
BASE: 5 PRONG WITH CASTERS, BLACK NYLON (ZN)
DIMENSIONS: 26" W x 24" D x 39" H, MECHANISM 635: SYNCHRO TILT AUTO ADJUSTABLE WITH SEAT SLIDER
SPECIAL INSTRUCTIONS: ALL GLIDES, CASTERS, FEET, ETC. MUST BE COMMERCIAL QUALITY
FOR THE FOLLOWING APPLICATION: FLOOR TYPE - PORCELAIN TILE

HEADLINER TASK CHAIR



SPECIFICATION DATA SHEET

PROJECT NAME: EAGLE POINTE RECREATION CENTER REMODEL AND ADDITION

PROJECT NUMBER: 1702

ITEM NUMBER: C-3

LOCATION: 005 LOUNGE 2

DESCRIPTION: TAPERED OTTOMAN WITH TAPERED ALUMINUM FEET

MANUFACTURER: HIGH POINT FURNITURE INDUSTRIES (HPFi)

MODEL #: 1584

FINISH: SATIN FINISH TAPERED ALUMINUM LEGS WITH STATIONARY FEET

DIMENSIONS: 20.5" W x 20.5" D x 30" H, (TAPERS TO 16" W x 16" D AT TOP)

FABRIC SELECTION: MAHARAM LARIAT 440401, 034 MACAW, 100% VINYL, PROTECTIVE TOPCOAT FINISH, 54", 140,000 DOUBLE RUBS

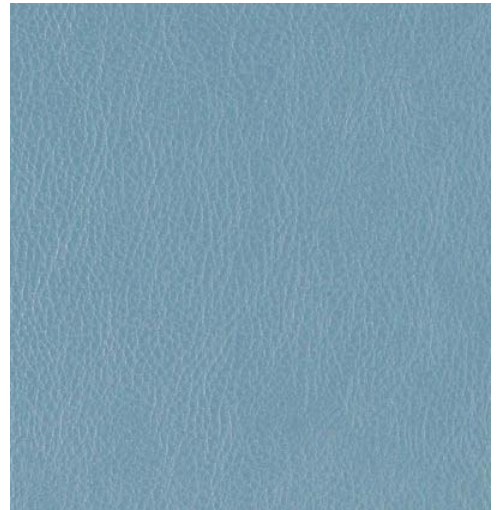
YARDAGE: 2 YARDS PER OTTOMAN

SPECIAL INSTRUCTIONS: ALL GLIDES, CASTERS, FEET, ETC. MUST BE COMMERCIAL QUALITY FOR THE FOLLOWING APPLICATION: FLOOR TYPE - PORCELAIN TILE

TAPERED STOOL WITH TAPERED FEET



MAHARAM LARIAT UPHOLSTERY



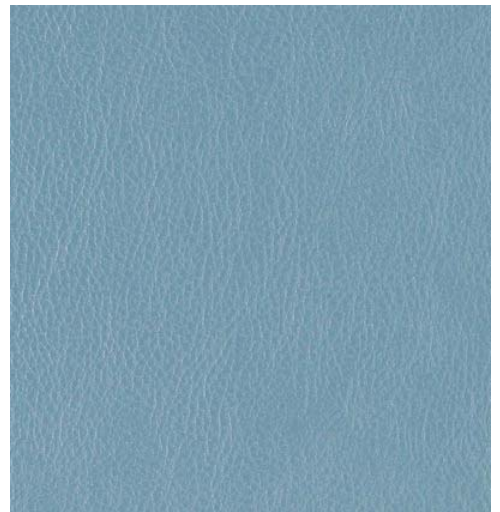
SPECIFICATION DATA SHEET

PROJECT NAME: EAGLE POINTE RECREATION CENTER REMODEL AND ADDITION
PROJECT NUMBER: 1702
ITEM NUMBER: C-4
LOCATION: 019 REGISTRATION
DESCRIPTION: TAPERED STOOL WITH GLIDE FEET
MANUFACTURER: HIGH POINT FURNITURE INDUSTRIES (HPFi)
MODEL #: 1583
FEET: BLACK 3/4" CYLINDRICAL GLIDER FEET
DIMENSIONS: 20.5" W x 20.5" D x 24" H, (TAPERS TO 16" W x 16" D AT TOP)
FABRIC SELECTION: MAHARAM LARIAT 440401, 034 MACAW, 100% VINYL, PROTECTIVE TOPCOAT FINISH, 54", 140,000 DOUBLE RUBS
YARDAGE: 2 YARDS PER OTTOMAN
SPECIAL INSTRUCTIONS: ALL GLIDES, CASTERS, FEET, ETC. MUST BE COMMERCIAL QUALITY FOR THE FOLLOWING APPLICATION: FLOOR TYPE - PORCELAIN TILE

TAPERED STOOL WITH GLIDE FEET



MAHARAM LARIAT UPHOLSTERY



SPECIFICATION DATA SHEET

PROJECT NAME: EAGLE POINTE RECREATION CENTER REMODEL AND ADDITION
PROJECT NUMBER: 1702
ITEM NUMBER: C-5
LOCATION: 052 LARGE COMMUNITY CONFERENCE ROOM
DESCRIPTION: SENTINEL CONFERENCE CHAIR WITH HIGH BACK AND ADJUSTABLE ARMS (AZ)
MANUFACTURER: ARTOPEX
MODEL #: SE2-HWN (WITH ARMS)
FABRIC SELECTION: CULP CONTRACT DILLON, STRATUS, 100% POLYURETHANE, ANTIMICROBIAL FINISH, 54", 200,000+ DOUBLE RUBS
BASE: 5 PRONG WITH CASTERS, POLISHED ALUMINUM (ZC)
DIMENSIONS: 25.5" W x 26.5" D x 43.5" H, MECHANISM #31
SPECIAL INSTRUCTIONS: ALL GLIDES, CASTERS, FEET, ETC. MUST BE COMMERCIAL QUALITY FOR THE FOLLOWING APPLICATION: FLOOR TYPE - CARPET

SENTINEL CONFERENCE CHAIR CULP DILLON UPHOLSTERY



ADJUSTABLE ARMS (AZ)



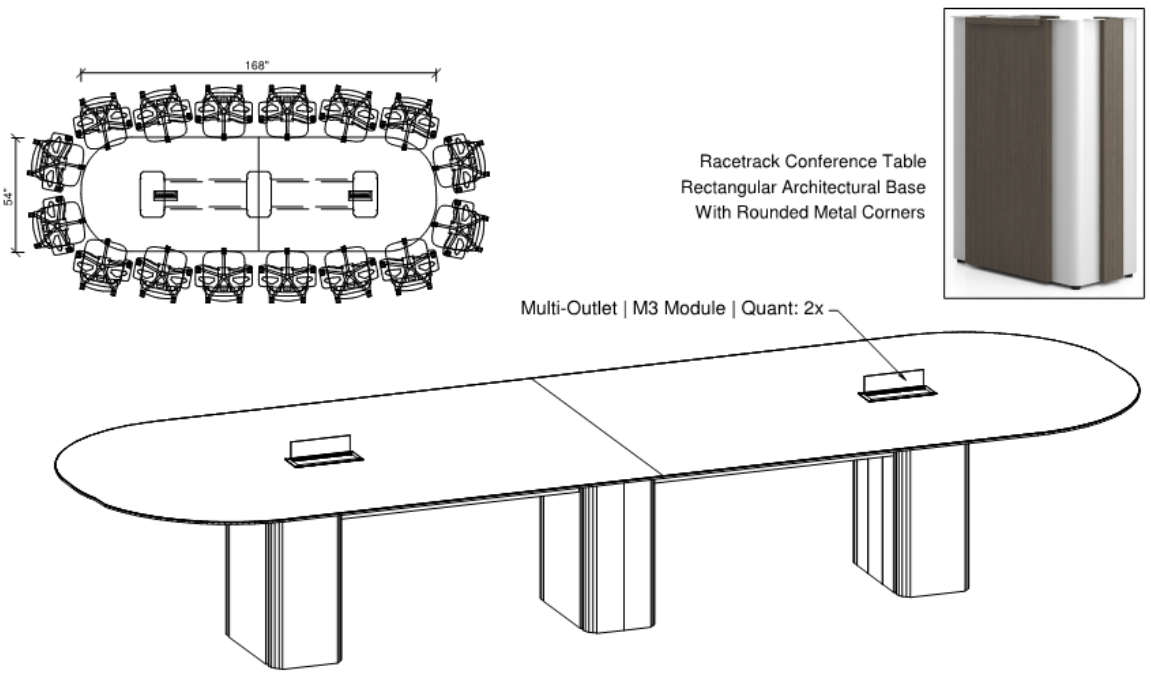
POLISHED ALUMINUM BASE (ZC)



SPECIFICATION DATA SHEET

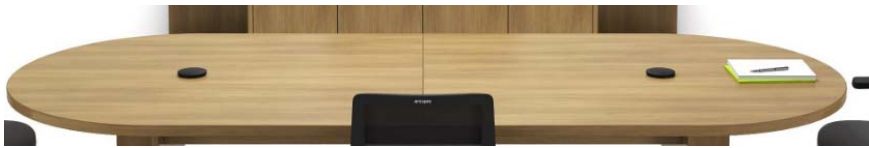
PROJECT NAME: EAGLE POINTE RECREATION CENTER REMODEL AND ADDITION
PROJECT NUMBER: 1702
ITEM NUMBER: CT-1
LOCATION: 052 LARGE COMMUNITY CONFERENCE ROOM
DESCRIPTION: TAKE OFF CONFERENCE TABLE WITH ROUNDED EDGES - "RACETRACK" SHAPE AND WITH RECTANGULAR TRIPLE BASE WITH ROUNDED METAL CORNERS
MANUFACTURER: ARTOPEX
MODEL #: CTCRS54168
FINISH: K24 DALIA LAMINATE - TOP/EDGE/BASE
METAL ACCENT FINISH: 3090 SILVER
DIMENSIONS: 54" W x 168" L x 29" H x 1-1/2" THICK EDGE
SPECIAL INSTRUCTIONS: ALL GLIDES, CASTERS, FEET, ETC. MUST BE COMMERCIAL QUALITY FOR THE FOLLOWING APPLICATION: FLOOR TYPE - CARPET

LARGE CONFERENCE ROOM TABLE



"RACETRACK" SHAPE WITH ROUNDED EDGES

LAMINATE FINISH



Power/IT Raceways and Cable Management

052 Large Community Conference Room

(2) at table CT-1, Recessed table top cable management system - Legrand TB672APAL Wiremold "Integreat" A/V table box with USB, aluminum, approx. 6" x 7"

(1) at table CT-1, Under table raceway - Mockett WM22 J-Shape wire manager w/ flange, black

(2) at table CT-1, Round grommets - Mockett XG Flip Top, 3" Flush mount, 1 slot, metallic silver



"Integreat" Table Box Cable Management System



3" Grommet



Under Table J-Shape Wire Manager
Raceway

SPECIFICATION DATA SHEET

PROJECT NAME: EAGLE POINTE RECREATION CENTER REMODEL AND ADDITION
PROJECT NUMBER: 1702
ITEM NUMBER: C-6
LOCATION: 051 SMALL CONFERENCE ROOM
DESCRIPTION: SENTINEL CONFERENCE CHAIR WITH MEDIUM BACK (NO ARMS)
MANUFACTURER: ARTOPEX
MODEL #: SE2-MWN (NO ARMS)
FABRIC SELECTION: CULP CONTRACT DILLON, STRATUS, 100% POLYURETHANE,
ANTIMICROBIAL FINISH, 54", 200,000+ DOUBLE RUBS
BASE: 5 PRONG WITH CASTERS, POLISHED ALUMINUM (ZC)
DIMENSIONS: 25.5" W x 24.5" D x 37" H, MECHANISM #31
SPECIAL INSTRUCTIONS: ALL GLIDES, CASTERS, FEET, ETC. MUST BE COMMERCIAL QUALITY
FOR THE FOLLOWING APPLICATION: FLOOR TYPE - CARPET

SENTINEL MEDIUM BACK



CULP DILLON UPHOLSTERY



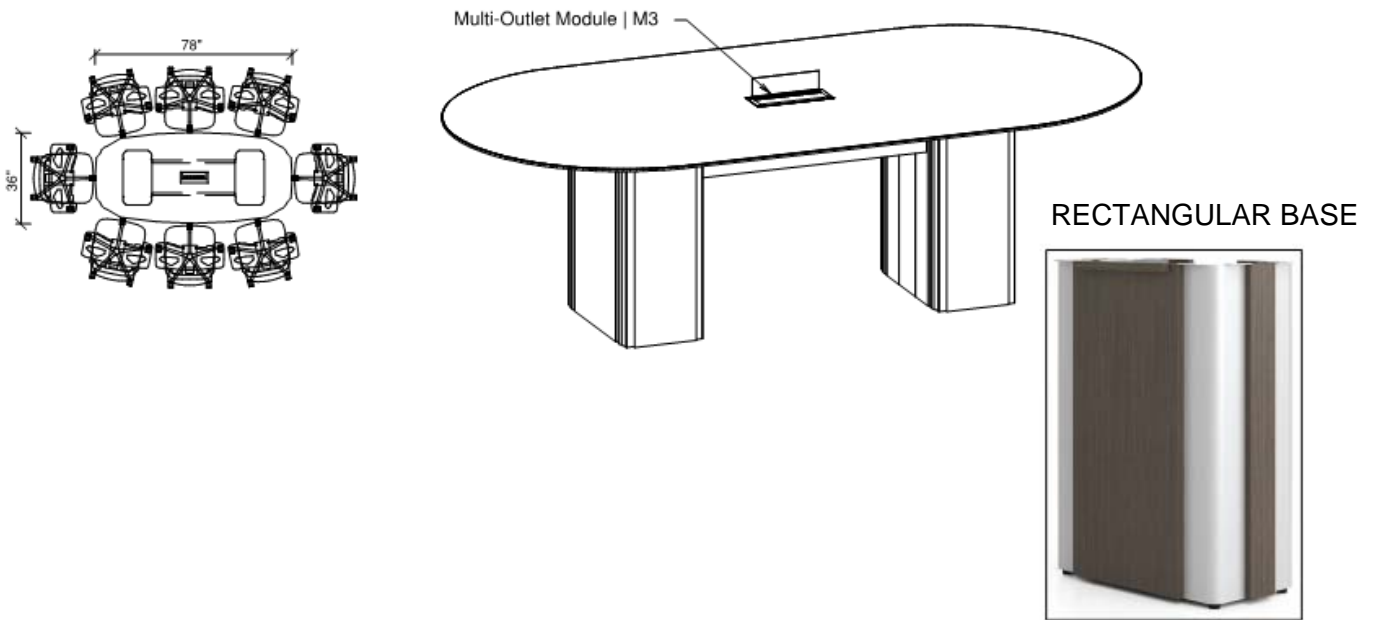
POLISHED ALUMINUM BASE (ZC)



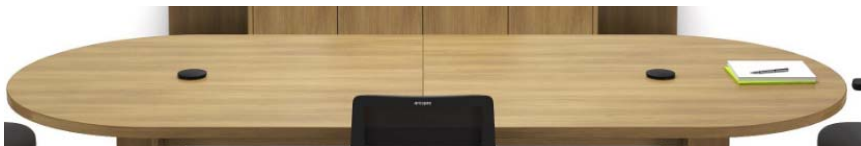
SPECIFICATION DATA SHEET

PROJECT NAME: EAGLE POINTE RECREATION CENTER REMODEL AND ADDITION
PROJECT NUMBER: 1702
ITEM NUMBER: CT-2
LOCATION: 051 SMALL CONFERENCE ROOM
DESCRIPTION: TAKE OFF CONFERENCE TABLE WITH RECTANGULAR DOUBLE BASE WITH ROUNDED METAL CORNERS
MANUFACTURER: ARTOPEX
MODEL #: CTCP3672
FINISH: K24 DALIA LAMINATE - TOP/EDGE/BASE
METAL ACCENT FINISH: 3090 SILVER
DIMENSIONS: 36" W x 72" L x 29" H x 1" THICK EDGE
SPECIAL INSTRUCTIONS: ALL GLIDES, CASTERS, FEET, ETC. MUST BE COMMERCIAL QUALITY FOR THE FOLLOWING APPLICATION: FLOOR TYPE - CARPET

SMALL CONFERENCE ROOM TABLE



“RACETRACK” SHAPE WITH ROUNDED EDGES



LAMINATE FINISH



Power/IT Raceways and Cable Management

051 Small Conference Room

(1) At table CT-2, Recessed table top cable management system - Legrand TB672APAL Wiremold "Integreat" A/V table box with USB, aluminum, approx. 6" x 7"

(1) At table CT-2, Under table raceway - Mockett WM22 J-Shape wire manager w/ flange, black

(2) At table CT-2, Round grommets - Mockett XG Flip Top, 3" Flush mount, 1 slot, metallic silver



"Integreat" Table Box Cable Management System



3" Grommet



Under Table J-Shape Wire Manager

Raceway

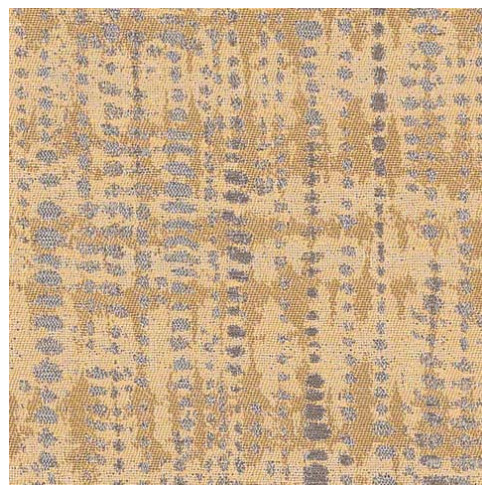
SPECIFICATION DATA SHEET

PROJECT NAME: EAGLE POINTE RECREATION CENTER REMODEL AND ADDITION
PROJECT NUMBER: 1702
ITEM NUMBER: C-7
LOCATION: 057 LACTATION ROOM
DESCRIPTION: LENOX STEEL GUEST CHAIR
MANUFACTURER: LESRO
MODEL #: LS1801G7
DIMENSIONS: 22.5" W x 24.5" D x 32" H
FRAME FINISH: SILVER
FABRIC SELECTION: STINSON, ETHEREAL COLLECTION, VANISH, COLOR: 64112 MIXED METALS, 100% POST INDUSTRIAL RECYCLED SOLUTION DYED NYLON, STAIN RESISTANT FINISH, 54", 100,000+ DOUBLE RUBS
YARDAGE: 1.5 YARD PER CHAIR
SPECIAL INSTRUCTIONS: ALL GLIDES, CASTERS, FEET, ETC. MUST BE COMMERCIAL QUALITY
FOR THE FOLLOWING APPLICATION: FLOOR TYPE - CARPET

LESRO LENOX CHAIR



STINSON VANISH FABRIC



SPECIFICATION DATA SHEET

PROJECT NAME: EAGLE POINTE RECREATION CENTER REMODEL AND ADDITION
PROJECT NUMBER: 1702
ITEM NUMBER: T-5
LOCATION: 057 LACTATION ROOM
DESCRIPTION: LENOX STEEL END TABLE
MANUFACTURER: LESRO
MODEL #: LS1285T5
FINISH: TABLE TOP LAMINATE - EARTHEN TWILL
FRAME FINISH: SILVER
DIMENSIONS: 20" W x 20" L x 20" H
SPECIAL INSTRUCTIONS: ALL GLIDES, CASTERS, FEET, ETC. MUST BE COMMERCIAL QUALITY
FOR THE FOLLOWING APPLICATION: FLOOR TYPE - CARPET

LESRO LENOX END TABLE



LAMINATE FINISH



FRAME FINISH



SPECIFICATION DATA SHEET

PROJECT NAME: EAGLE POINTE RECREATION CENTER REMODEL AND ADDITION
PROJECT NUMBER: 1702
ITEM NUMBER: C-8
LOCATION: 067 BREAK ROOM
DESCRIPTION: FLAVORS STACK CHAIR
MANUFACTURER: SMITH SYSTEM
MODEL #: 11849
SHELL COLOR SELECTION: RED
FRAME FINISH: CHROME
DIMENSIONS: 19.5" W x 20.5" D x 31" H
SPECIAL INSTRUCTIONS: ALL GLIDES, CASTERS, FEET, ETC. MUST BE COMMERCIAL QUALITY
FOR THE FOLLOWING APPLICATION: FLOOR TYPE - LVT

FLAVORS STACK CHAIR

SHELL COLOR



FRAME FINISH



SPECIFICATION DATA SHEET

PROJECT NAME: EAGLE POINTE RECREATION CENTER REMODEL AND ADDITION
PROJECT NUMBER: 1702
ITEM NUMBER: T-4
LOCATION: 067 BREAK ROOM
DESCRIPTION: CAFÉ TABLE WITH SQUARE TOP AND 24" CRISS-CROSS BASE
MANUFACTURER: SMITH SYSTEM
MODEL #: 01501
FINISH: 7909-60 FUSION MAPLE LAMINATE TOP
BASE FINISH: PLATINUM
EDGE PROFILE: D, T-MOLD, COLOR RED
DIMENSIONS: 30" W x 30" L x 29" H x 1-1/4" THICK EDGE
SPECIAL INSTRUCTIONS: ALL GLIDES, CASTERS, FEET, ETC. MUST BE COMMERCIAL QUALITY
FOR THE FOLLOWING APPLICATION: FLOOR TYPE - LVT

CAFÉ TABLE



LAMINATE FINISH



EDGE COLOR



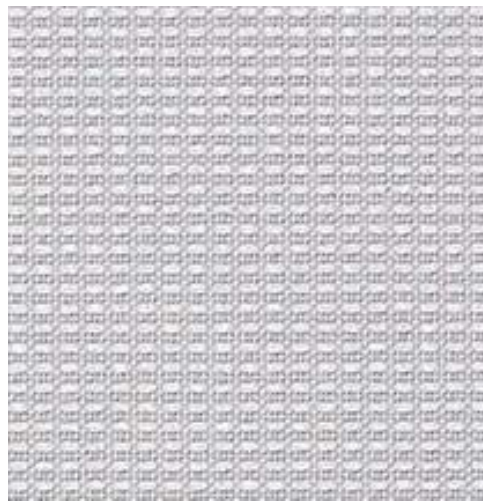
BASE FINISH



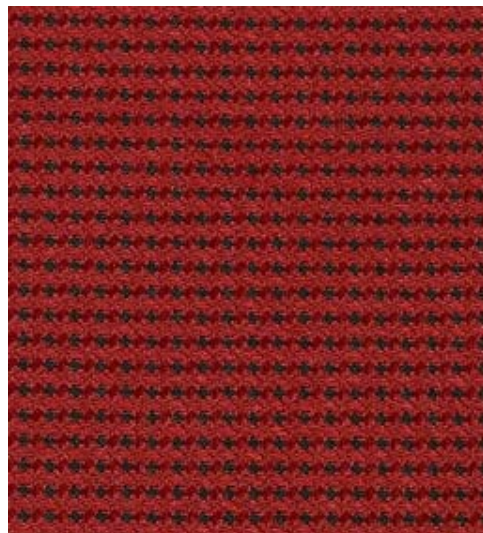
SPECIFICATION DATA SHEET

PROJECT NAME: EAGLE POINTE RECREATION CENTER REMODEL AND ADDITION
PROJECT NUMBER: 1702
ITEM NUMBER: TC-2
LOCATION: 068 FLEX SPACE
DESCRIPTION: IGNITION LOW BACK TASK STOOL, ARMLESS, UPHOLSTERED SEAT AND BACK
MANUFACTURER: HON
MODEL #: HITSU
BASE: 5 STAR WITH CASTERS
DIMENSIONS: 27.5" W x 27.5" D x 53" H
FABRIC SELECTION: BACK UPHOLSTERY - MOMENTUM MILLENNIUM, COLOR - STEEL 09143033, 85% POST CONSUMER RECYCLED POLYESTER, 15% POLYESTER, 56", REPEAT 1/8" x 1/8", SOIL AND STAIN RESISTANT FINISH, 200,000 DOUBLE RUBS, SEAT UPHOLSTERY MOMENTUM EXPO, COLOR - FESTIVE 09089790, 100% RECYCLED POLYESTER, 54", REPEAT 1/8" x 1/8", 102,000 DOUBLE RUBS
YARDAGE: 3 YARDS PER CHAIR (1 YARD FOR SEAT, 2 YARDS FOR BACK)
SPECIAL INSTRUCTIONS: ALL GLIDES, CASTERS, FEET, ETC. MUST BE COMMERCIAL QUALITY FOR THE FOLLOWING APPLICATION: FLOOR TYPE - LVT

IGNITION TASK STOOL



CHAIR BACK FABRIC
MOMENTUM MILLENNIUM



CHAIR SEAT FABRIC
MOMENTUM EXPO

SPECIFICATION DATA SHEET

PROJECT NAME: EAGLE POINTE RECREATION CENTER REMODEL AND ADDITION
PROJECT NUMBER: 1702
ITEM NUMBER: F-1
LOCATION: 068 FLEX SPACE
DESCRIPTION: 2 DRAWER PEDESTAL FILE
MANUFACTURER: ARTOPEX
MODEL #: MP45-18-1212
FINISH: 3090 SILVER ENAMEL
DIMENSIONS: 15" W x 18" D x 25.75" H
SPECIAL INSTRUCTIONS: ALL GLIDES, CASTERS, FEET, ETC. MUST BE COMMERCIAL QUALITY
FOR THE FOLLOWING APPLICATION: FLOOR TYPE - LVT

METAL PEDESTAL FILE CABINET



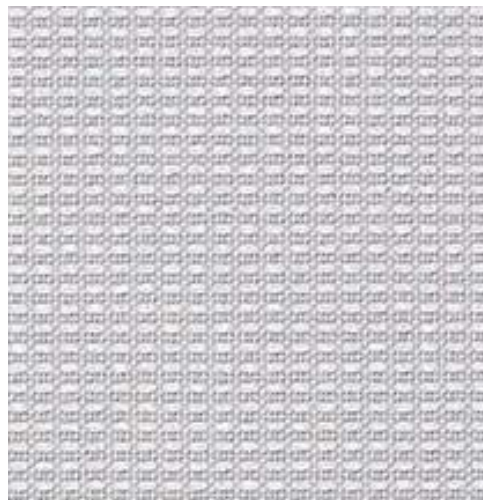
FINISH COLOR



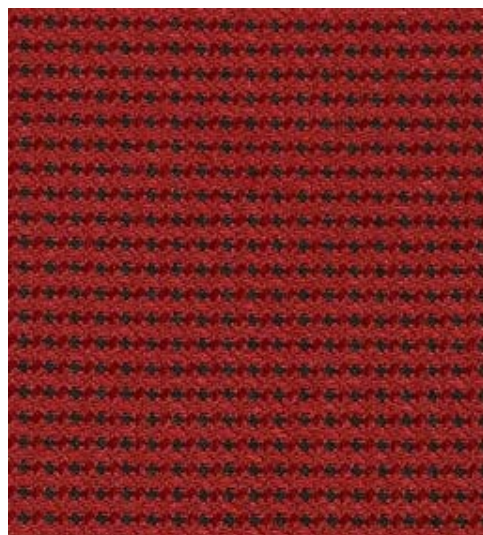
SPECIFICATION DATA SHEET

PROJECT NAME: EAGLE POINTE RECREATION CENTER REMODEL AND ADDITION
PROJECT NUMBER: 1702
ITEM NUMBER: TC-3
LOCATION: 068 FLEX SPACE
DESCRIPTION: IGNITION LOW BACK TASK STOOL, WITH ARMS, UPHOLSTERED SEAT AND BACK
MANUFACTURER: HON
MODEL #: HITLU
BASE: 5 STAR WITH CASTERS
DIMENSIONS: 26.5" W x 26.5" D x 40.5" H
FABRIC SELECTION: BACK UPHOLSTERY - MOMENTUM MILLENNIUM, COLOR - STEEL 09143033, 85% POST CONSUMER RECYCLED POLYESTER, 15% POLYESTER, 56", REPEAT 1/8" x 1/8", SOIL AND STAIN RESISTANT FINISH, 200,000 DOUBLE RUBS, SEAT UPHOLSTERY MOMENTUM EXPO, COLOR - FESTIVE 09089790, 100% RECYCLED POLYESTER, 54", REPEAT 1/8" x 1/8", 102,000 DOUBLE RUBS
YARDAGE: 3 YARDS PER CHAIR (1 YARD FOR SEAT, 2 YARDS FOR BACK)
SPECIAL INSTRUCTIONS: ALL GLIDES, CASTERS, FEET, ETC. MUST BE COMMERCIAL QUALITY FOR THE FOLLOWING APPLICATION: FLOOR TYPE - LVT

IGNITION TASK STOOL



**CHAIR BACK FABRIC
MOMENTUM MILLENNIUM**

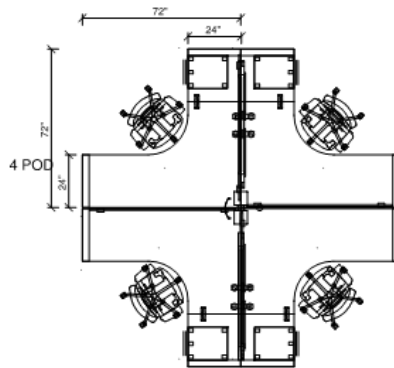


**CHAIR SEAT FABRIC
MOMENTUM EXPO**

SPECIFICATION DATA SHEET

PROJECT NAME: EAGLE POINTE RECREATION CENTER REMODEL AND ADDITION
 PROJECT NUMBER: 1702
 ITEM NUMBER: WS-1
 LOCATION: 068 FLEX SPACE
 DESCRIPTION: AIR LINE WORKSTATIONS
 MANUFACTURER: ARTOPEX
 FINISH: WORK SURFACE - 1" THICK, FINISH - MARITIME MAPLE LAMINATE TOP WITH SELF EDGE
 DIMENSIONS: 60" W x 60" L x 29" H
 LEFT EXTENDED CORNER SURFACE: 48" x 24" x 72" x 24" (2 EA)
 RIGHT EXTENDED CORNER SURFACE: 48" x 24" x 72" x 24" (2 EA)
 SQUARE SURFACE 24" x 24" (4 EA)
 LEGS: TECHNO DOUBLE LEG, 24" W x 28" H, FINISH - 3090 SILVER ENAMEL (8 EA)
 PRIVACY PANEL WITH FABRIC COVERED TACK BOARD
 PRIVACY PANEL 10" H x 66" W WITH DUAL HEIGHT BRACKETS - METAL (4 EA)
 TACK BOARD 10" H x 66" W (4 EA) FABRIC WRAPPED COVER - GRADE 1 WHISPER II,
 COLOR - TRANQUILITY WH80
 MOBILE PEDESTAL FILE WITH SEAT CUSHION (4 EA), MP45-18-612CA, FINISH 3090 SILVER ENAMEL, 22" x 18" x 15" WITH CASTERS, RECTANGULAR SEAT CUSHION 18" x 15", FABRIC MOMENTUM, EXPO, COLOR - FESTIVE
 SPECIAL INSTRUCTIONS: ALL GLIDES, CASTERS, FEET, ETC. MUST BE COMMERCIAL QUALITY FOR THE FOLLOWING APPLICATION: FLOOR TYPE - LVT

WORKSTATIONS



MOBILE PEDESTAL FINISH COLOR



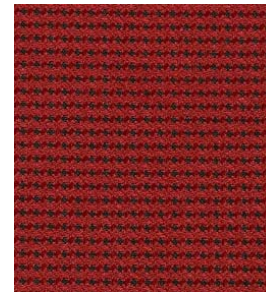
WORK SURFACE FINISH



TACK BOARD FABRIC



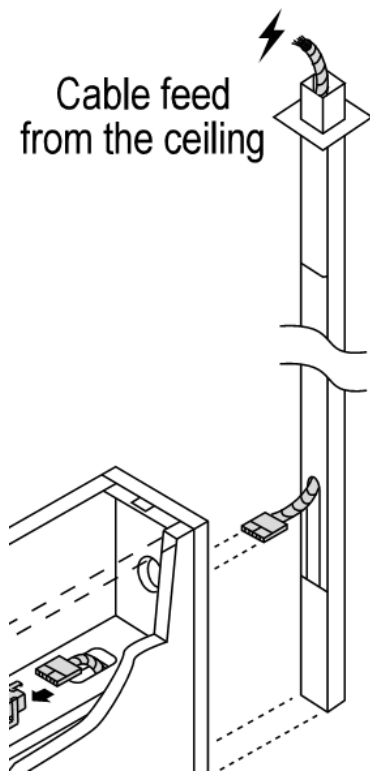
MOBILE PEDESTAL FABRIC



Power/IT Raceways and Cable Management

068 Flex Space

- (1) Vertical power pole at WS-1 - Artopex Air Line furniture system, power pole, frost grey
- (4) Under counter raceways at workstations WS-1 - Artopex Air Line furniture system, harness tray can hold up to 4 duplex outlets
- (4) Round grommets, one at each workstation WS-1 - Artopex accessory, 3" flush mount, 1 slot, gray
- (3) Round grommets at millwork counter - Mockett XG Flip Top, 3" flush mount, 1 slot, metallic silver
- (1) Under table raceway for computer cord management at millwork counter - Mockett WM22 J-Shape wire manager w/ flange, black
- (3) at millwork counter and (4) at WS-1, Pop-Up counter top retractable power module - Mockett PCS36B/U2, satin aluminum, approx. 8" x 4"

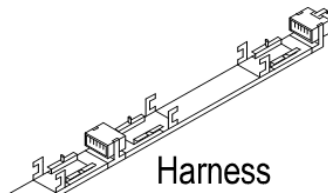


Vertical Power Pole



Frost (3065)

Power Pole Finish



Harness

Under Counter Harness



Artopex Grommet



Mockett Grommet



Pop-Up Power Module



Under Table Wire Manager Raceway

SPECIFICATION DATA SHEET

PROJECT NAME: EAGLE POINTE RECREATION CENTER REMODEL AND ADDITION
PROJECT NUMBER: 1702
ITEM NUMBER: C-9
LOCATION: 046 TEEN ROOM
DESCRIPTION: ALPINE COLLECTION SUMMIT LOUNGE CHAIR WITH CYLINDER LEGS
MANUFACTURER: INTEGRA SEATING
MODEL #: SML_SMBL_SMSL
LEG FINISH: BRUSHED CHROME 4S-MC-BC
DIMENSIONS: 28" W x 28" D x 30.5" H
FABRIC SELECTIONS: CHAIR BACK UPHOLSTERY - MOMENTUM CENTRIC, PIMENTO, 72% POST CONSUMER RECYCLED POLYESTER, 28% SOLUTION DYED NYLON, INCASE FABRIC PROTECTION FINISH, 54", REPEAT 3 1/8" L, 3 1/8" W, 95,000 DOUBLE RUBS, CHAIR SEAT UPHOLSTERY - MAHARAM LARIAT 440401, 024 ZINC, 100% VINYL, PROTECTIVE TOPCOAT FINISH, 54", 140,000 DOUBLE RUBS
SPECIAL INSTRUCTIONS: ALL GLIDES, CASTERS, FEET, ETC. MUST BE COMMERCIAL QUALITY FOR THE FOLLOWING APPLICATION: FLOOR TYPE - CARPET

CHAIR BACK FABRIC
MOMENTUM CENTRIC



SUMMIT LOUNGE CHAIR



CHAIR SEAT FABRIC
MAHARAM LARIAT



LEG FINISH

SPECIFICATION DATA SHEET

PROJECT NAME: EAGLE POINTE RECREATION CENTER REMODEL AND ADDITION

PROJECT NUMBER: 1702

ITEM NUMBER: T-7

LOCATION: 046 TEEN ROOM

DESCRIPTION: OCCASIONAL TABLE, INTEGRA DRUM WITH BLACK METAL BASE

MANUFACTURER: INTEGRA

FINISH: PIONITE HARDROCK MAPLE WM791-SD SUEDE FINISH LAMINATE SIDES, INTEGRA LG HI-MACS VENETIAN SAND GO42 SOLID SURFACE TOP, AND 3" BLACK METAL BASE WITH BLACK EDGE AND BOTTOM PROTECTOR

DIMENSIONS: 18" DIA x 18" H

SPECIAL INSTRUCTIONS: ALL GLIDES, CASTERS, FEET, ETC. MUST BE COMMERCIAL QUALITY FOR THE FOLLOWING APPLICATION: FLOOR TYPE - CARPET

INTEGRA DRUM TABLE



SOLID SURFACE TOP



LAMINATE FINISH



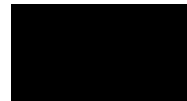
SPECIFICATION DATA SHEET

PROJECT NAME: EAGLE POINTE RECREATION CENTER REMODEL AND ADDITION
PROJECT NUMBER: 1702
ITEM NUMBER: TC-4
LOCATION: 046 TEEN ROOM
DESCRIPTION: KOOL COLLECTION TASK CHAIR, ARMLESS
MANUFACTURER: KFI SEATING
MODEL #: TK2300-P10-P10
SHELL COLOR: BLACK POLYPROPYLENE
SEAT COLOR: BLACK PERFORATED POLYPROPYLENE
FRAME: SILVER POWDER COATED FRAME
BASE: 5 STAR SILVER NYLON BASE WITH CASTERS
DIMENSIONS: 19.5" W x 18.5" D x 30.5" - 35" ADJ. HT.
SPECIAL INSTRUCTIONS: ALL GLIDES, CASTERS, FEET, ETC. MUST BE COMMERCIAL QUALITY
FOR THE FOLLOWING APPLICATION: FLOOR TYPE - CARPET

ARMLESS TASK CHAIR



SHELL COLOR



SEAT COLOR



SPECIFICATION DATA SHEET

PROJECT NAME: EAGLE POINTE RECREATION CENTER REMODEL AND ADDITION
PROJECT NUMBER: 1702
ITEM NUMBER: S-1 & S-2
LOCATION: 046 TEEN ROOM
DESCRIPTION: EVE COLLECTION STRAIGHT BANQUETTE WITH ATTACHED SHELF ON BACK
MANUFACTURER: HIGH POINT FURNITURE INDUSTRIES (HPFi)
MODEL #: S-1: 5875-BS / S-2: 5876-BS
DIMENSIONS: S-1: 46" W x 36" D x 53" H, S-2: 67" W x 36" D x 53" H, SHELF: 42" A.F.F.
SHELF: LAMINATE HPFi - DRIFTWOOD (DW)
LEGS: TAPERED ROUND, FINISH: BRUSHED CHROME
FABRIC SELECTIONS: BACK UPHOLSTERY - STINSON SYMMETRY, 63931 MULTI, 57%
POLYESTER, 43% SOLUTION DYED NYLON, STAIN RESISTANT FINISH, 54", REPEAT 14.25 H, 15.25
V, 100,000+ DOUBLE RUBS, SEAT UPHOLSTERY - MAHARAM LARIAT 440401, 024 ZINC, 100%
VINYL, PROTECTIVE TOPCOAT FINISH, 54", 140,000 DOUBLE RUBS
SPECIAL INSTRUCTIONS: ALL GLIDES, CASTERS, FEET, ETC. MUST BE COMMERCIAL QUALITY
FOR THE FOLLOWING APPLICATION: FLOOR TYPE - CARPET

STRAIGHT BANQUETTE



**CHAIR BACK FABRIC
STINSON SYMMETRY**



**CHAIR SEAT FABRIC
MAHARAM LARIAT**



LAMINATE FINISH



SPECIFICATION DATA SHEET

PROJECT NAME: EAGLE POINTE RECREATION CENTER REMODEL AND ADDITION
PROJECT NUMBER: 1702
ITEM NUMBER: C-10
LOCATION: 046 TEEN ROOM
DESCRIPTION: VIVA BARSTOOL
MANUFACTURER: GROSFILLEX
MODEL #: US929721
SHELL COLOR SELECTION: SAGE GREEN/CHARCOAL
DIMENSIONS: 18.75" W x 21.75" D x 47" H x 30" SEAT HEIGHT
SPECIAL INSTRUCTIONS: ALL GLIDES, CASTERS, FEET, ETC. MUST BE COMMERCIAL QUALITY
FOR THE FOLLOWING APPLICATION: FLOOR TYPE - CARPET

VIVA BARSTOOL



SPECIFICATION DATA SHEET

PROJECT NAME: EAGLE POINTE RECREATION CENTER REMODEL AND ADDITION
PROJECT NUMBER: 1702
ITEM NUMBER: T-6
LOCATION: 046 TEEN ROOM
DESCRIPTION: ROUND MODE BAR HEIGHT TABLE
MANUFACTURER: KFI SEATING
MODEL #: FUSE COLLECTION F30RD / B2015-41
FINISH: LAMINATE TOP FORMICA SILVER RIFTWOOD #6413-NG, BASE SILVER POWDER COAT
EDGE: T-MOLD, COLOR BLACK
DIMENSIONS: 30" DIA x 41" H
SPECIAL INSTRUCTIONS: ALL GLIDES, CASTERS, FEET, ETC. MUST BE COMMERCIAL QUALITY
FOR THE FOLLOWING APPLICATION: FLOOR TYPE - CARPET

BAR HEIGHT TABLE



X-Base (SL)

LAMINATE FINISH



BASE FINISH



SPECIFICATION DATA SHEET

PROJECT NAME: EAGLE POINTE RECREATION CENTER REMODEL AND ADDITION
PROJECT NUMBER: 1702
ITEM NUMBER: C-11
LOCATION: 047 TECH LAB
DESCRIPTION: INTUIT STACK CHAIR
MANUFACTURER: SMITH SYSTEM
MODEL #: 00509
SHELL COLOR SELECTION: CERULEAN
FRAME FINISH: PLATINUM
DIMENSIONS: 18.9" W x 19.9" D x 30.5" H x 18" SEAT HEIGHT
SPECIAL INSTRUCTIONS: ALL GLIDES, CASTERS, FEET, ETC. MUST BE COMMERCIAL QUALITY
FOR THE FOLLOWING APPLICATION: FLOOR TYPE - CARPET

INTUIT STACK CHAIR



SHELL COLOR



FRAME FINISH



SPECIFICATION DATA SHEET

PROJECT NAME: EAGLE POINTE RECREATION CENTER REMODEL AND ADDITION
PROJECT NUMBER: 1702
ITEM NUMBER: TT-1
LOCATION: 047 TECH LAB
DESCRIPTION: CURVED TRAINING TABLE
MANUFACTURER: SMITH SYSTEM
MODEL #: 04156
FINISH: LAMINATE TOP WILSONART FUSION MAPLE 7909-60, PLATINUM BASE, T-MOLD EDGE CERULEAN
DIMENSIONS: CURVED SHAPE 72" W x 24" D x 22"-34" ADJ. HT. x 1-1/4" THICK TOP
SMITH FLAT BRACKET TO CONNECT TABLES (FF&E INSTALLER TO ATTACH)
SPECIAL INSTRUCTIONS: ALL GLIDES, CASTERS, FEET, ETC. MUST BE COMMERCIAL QUALITY
FOR THE FOLLOWING APPLICATION: FLOOR TYPE - CARPET

CURVED TABLE



LAMINATE FINISH



EDGE COLOR



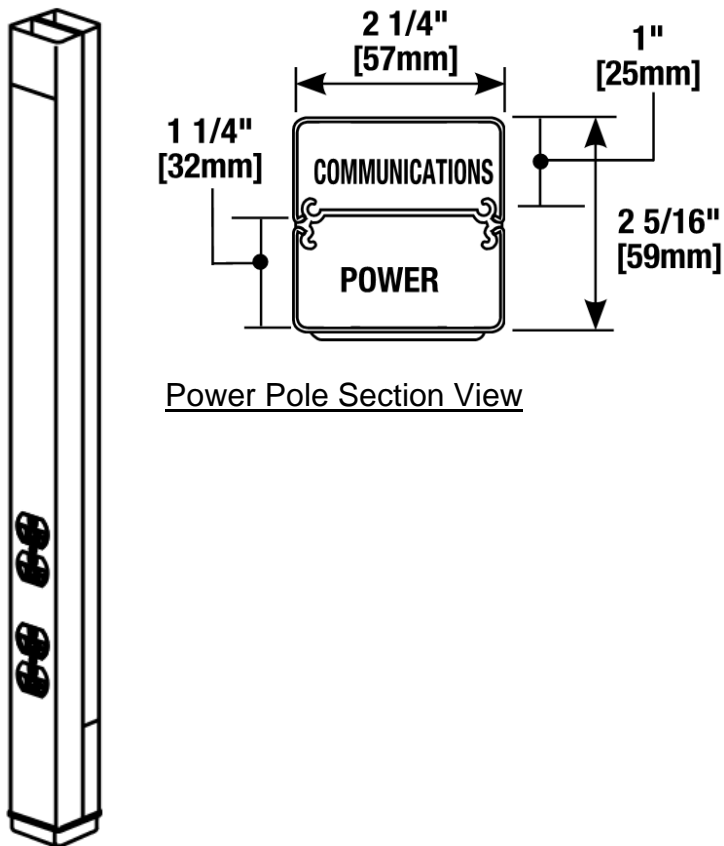
BASE FINISH



Power/IT Raceways and Cable Management

047 Tech Lab

- (3) Vertical power poles - Legrand ED420R14 Tele-Power poles, gray, approx. 2.25" x 3"
- (6) Flush mount table top power module, one each at table TT-1 - Legrand RDZNI, Nickel finish, approx. 3" x 6"
- (6) Under table raceways for computer cord management at each table TT-1 - Mockett WM22 J-shape wire manager with flange, black



Power Pole Section View

Vertical Power Poles



Flush Mount Power Modules



Under Table J-Shape Wire Manager
Raceway

SPECIFICATION DATA SHEET

PROJECT NAME: EAGLE POINTE RECREATION CENTER REMODEL AND ADDITION
PROJECT NUMBER: 1702
ITEM NUMBER: TC-6
LOCATION: 047 TECH LAB
DESCRIPTION: INTUIT ADJUSTABLE CHAIR WITH 5 STAR CASTER BASE
MANUFACTURER: SMITH SYSTEM
MODEL #: 00531
SHELL COLOR SELECTION: CLEMENTINE
FRAME FINISH: BLACK
DIMENSIONS: 25" W x 25" D x 30" - 35" ADJ. HT. x 16" - 21" ADJ. SEAT HEIGHT
SPECIAL INSTRUCTIONS: ALL GLIDES, CASTERS, FEET, ETC. MUST BE COMMERCIAL QUALITY
FOR THE FOLLOWING APPLICATION: FLOOR TYPE - CARPET

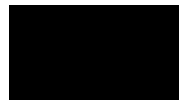
INTUIT ADJUSTABLE CHAIR



SHELL COLOR



FRAME FINISH



SPECIFICATION DATA SHEET

PROJECT NAME: EAGLE POINTE RECREATION CENTER REMODEL AND ADDITION
PROJECT NUMBER: 1702
ITEM NUMBER: TT-2
LOCATION: 047 TECH LAB
DESCRIPTION: INTERCHANGE RECTANGULAR TRAINING TABLE
MANUFACTURER: SMITH SYSTEM
MODEL #: 04109 (NO CASTERS), MANUFACTURER TO PROVIDE 2 GROMMETS PER TABLE
FINISH: LAMINATE TOP WILSONART FUSION MAPLE 7909-60, PLATINUM BASE, T-MOLD EDGE CERULEAN
DIMENSIONS: 30" W x 90" L x 34" H
SPECIAL INSTRUCTIONS: ALL GLIDES, CASTERS, FEET, ETC. MUST BE COMMERCIAL QUALITY FOR THE FOLLOWING APPLICATION: FLOOR TYPE - CARPET

RECTANGULAR TABLE



LAMINATE FINISH



EDGE COLOR



BASE FINISH



Power/IT Raceways and Cable Management

047 Tech Lab

- (4) Round grommets at table TT-2 - Mockett XG Flip Top, 3" Flush mount, 1 slot, metallic silver
- (1) Under table raceway for computer cord management at table TT-2 - Mockett WM22 J-shape wire manager w/ flange, black



3" Grommet



Under Table J-Shape Wire Manager
Raceway

SPECIFICATION DATA SHEET

PROJECT NAME: EAGLE POINTE RECREATION CENTER REMODEL AND ADDITION
PROJECT NUMBER: 1702
ITEM NUMBER: SC-2 & SC-2.1
LOCATION: 012 MULTI PURPOSE ROOM
DESCRIPTION: ARMLESS STACK CHAIR AND QUANTITY (4) DL6 DOLLY CART - STACKS 40 HIGH
MANUFACTURER: OFS
MODEL #: 412 QUICKSTACKER PLASTIC SEAT AND BACK, NO ARMS
SHELL COLOR SELECTION: BLACK
FRAME FINISH: CHROME WALL SAVER
DIMENSIONS: 19" W x 22" D x 32" H
SPECIAL INSTRUCTIONS: ALL GLIDES, CASTERS, FEET, ETC. MUST BE COMMERCIAL QUALITY
FOR THE FOLLOWING APPLICATION: FLOOR TYPE - CARPET, WOOD, RUBBER, OR LVT

SC-2 STACK CHAIR



SHELL COLOR



FRAME FINISH



SC-2.1 STACK CHAIR DOLLY



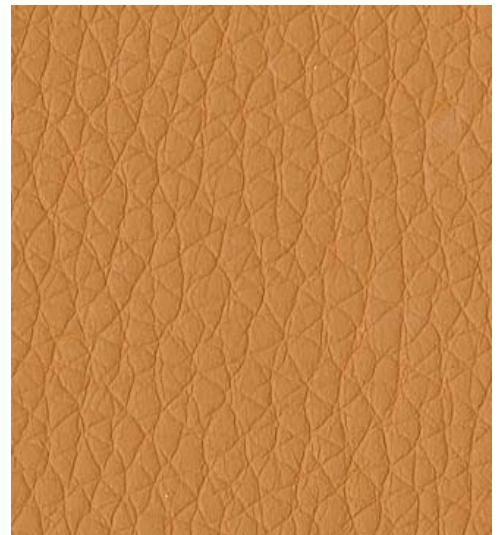
SPECIFICATION DATA SHEET

PROJECT NAME: EAGLE POINTE RECREATION CENTER REMODEL AND ADDITION
PROJECT NUMBER: 1702
ITEM NUMBER: B-1
LOCATION: 103 CARDIO AREA & 109 CORRIDOR A
DESCRIPTION: LS1016B7 LENOX STEEL SERIES 3 SEAT BENCH
MANUFACTURER: LESRO
FRAME FINISH: SILVER POWDER COAT
FABRIC SELECTION: CULP DILLON VINYL, FIESTA, 100% POLYURETHANE, ANTIMICROBIAL FINISH, 54", 200,000+ DOUBLE RUBS
YARDAGE: 2.25 YARDS PER BENCH
DIMENSIONS: 21" D x 67" W x 18.5" H
SPECIAL INSTRUCTIONS: ALL GLIDES, CASTERS, FEET, ETC. MUST BE COMMERCIAL QUALITY FOR THE FOLLOWING APPLICATION: FLOOR TYPE - RUBBER OR LVT

LESRO LENOX 3 SEAT BENCH



BENCH FABRIC
CULP DILLON



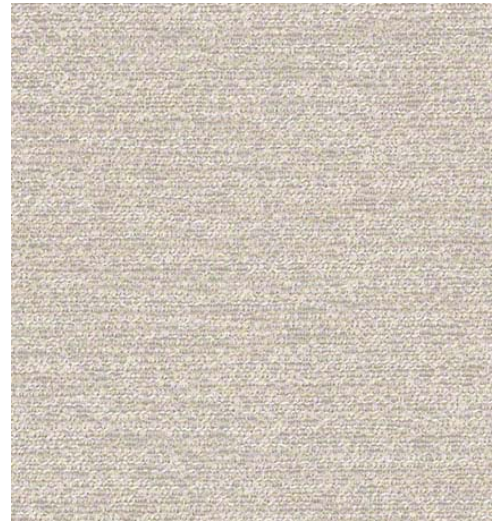
SPECIFICATION DATA SHEET

PROJECT NAME: EAGLE POINTE RECREATION CENTER REMODEL AND ADDITION
PROJECT NUMBER: 1702
ITEM NUMBER: SC-1
LOCATION: 105 LARGE GROUP EXERCISE ROOM
DESCRIPTION: OMEGA I STACK CHAIR
MANUFACTURER: MTS SEATING
MODEL #: 567 OMEGA
FRAME FINISH: M-8 QUICKSILVER
DIMENSIONS: 18" W x 22.5" D x 36.5 H
FABRIC SELECTION: STINSON MONTAGE, 63709 VAPOR, 100% POLYESTER, CRYPTON STAIN PROTECTION FINISH, 54", 100,000+ DOUBLE RUBS
YARDAGE: 0.85 YARDS PER CHAIR
SPECIAL INSTRUCTIONS: ALL GLIDES, CASTERS, FEET, ETC. MUST BE COMMERCIAL QUALITY FOR THE FOLLOWING APPLICATION: FLOOR TYPE - CARPET, WOOD, RUBBER, OR LVT

OMEGA I CHAIR



CHAIR FABRIC
STINSON MONTAGE



FRAME FINISH



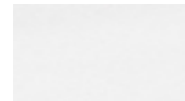
SPECIFICATION DATA SHEET

PROJECT NAME: EAGLE POINTE RECREATION CENTER REMODEL AND ADDITION
PROJECT NUMBER: 1702
ITEM NUMBER: TC-5
LOCATION: 130 LIFEGUARD ROOM
DESCRIPTION: KOOL COLLECTION TASK CHAIR, ARMLESS
MANUFACTURER: KFI
MODEL #: TK2300-P18-P08
BACK COLOR: WHITE PERFORATED POLYPROPYLENE
SEAT COLOR: BROWNSTONE POLYPROPYLENE
FRAME: SILVER POWDER COAT
BASE: 5 STAR WITH CASTERS, SILVER NYLON BASE
DIMENSIONS: 19.5" W x 18.5" D x 30.5" - 35" ADJ. HT.
SPECIAL INSTRUCTIONS: ALL GLIDES, CASTERS, FEET, ETC. MUST BE COMMERCIAL QUALITY
FOR THE FOLLOWING APPLICATION: FLOOR TYPE - CONCRETE

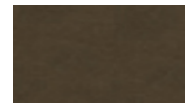
TASK CHAIR



BACK COLOR



SEAT COLOR



SPECIFICATION DATA SHEET

PROJECT NAME: EAGLE POINTE RECREATION CENTER REMODEL AND ADDITION
PROJECT NUMBER: 1702
ITEM NUMBER: PC-2
LOCATION: 130 LIFEGUARD ROOM
DESCRIPTION: VIVA SIDE CHAIR
MANUFACTURER: GROSFILLEX
MODEL #: US928721
SHELL COLOR SELECTION: SAGE GREEN/CHARCOAL
DIMENSIONS: 21" W x 22" D x 35.5" H x 17" SEAT HEIGHT
SPECIAL INSTRUCTIONS: ALL GLIDES, CASTERS, FEET, ETC. MUST BE COMMERCIAL QUALITY
FOR THE FOLLOWING APPLICATION: FLOOR TYPE - CONCRETE

VIVA SIDE CHAIR



SPECIFICATION DATA SHEET

PROJECT NAME: EAGLE POINTE RECREATION CENTER REMODEL AND ADDITION
PROJECT NUMBER: 1702
ITEM NUMBER: PT-2
LOCATION: 130 LIFEGUARD ROOM
DESCRIPTION: CIABATTI 30" SQUARE TABLE
MANUFACTURER: ACERAY
MODEL #: 810
FINISH: SILVER
DIMENSIONS: 30" W x 30" D x 29" H
SPECIAL INSTRUCTIONS: ALL GLIDES, CASTERS, FEET, ETC. MUST BE COMMERCIAL QUALITY
FOR THE FOLLOWING APPLICATION: FLOOR TYPE - CONCRETE

CIABATTI TABLE



FRAME FINISH



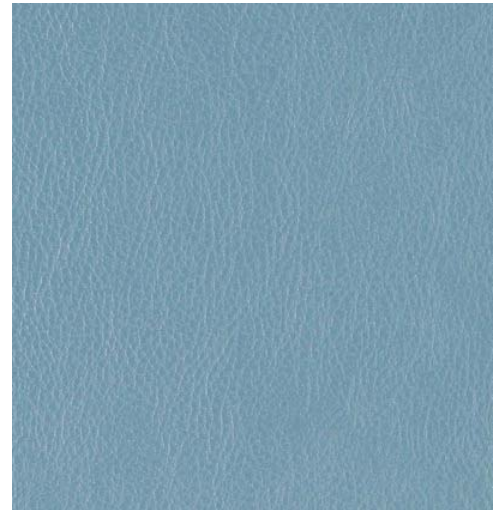
SPECIFICATION DATA SHEET

PROJECT NAME: EAGLE POINTE RECREATION CENTER REMODEL AND ADDITION
PROJECT NUMBER: 1702
ITEM NUMBER: B-2
LOCATION: JUST OUTSIDE 214 YOGA/CYCLING STUDIO
DESCRIPTION: LS1016B7 LENOX STEEL SERIES 3 SEAT BENCH
MANUFACTURER: LESRO
FRAME FINISH: SILVER POWDER COAT
FABRIC SELECTION: MAHARAM LARIAT 440401, 034 MACAW, 100% VINYL, PROTECTIVE
TOPCOAT FINISH, 54", 140,000 DOUBLE RUBS
YARDAGE: 2.25 YARDS PER BENCH
DIMENSIONS: 21" D x 67" W x 18.5" H
SPECIAL INSTRUCTIONS: ALL GLIDES, CASTERS, FEET, ETC. MUST BE COMMERCIAL QUALITY
FOR THE FOLLOWING APPLICATION: FLOOR TYPE - RUBBER

LESRO LENOX 3 SEAT BENCH



MAHARAM LARIAT UPHOLSTERY



ADD / ALTERNATE

POOL FURNITURE SELECTIONS

EAGLE POINTE RECREATION CENTER
REMODEL AND ADDITION

6060 PARKWAY DRIVE
COMMERCE CITY, CO 80022



SPECIFICATION DATA SHEET

PROJECT NAME: EAGLE POINTE RECREATION CENTER REMODEL AND ADDITION
PROJECT NUMBER: 1702
ITEM NUMBER: PB-1
LOCATION: 125 THERAPY POOL & 133 POOL
DESCRIPTION: BENCH
MANUFACTURER: TROPITONE
MODEL #: 401122
FINISH: TITANIUM
DIMENSIONS: 60" W x 18" D x 18" H
SPECIAL INSTRUCTIONS: ALL GLIDES, CASTERS, FEET, ETC. MUST BE COMMERCIAL QUALITY
FOR THE FOLLOWING APPLICATION: FLOOR TYPE - CONCRETE

BANCHETTO BENCH



FRAME FINISH



SPECIFICATION DATA SHEET

PROJECT NAME: EAGLE POINTE RECREATION CENTER REMODEL AND ADDITION

PROJECT NUMBER: 1702

ITEM NUMBER: PC-1

LOCATION: 125 THERAPY POOL, 133 POOL, & 143 PATIO

DESCRIPTION: ELANCE EZ SPAN DINING CHAIR RIBBON SEGMENT

MANUFACTURER: TROPITONE

MODEL #: 471124RB

SEAT AND BACK COLOR: JADE

FRAME FINISH: ALUMINUM METALLIC

DIMENSIONS: 26.5" W x 28" D x 34" H

SPECIAL INSTRUCTIONS:

- ALL GLIDES, CASTERS, FEET, ETC. MUST BE COMMERCIAL QUALITY FOR THE FOLLOWING APPLICATION: FLOOR TYPE - CONCRETE
- VENDOR MUST PROVIDE SAMPLE CHAIR TO CITY FOR FINAL APPROVAL, PRIOR TO CITY PURCHASING PROCESS.

ELANCE DINING CHAIR



SEAT AND BACK COLOR



FRAME FINISH



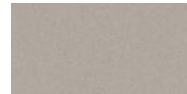
SPECIFICATION DATA SHEET

PROJECT NAME: EAGLE POINTE RECREATION CENTER REMODEL AND ADDITION
PROJECT NUMBER: 1702
ITEM NUMBER: PD-1
LOCATION: 143 PATIO
DESCRIPTION: BANCHETTO 42" SQUARE DINING TABLE
MANUFACTURER: TROPITONE
MODEL #: 401143
FINISH: TITANIUM
DIMENSIONS: 42" W x 42" D x 28" H
SPECIAL INSTRUCTIONS: ALL GLIDES, CASTERS, FEET, ETC. MUST BE COMMERCIAL QUALITY
FOR THE FOLLOWING APPLICATION: FLOOR TYPE - CONCRETE

BANCHETTO DINING TABLE



FRAME FINISH



SPECIFICATION DATA SHEET

PROJECT NAME: EAGLE POINTE RECREATION CENTER REMODEL AND ADDITION
PROJECT NUMBER: 1702
ITEM NUMBER: PL-1
LOCATION: 143 PATIO
DESCRIPTION: ELANCE EZ SPAN CHAISE LOUNGE RIBBON SEGMENT, ARMLESS
MANUFACTURER: TROPITONE
MODEL #: 471132RB
SEAT AND BACK COLOR: JADE
FRAME FINISH: ALUMINUM METALLIC
DIMENSIONS: 32" W x 79" L x 39.5" UPRIGHT H x 15" SEAT HEIGHT
SPECIAL INSTRUCTIONS: ALL GLIDES, CASTERS, FEET, ETC. MUST BE COMMERCIAL QUALITY
FOR THE FOLLOWING APPLICATION: FLOOR TYPE - CONCRETE

ELANCE CHAISE LOUNGE



SEAT AND BACK COLOR



FRAME FINISH



SPECIFICATION DATA SHEET

PROJECT NAME: EAGLE POINTE RECREATION CENTER REMODEL AND ADDITION
PROJECT NUMBER: 1702
ITEM NUMBER: PT-1
LOCATION: 125 THERAPY POOL, 133 POOL, & 143 PATIO
DESCRIPTION: 24" BANCHETTO ROUND TEA TABLE
MANUFACTURER: TROPITONE
MODEL #: 401183
FINISH: TITANIUM
DIMENSIONS: 23.5" DIA. x 18" H
SPECIAL INSTRUCTIONS: ALL GLIDES, CASTERS, FEET, ETC. MUST BE COMMERCIAL QUALITY
FOR THE FOLLOWING APPLICATION: FLOOR TYPE - CONCRETE

BANCHETTO TEA TABLE



FRAME FINISH

