

# MILE HIGH GREYHOUND PARK

ALL OF BLOCK 1 AND A PORTION OF TRACT D, RESUBDIVISION OF TOWN AND COUNTRY SUBDIVISION, AND A PORTION OF DAHLIA STREET VACATION PLAT SITUATED IN THE NORTHEAST 1/4 OF SECTION 7, TOWNSHIP 3 SOUTH, RANGE 67 WEST OF THE SIXTH PRINCIPAL MERIDIAN, CITY OF COMMERCE CITY, COUNTY OF ADAMS, STATE OF COLORADO

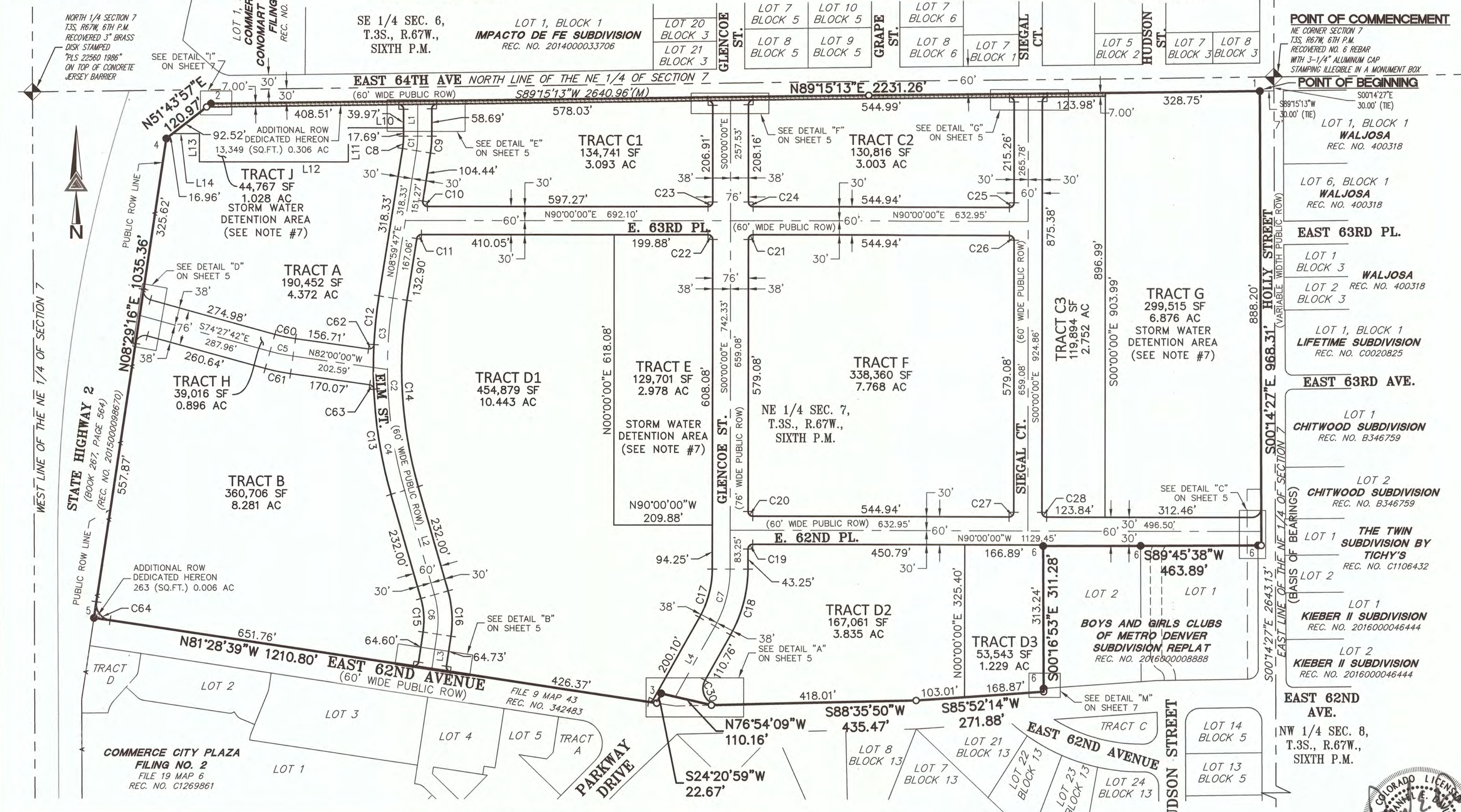
SEE SHEET 6  
FOR PROPOSED  
EASEMENTS

SEE SHEET 8  
FOR LINE &  
CURVE TABLES

SHEET 4 OF 8

MEMORY LANE  
GARDENS NO. 3  
FILE 10 MAP 56  
REC. NO. 422799

PATTIE LEA  
SECOND FILING  
FILE 10 MAP 205  
REC. NO. 486210



NORTH 1/4 SECTION 7  
T3S, R67W, 6TH P.M.  
RECOVERED 3" BRASS  
DISK STAMPED  
PLS 22560 1986"  
ON TOP OF CONCRETE  
JERSEY BARRIER



WEST LINE OF THE NE 1/4 OF SECTION 7

STATE HIGHWAY 2  
(BOOK 267, PAGE 564)  
(REC. NO. 2015000098670)

ADDITIONAL ROW  
DEDICATED HEREON  
263 (SQ.FT.) 0.006 AC

COMMERCE CITY PLAZA  
FILING NO. 2  
FILE 19 MAP 6  
REC. NO. C1269861

SE 1/4 SEC. 6,  
T.3S., R.67W.,  
SIXTH P.M.

LOT 1, BLOCK 1  
IMPACTO DE FE SUBDIVISION  
REC. NO. 2014000033706

LOT 20  
BLOCK 3  
LOT 21  
BLOCK 3  
LOT 22  
BLOCK 3

LOT 7  
BLOCK 5  
LOT 8  
BLOCK 5  
LOT 9  
BLOCK 5

LOT 7  
BLOCK 6  
LOT 8  
BLOCK 6  
LOT 7  
BLOCK 1

LOT 5  
BLOCK 2  
LOT 7  
BLOCK 3  
LOT 8  
BLOCK 3

POINT OF COMMENCEMENT  
NE CORNER SECTION 7  
T3S, R67W, 6TH P.M.  
RECOVERED NO. 6 REBAR  
WITH 3-1/4" ALUMINUM CAP  
STAMPING ILLEGIBLE IN A MONUMENT BOX

POINT OF BEGINNING  
S89°15'13"W  
30.00' (NE)

LOT 1, BLOCK 1  
WALJOSA  
REC. NO. 400318

LOT 6, BLOCK 1  
WALJOSA  
REC. NO. 400318

EAST 63RD PL.

LOT 1  
BLOCK 3  
WALJOSA

LOT 2 REC. NO. 400318  
BLOCK 3

LOT 1, BLOCK 1  
LIFETIME SUBDIVISION  
REC. NO. C0020825

EAST 63RD AVE.

LOT 1  
CHITWOOD SUBDIVISION  
REC. NO. B346759

LOT 2  
CHITWOOD SUBDIVISION  
REC. NO. B346759

LOT 1  
THE TWIN  
SUBDIVISION BY  
TICHY'S  
REC. NO. C1106432

LOT 1  
KIEBER II SUBDIVISION  
REC. NO. 2016000046444

LOT 2  
KIEBER II SUBDIVISION  
REC. NO. 2016000046444

EAST 62ND  
AVE.

NW 1/4 SEC. 8,  
T.3S., R.67W.,  
SIXTH P.M.



FOR AND ON BEHALF OF  
AZTEC CONSULTANTS, INC

## LEGEND

- ◆ FOUND SECTION CORNER AS NOTED
  - SET NO. 5 REBAR WITH 1-1/4" RED PLASTIC CAP STAMPED "AZTEC LS 38256"
  - 1 ● FOUND 3/4" BRASS TAG STAMPED "7735"
  - 2 ● FOUND NO. 5 REBAR WITH 1-1/4" YELLOW PLASTIC CAP STAMPED "23041"
  - 3 ● FOUND NO. 5 REBAR WITH 1-1/4" RED PLASTIC CAP STAMPED "37971"
  - 4 ● FOUND NO. 5 REBAR WITH 1-1/4" BLUE PLASTIC CAP STAMPED "38162"
  - 5 ● FOUND NO. 5 REBAR WITH 1-1/4" ORANGE PLASTIC CAP STAMPED "AZTEC LS 38064"
  - 6 ● FOUND NO. 5 REBAR WITH 1-1/4" YELLOW PLASTIC CAP STAMPED "29430"
- ROW RIGHT-OF-WAY
- ADDITIONAL RIGHT-OF-WAY DEDICATED BY THIS PLAT CONTAINS TOTAL OF 13,612 SQ.FT., 0.312 ACRES MORE OR LESS
- ACCESS CONTROL LINE BOOK 286, PAGE 198

RESUBDIVISION OF  
TOWN AND COUNTRY  
SUBDIVISION  
FILE 9 MAP 43  
REC. NO. 342483

EAST 1/4 CORNER SECTION 7  
T3S, R67W, 6TH P.M.  
RECOVERED 3-1/4"  
ALUMINUM CAP  
STAMPING ILLEGIBLE IN  
A MONUMENT BOX

SCALE: 1" = 150'



AzTec Proj. No.: 48119-14  
300 East Mineral Ave., Suite 1  
Littleton, Colorado 80122  
Phone: (303) 713-1898  
Fax: (303) 713-1897  
www.aztecconsultants.com  
Drawn By: BAM

DATE OF PREPARATION:	07-25-2019
SCALE:	1" = 150'
SHEET 4 OF 8	