

REUNION COMMERCIAL CENTER

FILING 1 - P.U.D. PERMIT

LOCATED IN THE NORTHWEST QUARTER OF SECTION 15, TOWNSHIP 2 SOUTH, RANGE 66 WEST OF THE 6TH PRINCIPAL MERIDIAN
CITY OF COMMERCE CITY, COUNTY OF ADAMS, STATE OF COLORADO

REUNION COMMERCIAL
CENTER FILING 1



REUNION COMMERCIAL
CENTER - FILING 1
PUD PERMIT

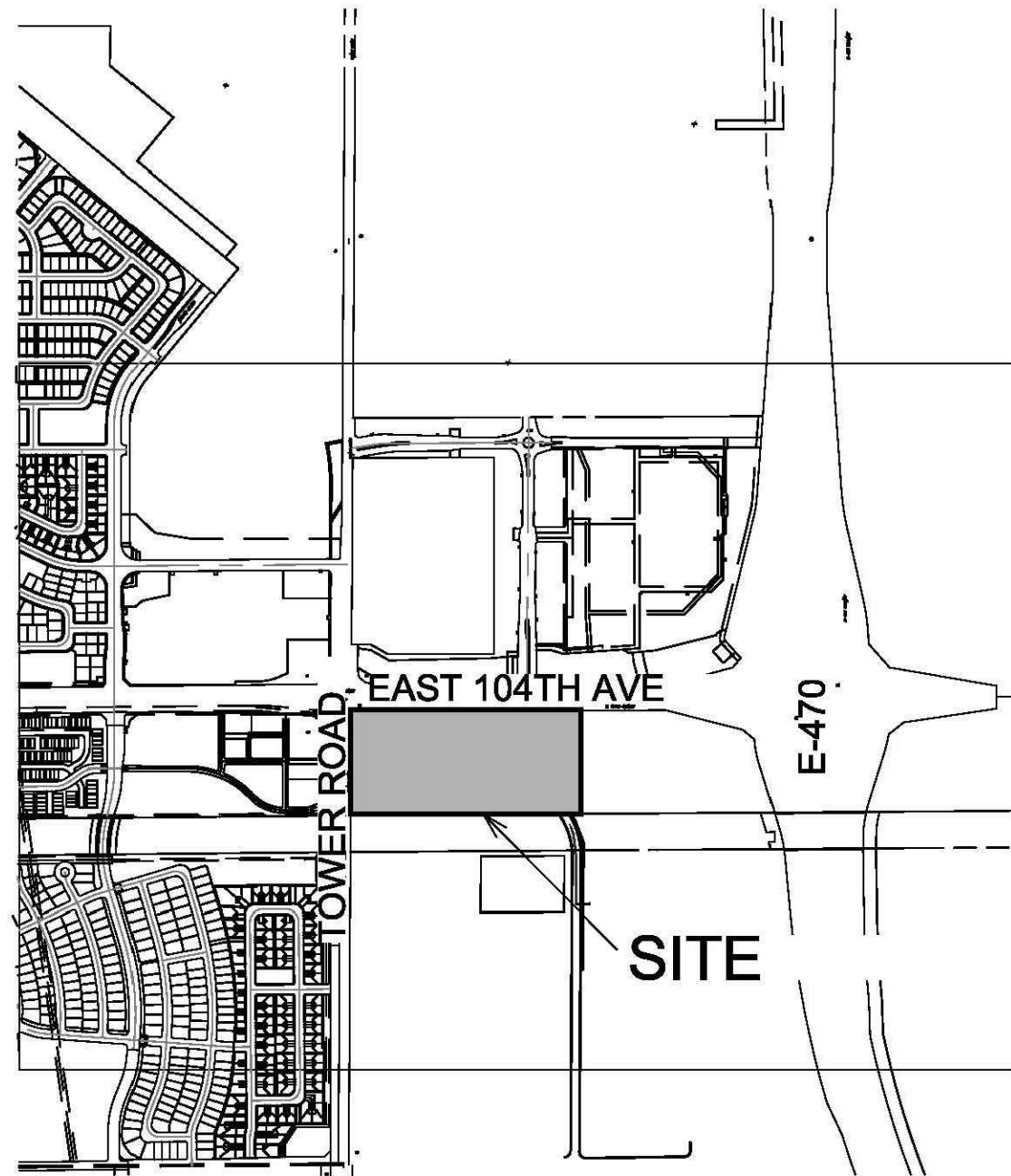
COVER SHEET

SAGE DESIGN GROUP
1500 South Pearl St., Suite 200
Denver, Colorado 80210
303.470.2855 (p) 303.470.2894 (f)

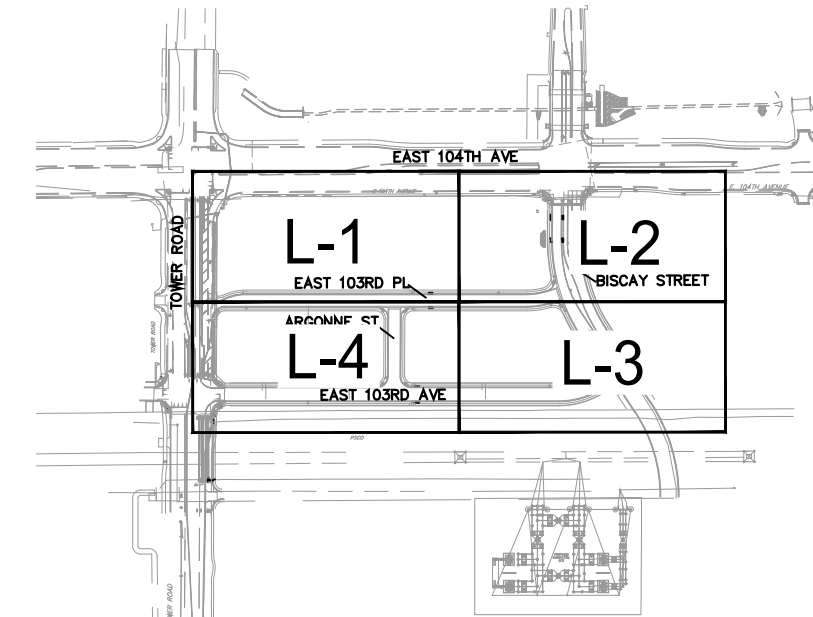


DATE: 10/19/21

COV



VICINITY MAP



KEY MAP



NORTH

SHEET INDEX

COV	COVER SHEET
L-0	CONNECTIVITY PLAN
L-1	LANDSCAPE PLAN
L-2	LANDSCAPE PLAN
L-3	LANDSCAPE PLAN
L-4	LANDSCAPE PLAN
L-5	LANDSCAPE DETAILS
L-6	LANDSCAPE NOTES

SIGNATURES

CITY STAFF CERTIFICATE

APPROVED BY THE DEPARTMENT OF COMMUNITY DEVELOPMENT OF THE CITY OF COMMERCE CITY, THIS _____ DAY OF _____, A.D. 20__.

BY: _____
DEPARTMENT OF COMMUNITY DEVELOPMENT

LANDSCAPE ARCHITECT

SAGE DESIGN GROUP
1500 SOUTH PEARL STREET #200
DENVER, COLORADO 80210
(303) 470-2855 ext 1005
CONTACT: KENT MARTIN
KENT@SAGEDESIGNGROUP.COM

DATES

PUD PERMIT	06/15/2021
PUD PERMIT- 2ND SUBMITTAL	10/19/2021

LANDSCAPE TREATMENT AREA TABLE

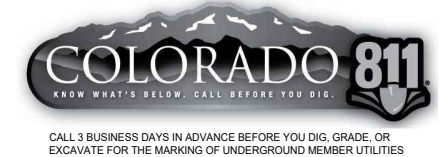
TOTAL LANDSCAPE AREA (TRACTS E,F)	21,414 SF	0.49 AC	NOTES
TOTAL LANDSCAPE IN SOD	2,827 SF	0.06 AC	13.2% OF TOTAL LANDSCAPE AREA (50% ALLOWED)
TOTAL LANDSCAPE IN LIVING PLANTS	21,033 SF	0.48 AC	98% OF TOTAL LANDSCAPE AREA (75% MINIMUM)
# OF TREES REQ'D TABLE VII-14	18		1 FOR EVERY 1,200 SF 21,414/1200 = 18
# OF TREES PROVIDED	18		
# OF SHRUBS REQ'D TABLE VII-13	72		1 FOR EVERY 300 SF 21,414/300 = 72
# OF SHRUBS PROVIDED	72		
# OF MULCHES REQ'D TABLE VII-13	2		
# OF MULCHES PROVIDED	2		-1 1/2"-2" RIVER ROCK -8"-12" LARGE COBBLE

RIGHT-OF-WAY LANDSCAPE AREA TABLE

TOTAL R.O.W. LANDSCAPE AREA	17,378 SF	0.40 AC	NOTES
# OF TREES REQ'D TABLE VII-13, SEC. 21-7550	64		30-40' O.C.
# OF TREES PROVIDED	64		

DETENTION LANDSCAPE AREA TABLE

TOTAL LANDSCAPE AREA (TRACT G)	23,238 SF	0.53 AC	NOTES
# OF TREES REQ'D SEC. 21-7530	10		464 L.F. PERIMETER 464/50 = 9.3
# OF TREES PROVIDED	10		
# OF SHRUBS REQ'D SEC. 21-7530	93		464/50 = 9.3 * 10 = 93
# OF SHRUBS PROVIDED	95		



CALL 3 BUSINESS DAYS IN ADVANCE BEFORE YOU DIG, GRADE, OR EXCAVATE FOR THE MARKING OF UNDERGROUND MEMBER UTILITIES

TRAILS AND SIDEWALKS

- ARTERIAL- 6' WALK
- MAJOR COLLECTOR- 5' WALK
- LOCAL COMMERCIAL- 5' WALK
- MINOR COLLECTOR- 5' WALK
- MULTI-USE TRAIL - 12' WALK
- PROPOSED PRIVATE SIDEWALK 5'

BICYCLE LANES

- COLLECTOR STREETS - 7'

REUNION COMMERCIAL CENTER

FILING 1 - P.U.D. PERMIT

LOCATED IN THE NORTHWEST QUARTER OF SECTION 15, TOWNSHIP 2 SOUTH, RANGE 66 WEST OF THE 6TH PRINCIPAL MERIDIAN
CITY OF COMMERCE CITY, COUNTY OF ADAMS, STATE OF COLORADO

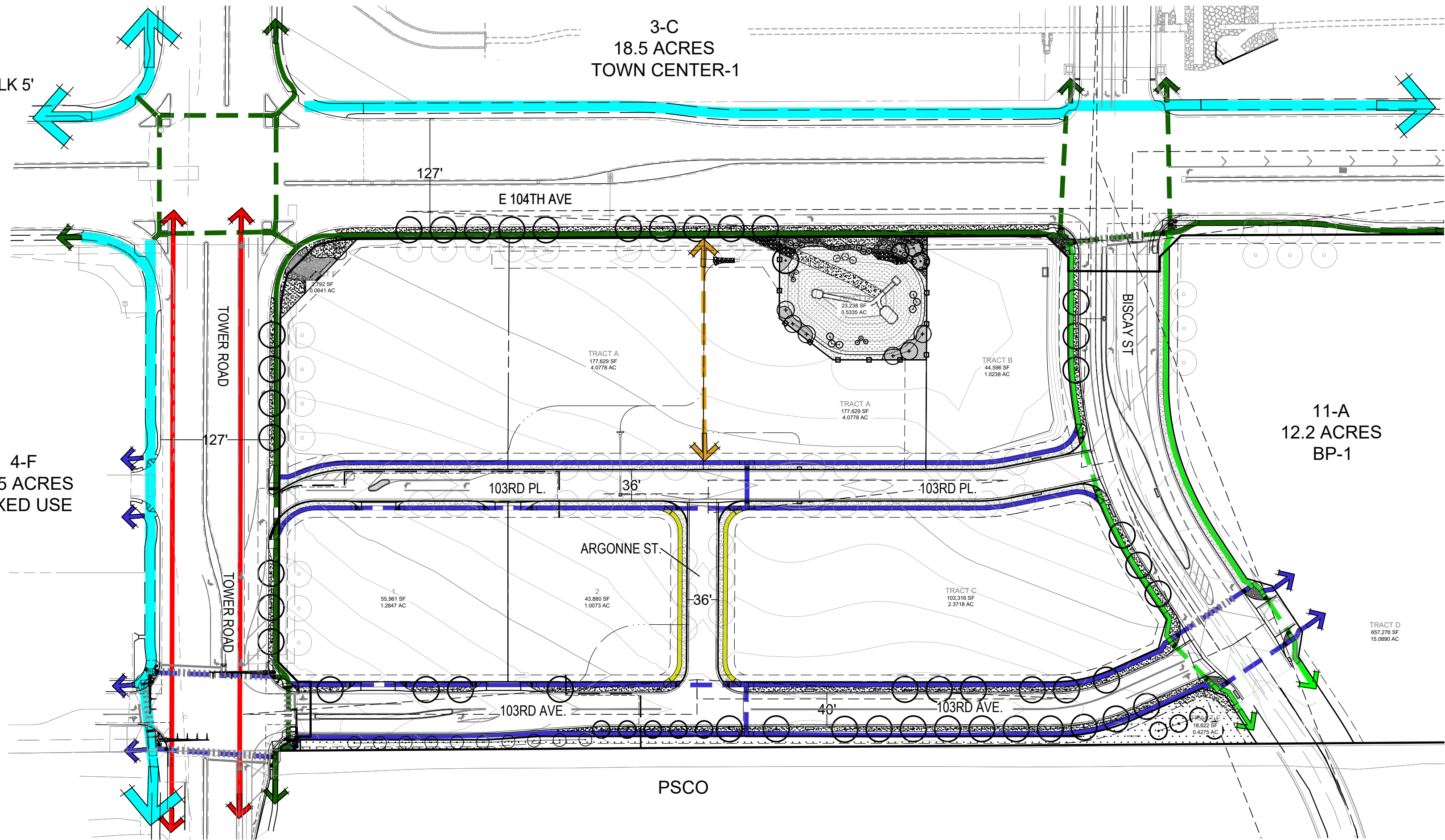
REUNION COMMERCIAL CENTER FILING 1



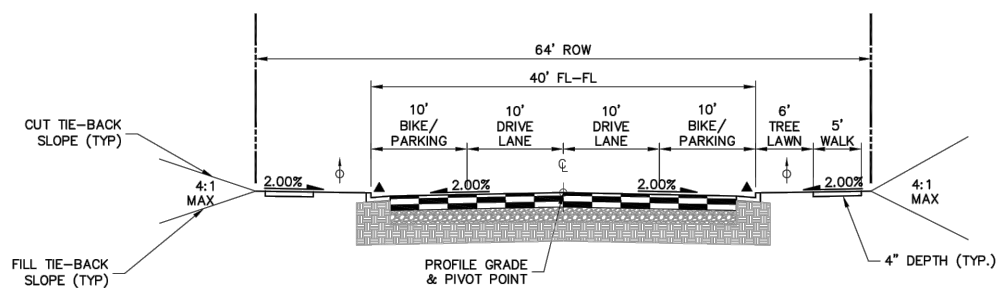
REUNION COMMERCIAL CENTER - FILING 1
PUD PERMIT

CONNECTIVITY PLAN

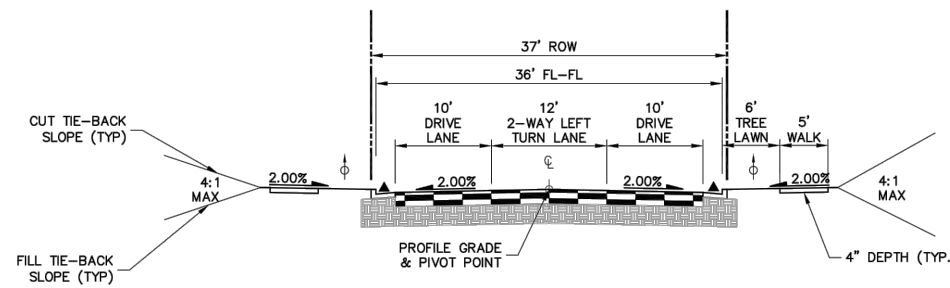
SAGE DESIGN GROUP
1500 South Pearl St., Suite 200
Denver, Colorado 80210
303.470.2855 (P) 303.470.2894 (F)



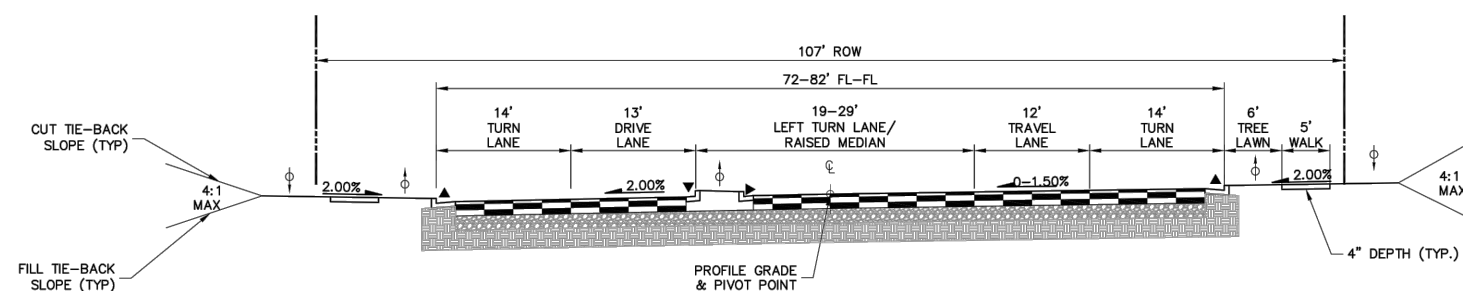
MINOR COLLECTOR



LOCAL COMMERCIAL



MAJOR COLLECTOR



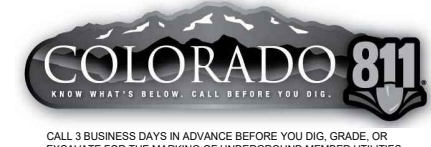
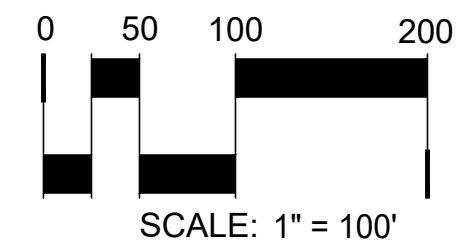
PROPOSED BISCAY STREET TYPICAL CROSS SECTION
STA. 10+91.70 TO STA. 14+25.00
LOOKING NORTH

SIGNATURES

CITY STAFF CERTIFICATE

APPROVED BY THE DEPARTMENT OF COMMUNITY DEVELOPMENT OF THE CITY OF COMMERCE CITY, THIS _____ DAY OF _____, A.D. 20__.

BY: _____
DEPARTMENT OF COMMUNITY DEVELOPMENT



DATE: 10/19/21

L-0

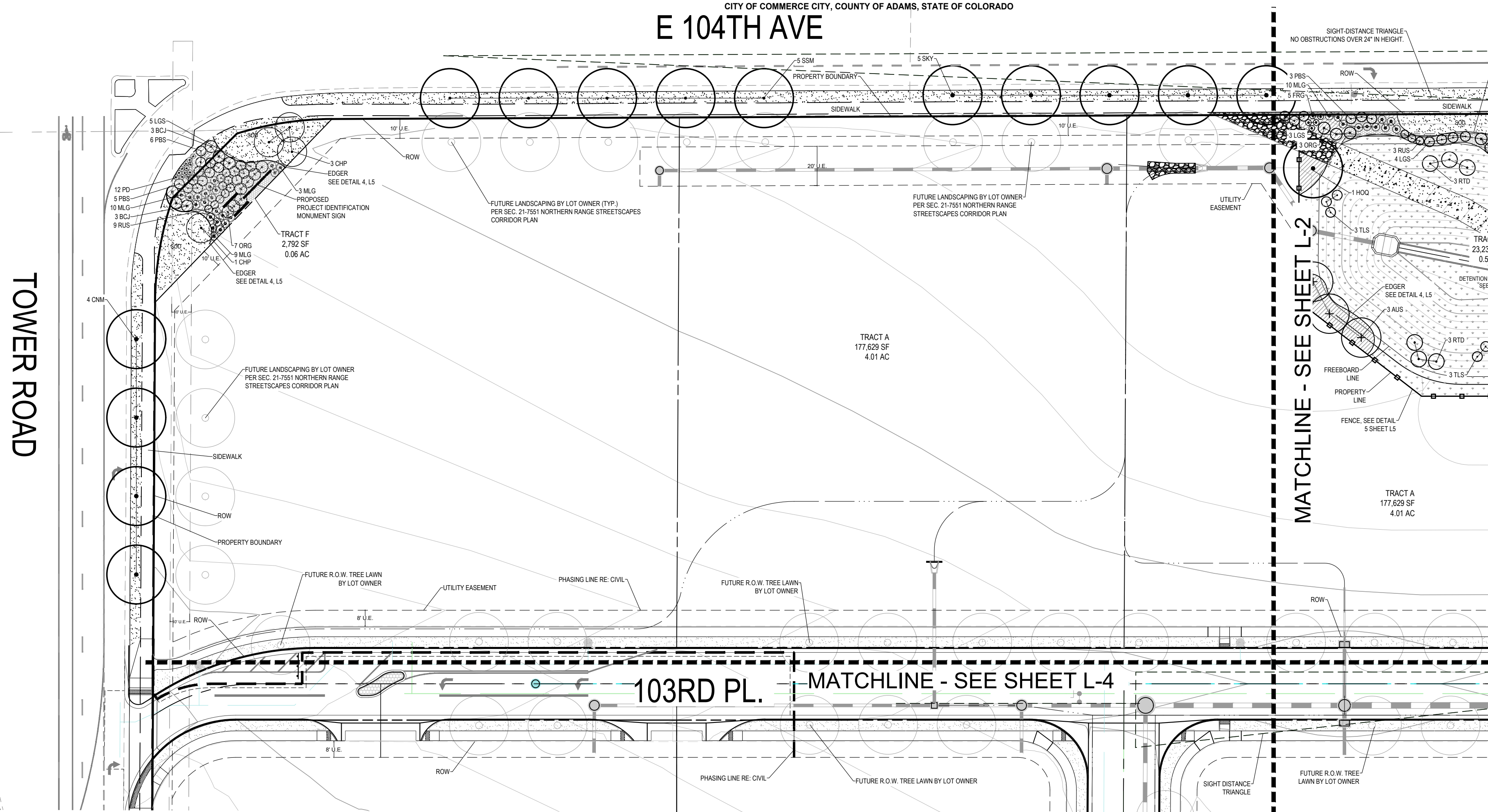
REUNION COMMERCIAL CENTER

FILING 1 - P.U.D. PERMIT

LOCATED IN THE NORTHWEST QUARTER OF SECTION 15, TOWNSHIP 2 SOUTH, RANGE 66 WEST OF THE 6TH PRINCIPAL MERIDIAN

CITY OF COMMERCE CITY, COUNTY OF ADAMS, STATE OF COLORADO

E 104TH AVE

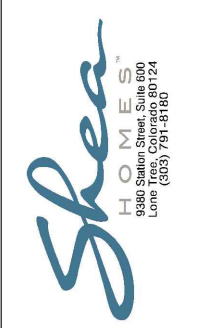


TOWER ROAD

MATCHLINE - SEE SHEET L-2

MATCHLINE - SEE SHEET L-4

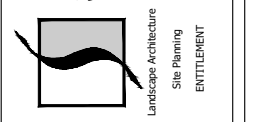
REUNION COMMERCIAL CENTER FILING 1



REUNION COMMERCIAL CENTER - FILING 1 PUD PERMIT

LANDSCAPE PLAN

SAGE DESIGN GROUP
1500 South Pearl St., Suite 200
Denver, Colorado 80202
303.470.2855 (P) 303.470.2884 (F)



DATE: 10/19/21

L-1

LANDSCAPE PLANT LIST

SYMBOL	COMMON NAME	BOTANICAL NAME	SIZE & CONDITION	QUANTITY
DECIDUOUS STREET TREES				
CMH	COLUMBIAN NORWAY MAPLE	ACER PLATANOIDES 'COLUMBIAN'	2" CAL. B&B	4
HOO	HERITAGE OAK	QUERCUS X MACDONALDIA 'CLARENCE'	2" CAL. B&B	7
COO	CHINA PINE OAK	QUERCUS MUEHLBENBERGII	2" CAL. B&B	7
HEP	PRAIRIE PRIDE HACKBERRY	CELTIS OCCIDENTALIS 'PRAIRIE PRIDE'	2" CAL. B&B	8
SSM	STATE STREET MAPLE	ACER NYRAE 'NORTON'	2" CAL. B&B	8
SPY	SPYRICE HONEYLOCUST	GLEDITSIA TRICANTHOS 'SPYGLASS'	2" CAL. B&B	11
SHM	SHADEMASTER HONEYLOCUST	GLEDITSIA TRICANTHOS 'PH 2033'	2" CAL. B&B	3
TOTAL				42
EVERGREEN TREES				
AUS	AUSTRIAN PINE	PINUS NIGRA	6" B & B	6
TOTAL				6
DECIDUOUS ORNAMENTAL TREES				
CHP	CHWITKLEER PEAR	PIRUS CALLERYANA 'VARSTOCAT'	1 1/2" CAL. B&B	4
DBT	DOLBYNWAY TREE	HOESHERBIA PANICOLATA	1 1/2" CAL. B&B	12
TST	TATARSKA MAPLE PATTERN PERFECT	ACER TATARSKOUM PATTERN PERFECT	1 1/2" CAL. B&B	19
TOTAL				16
DECIDUOUS SHRUBS				
RUS	RUSSIAN SAGE	PEROVSKIA ATRIPICIFOLIA	5 GAL.	23
TLS	THREELFOLD SAGE	BRUNNIA TRILOBATA	5 GAL.	8
LGS	LOW GROUND SAGE	PHYS. TRILOBATA 'GROWN LOW'	5 GAL.	21
PBS	PANINKE BUTTES SAND CHERRY	PRUNUS BESSEYI 'PANINKE BUTTES'	5 GAL.	19
RTD	RED TWIG DOGWOOD	CORNUS SERICEA	5 GAL.	9
TOTAL				78
EVERGREEN AND BROADLEAF SHRUBS				
ONG	OREGON GRAPES	MAHONIA AQUIFOLIUM	5 GAL.	19
BCJ	BLUE CHIP JUNIPER	JUNIPERUS HORIZONTALIS 'BLUE CHIP'	5 GAL.	6
TOTAL				25
ORNAMENTAL GRASSES				
FRG	FEATHERED REED GRASS	CALAMAGROSTIS X ACUTIFLORA 'VARL FORSTER'	1 GAL.	8
PD	PRAIRIE DROPSEED	SPOROKALUS HETEROLEPIS	1 GAL.	24
MLG	MISCANTHUS	MISCANTHUS SINENSIS	1 GAL.	32
TOTAL				64

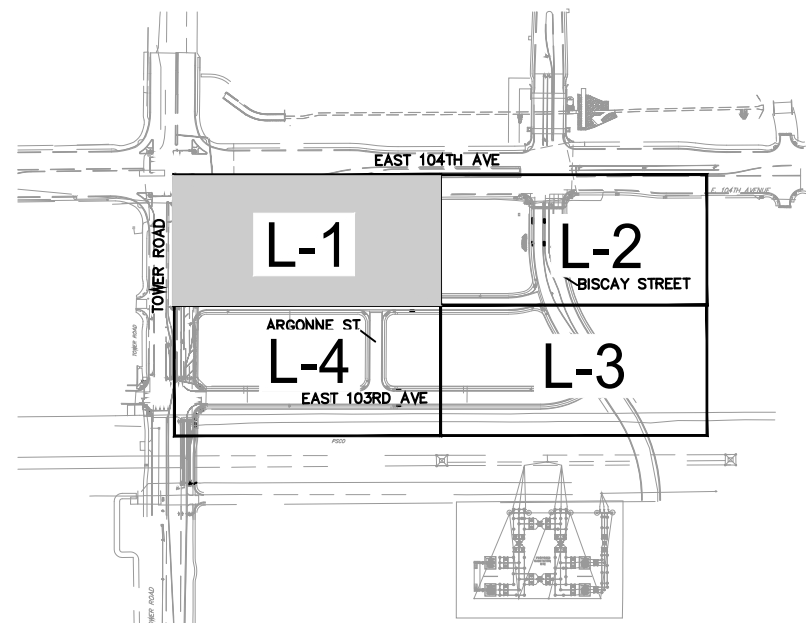
	SOD (All sod areas to be fully irrigated with an automatic irrigation system)	COLORADO BLACK BEAUTY FESCUE GRAFF'S TURF FARM, LOCAL PER. BRAND. NO SUBSTITUTION ALLOWED. APPROVED BY REUNION METRO DISTRICT	21,000 SF
	NATIVE SEED DETENTION POND MIX	BROADCAST RATE: 8.5 LBS PLS PER 1000 SQ. FT. SPECIES: SEEDS AND RUBES	15,500 SF
	NATIVE SEED TALL GRASS SECOND MIX	BROADCAST RATE: 8.5 LBS PLS PER 1000 SQ. FT. SPECIES: SEEDS AND RUBES	18,100 SF
	MULCH	RIVER ROCK 1.5 TO 2" TAN COLORED WASHED ROCK (OVER 50% AIRRAPI) WEED BARRIER FABRIC LOCATE PER PLANS	3" DEPTH 3,000 SF
	MULCH	DOUBLE ROCK 1" TO 1 1/2" TAN COBBLE, SMOOTH RIVER ROCK OVER 50% AIRRAPI WEED BARRIER FABRIC LOCATE PER PLANS	10" DEPTH 2,000 SF

NOTE: SOD, NATIVE SEED AND SHRUB BEDS TOTALS ARE FOR CONTRACTOR CONVENIENCE ONLY. WHERE CONFLICT OCCURS, THE AREAS/QUANTITIES SHOWN ON THE PLAN SHALL PREVAIL.

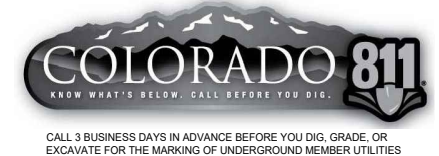
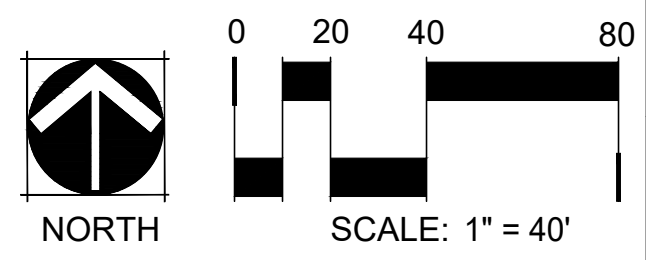
SIGNATURES CITY STAFF CERTIFICATE

APPROVED BY THE DEPARTMENT OF COMMUNITY DEVELOPMENT OF THE CITY OF COMMERCE CITY, THIS _____ DAY OF _____, A.D. 20__.

BY: _____
DEPARTMENT OF COMMUNITY DEVELOPMENT



KEY MAP
N.T.S.



REUNION COMMERCIAL CENTER

FILING 1 - P.U.D. PERMIT

LOCATED IN THE NORTHWEST QUARTER OF SECTION 15, TOWNSHIP 2 SOUTH, RANGE 66 WEST OF THE 6TH PRINCIPAL MERIDIAN
CITY OF COMMERCE CITY, COUNTY OF ADAMS, STATE OF COLORADO

REUNION COMMERCIAL CENTER FILING 1

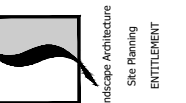


REUNION COMMERCIAL CENTER - FILING 1
PUD PERMIT

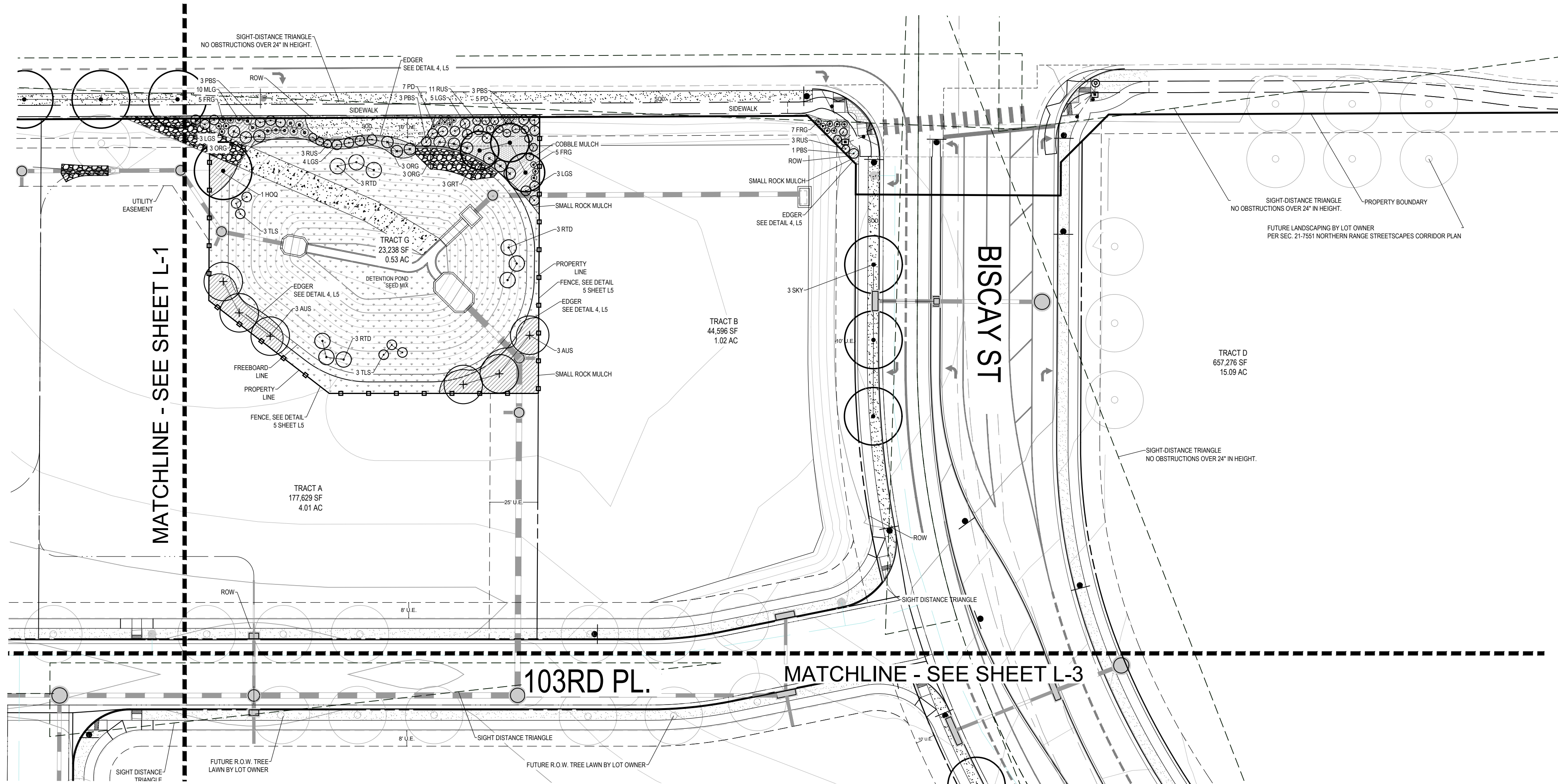
LANDSCAPE PLAN

SAGE DESIGN GROUP

1500 South Pearl St., Suite 200
Denver, Colorado 80210
303.470.2855 (P) 303.470.2894 (F)

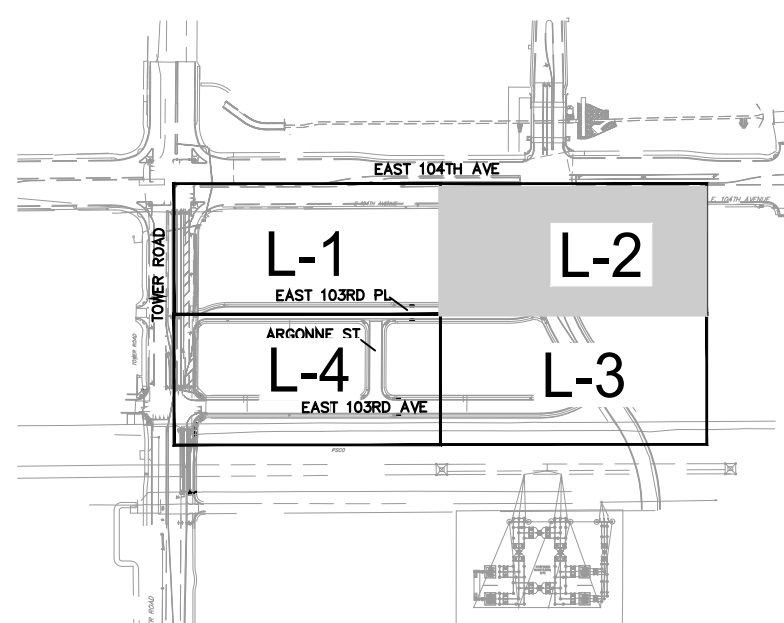


LANDSCAPE ARCHITECTURE
Site Planning
ENTIREMENT



SYMBOL	COMMON NAME	BOTANICAL NAME	SIZE & CONDITION	QUANTITY
DECIDUOUS STREET TREES				
CNM	COLUMBIAN NORWAY MAPLE	ACER PLATANOIDES 'COLLIMANAR'	2" CAL BAB	4
HOO	HERITAGE OAK	QUERCUS X MAZDANIELA 'CLEMONS'	2" CAL BAB	7
QND	QUERCUS NIGRA	QUERCUS NIGRA	2" CAL BAB	7
HYB	HYBRID PRINCE PRIDE HACKBERRY	CETUS OCCIDENTALIS PRINCE PRIDE	2" CAL BAB	6
SSM	STATE STREET MAPLE	ACER NYMBAE 'MORTON'	2" CAL BAB	8
SKY	SKYLINE HONEYLOCUST	CELESTIS TRANQUILLUS 'SKYLINE'	2" CAL BAB	11
SSM	SPRINGMEADOW HONEYLOCUST	CELESTIS TRANQUILLUS 'SPR 2002'	2" CAL BAB	3
				SUBTOTAL
				42
EVERGREEN TREES				
AUS	AUSTRIAN PINE	PINUS NIGRA	6" B & B	6
				SUBTOTAL
				6
DECIDUOUS ORNAMENTAL TREES				
CHP	CHANTICLEER PEAR	PIRUS CALLERIANA 'ARISTOCRA'	1 1/2" CAL BAB	4
GRT	GOLDEN RAIN TREE	KOELERUTERA PANICULATA	1 1/2" CAL BAB	12
TAT	TATARSKA MAPLE PATTERN PERFECT	ACER TATARICUM PATTERN PERFECT	1 1/2" CAL BAB	10
				SUBTOTAL
				16
DECIDUOUS SHRUBS				
RUS	RUSSIAN SAGE	PEROVSKIA AETIOLOFOIA	5 GAL	23
TLB	THREELFOLD SUMAC	RHUS TRILOBATA	5 GAL	6
LSB	LOW SPREAD SUMAC	RHUS TRILOBATA 'LOW SPREAD'	5 GAL	21
PBS	PRINCE PRIDE SAND CHERRY	PRUNUS BISSERI 'PRINCE PRIDE'	5 GAL	19
RTD	RED TINDO DOGWOOD	CORNUS SERICEA	5 GAL	9
				SUBTOTAL
				78
EVERGREEN AND BROADLEAF SHRUBS				
GRG	GRASSY GARDEN	MANISIA AQUILOIDA	5 GAL	19
BCJ	BLUE CHIP JASMINE	JASMINE 'BLUE CHIP'	5 GAL	6
				SUBTOTAL
				25
ORNAMENTAL GRASSES				
FRG	FEATHERED REED GRASS	CALAMAGROSTIS X ACUTIFLORA 'NARL'	1 GAL	8
AD	ANDROMEDA	SPONDIOPUS 'ANDROMEDA'	1 GAL	24
MLG	MOUNTAIN LARKSPUR	MECONOPSIS 'MOUNTAIN LARKSPUR'	1 GAL	32
				SUBTOTAL
				64

SYMBOL	COMMON NAME	DETAILS	QUANTITY
SOD			
SOD	COLORADO BLACK BEAUTY FESCUE	GRASS TYP FASCUE, LOCKE P&S	21,000 SF
NATIVE SEED			
NATIVE SEED - DETENTION POND MIX	BROADCAST RATE IS 3 LBS PLS	SPECIES: GRASS, SEDGES AND RUBUS	15,000 SF
NATIVE SEED - TALL GRASS SEEDING MIX	BROADCAST RATE IS 3 LBS PLS PURE LIVE SEEDS	SPECIES: NEITZSCHIA, WHEATGRASS, WHEAT OR NATIVE	18,000 SF
MULCH			
RIVER ROCK MULCH	1.5 TO 2" TAN COLORED WASHED ROCK OVER 80% WEED BARRIER FABRIC	3" DEPTH	3,500 SF
COBBLE ROCK MULCH	1" TO 1 1/2" TAN COBBLE, SMOOTH RIVER ROCK OVER 80% WEED BARRIER FABRIC	10" DEPTH	2,000 SF

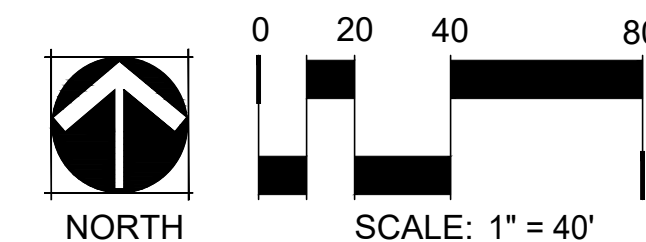


SIGNATURES

CITY STAFF CERTIFICATE

APPROVED BY THE DEPARTMENT OF COMMUNITY DEVELOPMENT OF THE CITY OF COMMERCE CITY, THIS _____ DAY OF _____, A.D. 20__.

BY: _____
DEPARTMENT OF COMMUNITY DEVELOPMENT



DATE: 10/19/21

L-2



CALL 3 BUSINESS DAYS IN ADVANCE BEFORE YOU DIG, GRADE, OR EXCAVATE FOR THE MARKING OF UNDERGROUND MEMBER UTILITIES

REUNION COMMERCIAL CENTER

FILING 1 - P.U.D. PERMIT

LOCATED IN THE NORTHWEST QUARTER OF SECTION 15, TOWNSHIP 2 SOUTH, RANGE 66 WEST OF THE 6TH PRINCIPAL MERIDIAN
CITY OF COMMERCE CITY, COUNTY OF ADAMS, STATE OF COLORADO

REUNION COMMERCIAL
CENTER FILING 1



REUNION COMMERCIAL
CENTER - FILING 1
PUD PERMIT

LANDSCAPE PLAN

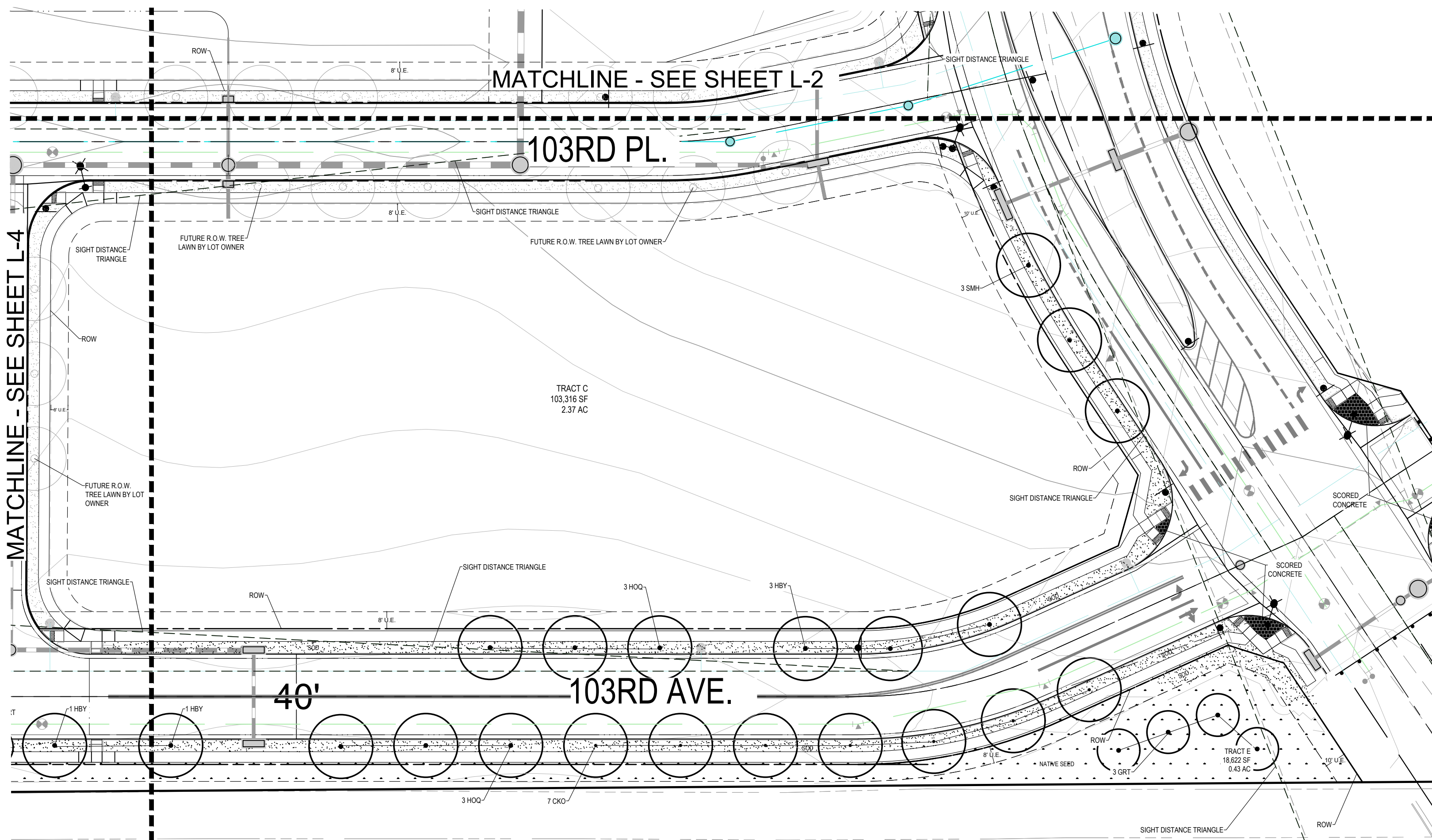
SAGE DESIGN GROUP

1500 South Pearl St., Suite 200
Denver, Colorado 80210
303.470.2855 (P) 303.470.2894 (F)



DATE: 10/19/21

L-3



LANDSCAPE PLANT LIST

SYMBOL	COMMON NAME	BOTANICAL NAME	SIZE & CONDITION	QUANTITY
DECIDUOUS STREET TREES				
CMF	COLUMBIAN NORWAY MAPLE	ACER PLATANOIDES 'COLUMBIAN'	2" CAL. BAB	4
HOQ	HERITAGE OAK	QUERCUS X MACZANAEI 'CLEMONS'	2" CAL. BAB	7
COO	CHERRY OAK	QUERCUS MUEhlenBERGERI	2" CAL. BAB	7
HBY	PRAIRIE PRIDE HACKBERRY	CELTIS OCCIDENTALIS 'PRAIRIE PRIDE'	2" CAL. BAB	6
SSM	STATE STREET MAPLE	ACER NYRABE 'MORTON'	2" CAL. BAB	8
SMH	SMOOTH HORN LOCKSET	GLADIOLUS THUNBERGII 'SHOCKLE'	2" CAL. BAB	11
SFM	SPRINGWATER HONEYLOCUST	GLADIOLUS THUNBERGII 'TNY 200'	2" CAL. BAB	3
			SUBTOTAL:	42
EVERGREEN TREES				
AUS	AUSTRIAN FIR	FRAXUS NYRABE	6" B.B.B	6
			SUBTOTAL:	6
DECIDUOUS ORNAMENTAL TREES				
CHP	CHANTICLEER PEAR	PIRUS CALLERYANA 'ARISTOCRAT'	1 1/2" CAL. BAB	4
GRT	GOLDEN RAIN TREE	KOELREUTERIA PANICULATA	1 1/2" CAL. BAB	12
TAT	TATARIAN MAPLE PATTERN PERFECT	ACER TATARICUM 'PATTERN PERFECT'	1 1/2" CAL. BAB	10
			SUBTOTAL:	16
DECIDUOUS SHRUBS				
BUS	BUSBARK SAGE	PEROVSKIA AETIOLOPODIA	3 GAL.	23
TLB	THRELLAP SUMAC	RHUS TRILOBATA	3 GAL.	6
LSB	LOW GROWING SUMAC	RHUS TRILOBATA 'LOW GROW'	3 GAL.	21
FRB	FRANKEE BUTTES SAND CHERRY	PRUNUS BESSYI 'FRANKEE BUTTES'	3 GAL.	19
RED	RED THRU DOGWOOD	CORNUS SERICEA	3 GAL.	9
			SUBTOTAL:	78
EVERGREEN AND BROADLEAF SHRUBS				
GRS	GRASSY GRASS	MANISSEA ADZUWOLAM	3 GAL.	19
BCJ	BLUE CHIP JASMINE	JASPERUS HORIZONTALIS 'BLUE CHIP'	3 GAL.	6
			SUBTOTAL:	25
ORNAMENTAL GRASSES				
FRG	FEATHERED REED GRASS	COLUMBINOSTIS X KOUTIFLORA 'NAEL CERSTER'	1 GAL.	8
FD	FRANKEE DOGWOOD	SPERBERGIIUS METEORICUS	1 GAL.	24
MLG	MISCANTHUS	MISCANTHUS SPENSIS	1 GAL.	32
			SUBTOTAL:	64

SOD

SOD * COLORADO BACK BEAUTY FESCUE
GROWER'S TRIP FURNISH LOCATE PER PLAN. NO SUBSTITUTIONS UNLESS APPROVED BY REUNION MERITO DISTRICT

INITIAL PER GRASSERS INSTRUCTIONS: 21,000 SF

NATIVE SEED

NATIVE SEED BROADCAST RATE IS 8 LBS PLS SPECIES CONTRACTOR SHALL APPLY NATIVE SEED AND
DETENTION POND MIX LBS/ACRAC GRASSES, SEDGES AND RUSHES 15,000 SF EST. allow mulch by mechanical drilling.

NATIVE SEED TALL BROADCAST RATE IS 37 LBS PLS PURE SPECIES CONTRACTOR SHALL APPLY NATIVE SEED AND
GRASS SEEDING MIX LIVE SEEDS/LBS/ACRAC WESTERN WHEATGRASS 'AMBA' OR NATIVE 19,100 SF EST. allow mulch by mechanical drilling.

NATIVE SEED TALL BROADCAST RATE IS 37 LBS PLS PURE SPECIES CONTRACTOR SHALL APPLY NATIVE SEED AND
GRASS SEEDING MIX LIVE SEEDS/LBS/ACRAC WESTERN WHEATGRASS 'AMBA' OR NATIVE 19,100 SF EST. allow mulch by mechanical drilling.

NATIVE SEED TALL BROADCAST RATE IS 37 LBS PLS PURE SPECIES CONTRACTOR SHALL APPLY NATIVE SEED AND
GRASS SEEDING MIX LIVE SEEDS/LBS/ACRAC WESTERN WHEATGRASS 'AMBA' OR NATIVE 19,100 SF EST. allow mulch by mechanical drilling.

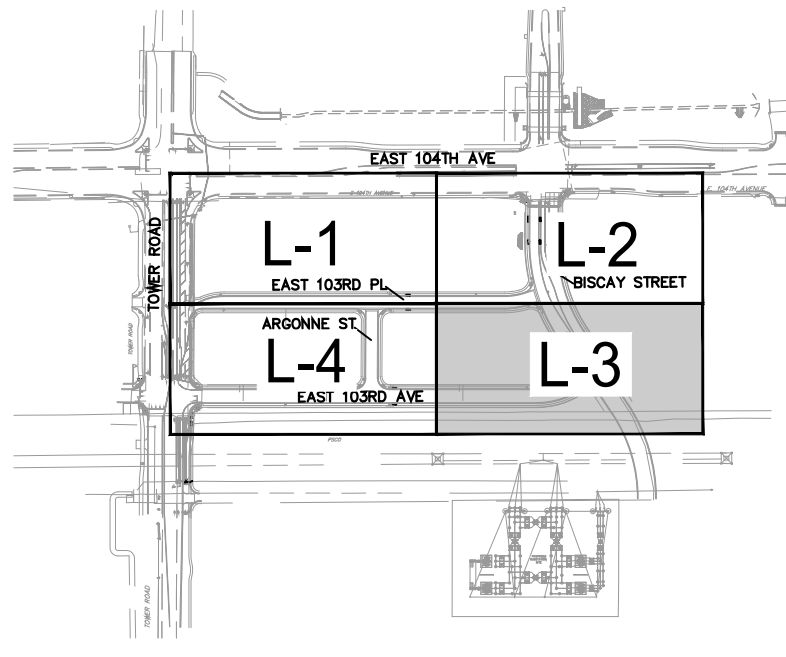
NATIVE SEED TALL BROADCAST RATE IS 37 LBS PLS PURE SPECIES CONTRACTOR SHALL APPLY NATIVE SEED AND
GRASS SEEDING MIX LIVE SEEDS/LBS/ACRAC WESTERN WHEATGRASS 'AMBA' OR NATIVE 19,100 SF EST. allow mulch by mechanical drilling.

MULCH

RIVER ROCK 1.5 TO 2" TAN COLORED 3" DEPTH 3,500 SF
MULCH WASHED ROCK OVER MIRAFI WEED BARRIER FABRIC. LOCATE FOR PLANS

COBBLE ROCK 8"-12" TAN COBBLE SMOOTH 10" DEPTH 2,000 SF
MULCH RIVER ROCK OVER MIRAFI WEED BARRIER FABRIC. LOCATE FOR PLANS

NOTE: SOD, NATIVE SEED AND SHRUBS TOTALS ARE FOR CONTRACTOR CONVENIENCE ONLY. WHERE CONFLICT OCCURS, THE AREA QUANTITIES SHOWN ON THE PLAN SHALL PREVAIL.

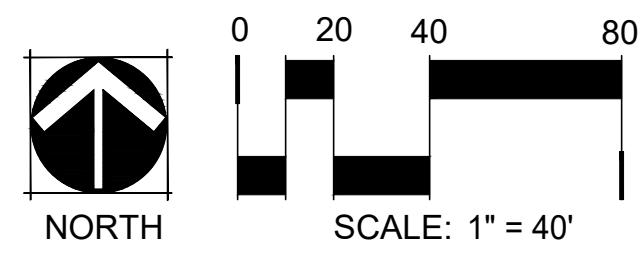


SIGNATURES

CITY STAFF CERTIFICATE

APPROVED BY THE DEPARTMENT OF COMMUNITY DEVELOPMENT OF THE CITY OF COMMERCE CITY, THIS _____ DAY OF _____, A.D. 20__.

BY: _____
DEPARTMENT OF COMMUNITY DEVELOPMENT



CALL 3 BUSINESS DAYS IN ADVANCE BEFORE YOU DIG, GRADE, OR EXCAVATE FOR THE MARKING OF UNDERGROUND MEMBER UTILITIES.

REUNION COMMERCIAL CENTER

FILING 1 - P.U.D. PERMIT

LOCATED IN THE NORTHWEST QUARTER OF SECTION 15, TOWNSHIP 2 SOUTH, RANGE 66 WEST OF THE 6TH PRINCIPAL MERIDIAN
CITY OF COMMERCE CITY, COUNTY OF ADAMS, STATE OF COLORADO

REUNION COMMERCIAL
CENTER FILING 1



REUNION COMMERCIAL
CENTER - FILING 1
PUD PERMIT

LANDSCAPE PLAN

SAGE DESIGN GROUP

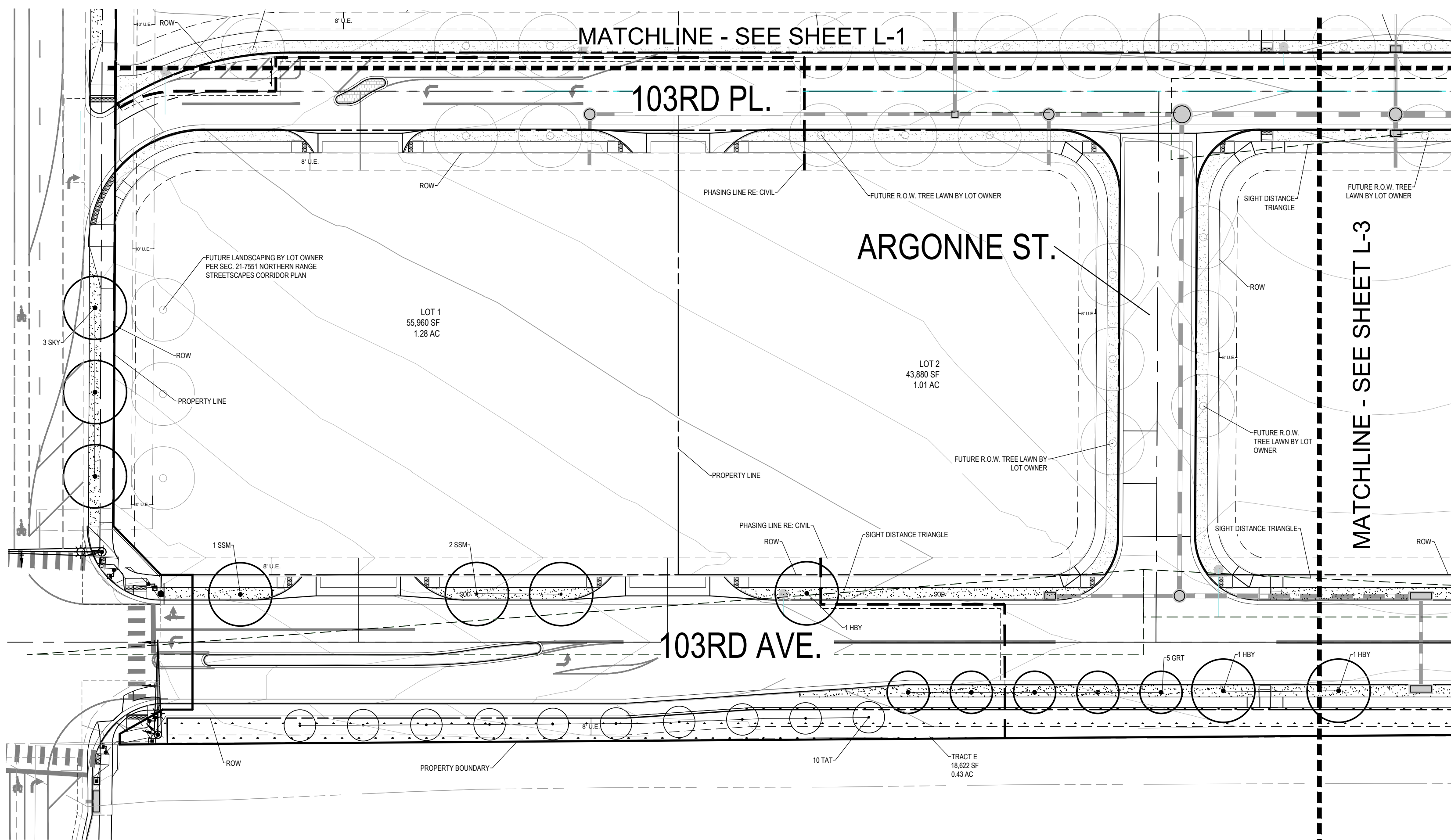
1500 South Pearl St., Suite 200
Denver, Colorado 80210
303.470.2855 (p) 303.470.2894 (f)



LANDSCAPE ARCHITECTURE
Site Planning
ENTITLEMENT

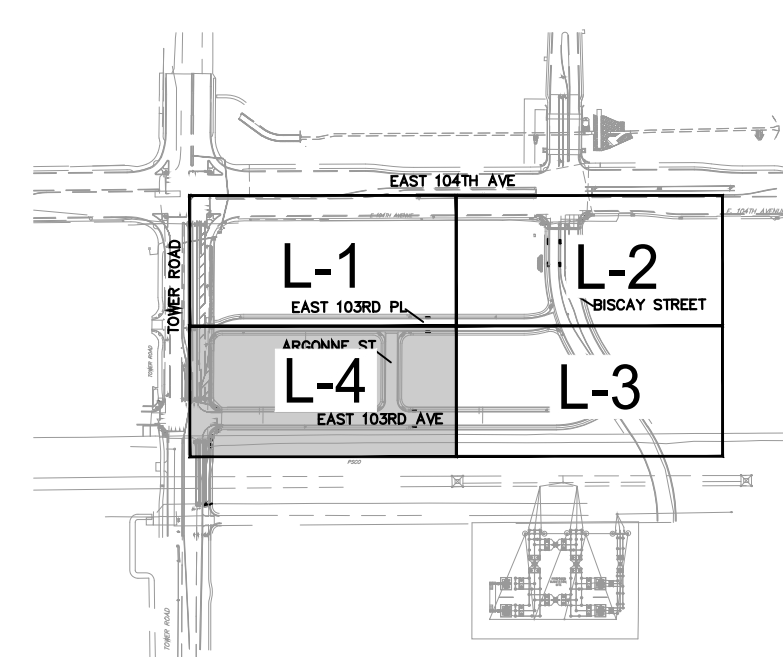
DATE: 10/19/21

L4



SYMBOL	COMMON NAME	BOTANICAL NAME	SIZE & CONDITION	QUANTITY
DECIDUOUS STREET TREES				
CMM	COLUMNAR NORWAY MAPLE	ACER PLATANOIDES 'COLUMNAR'	2" CAL. BAB	4
HQD	HERITAGE OAK	QUERCUS X MACCANNELLI 'CLEMONS'	2" CAL. BAB	7
COO	CHERRY OAK	QUERCUS HAVENLINDER	2" CAL. BAB	7
HBY	PRAIRIE PRIDE HACKBERRY	CELTIS OCCIDENTALIS PRAIRIE PRIDE	2" CAL. BAB	6
SSM	STATE STREET MAPLE	ACER NYRAE 'MORTON'	2" CAL. BAB	8
SKY	SKYLINE HONEYLOCUST	GLEDITSIA TRICANTHOS 'SKYLINE'	2" CAL. BAB	11
SPH	SPRINGWATER HONEYLOCUST	GLEDITSIA TRICANTHOS 'TNE 200'	2" CAL. BAB	3
			SUBTOTAL	42
EVERGREEN TREES				
AUS	AUSTRIAN PINE	PINUS NORA	6" B.B.	6
			SUBTOTAL	6
DECIDUOUS ORNAMENTAL TREES				
CHP	CHANTICLEER PEAR	PIRUS CALLERYANA 'ARISTOCAT'	1 1/2" CAL. BAB	4
GRT	GOLDEN RAIN TREE	KOELREUTERIA PANICULATA	1 1/2" CAL. BAB	12
TAT	TATARIAN MAPLE PATTERN PERFECT	ACER TATARICUM PATTERN PERFECT	1 1/2" CAL. BAB	10
			SUBTOTAL	16
DECIDUOUS SHRUBS				
BUS	BUSINESS SAGE	PEROVSKIA AETIOLOPODIA	3 GAL.	23
TLB	THRELLER BURNING	RHUS TRILOBATA	3 GAL.	6
LSB	LONG BRUSH BURNING	RHUS TRILOBATA 'LONG LOW'	3 GAL.	21
FRB	FRANKEE BUTTES SAND CHERRY	PRUNUS BESSEYI 'FRANKEE BUTTES'	3 GAL.	19
RED	RED THRU DOGWOOD	CORNUS SERICEA	3 GAL.	9
			SUBTOTAL	78
EVERGREEN AND BROADLEAF SHRUBS				
GRS	GREGSON GRASS	MANISSEA AZIFOLIA	3 GAL.	19
BCJ	BLUE CHIP JASMINE	JASMINUM HORIZONTALIS 'BLUE CHIP'	3 GAL.	6
			SUBTOTAL	25
ORNAMENTAL GRASSES				
FRG	FEATHERED REED GRASS	COLUMNOSTA & KOUTIFLORA 'NAEL CERSTER'	1 GAL.	8
FD	FRANKEE BURNING	SPERMATOPHYTES 'FRANKEE BURNING'	1 GAL.	24
MLG	MISCANTHUS	MISCANTHUS SPENSIS	1 GAL.	32
			SUBTOTAL	64

SYMBOL	COMMON NAME	QUANTITY
SOD		
	COLORADO BLACK BEAUTY FESCUE GRASS'S TURF FANDED, LOCATE PER PLAN, NO SUBSTITUTIONS UNLESS APPROVED BY REUNION METRO DISTRICT	21,000 SF
NATIVE SEED		
	NATIVE SEED BROADCAST RATE IS 5 LBS PER 1000 SQ FT	15,000 SF
	DETENTION POND MIX	
	SPERMATOPHYTES, SEDGES AND RUSHES	
	CONTRACTOR SHALL APPLY NATIVE SEED AND ESTABLISHMENT PER GRASS	
	CONTRACTOR SHALL DRILL THE SEED IN TWO DIRECTIONS USING 50% OF THE SEED PER QUANTITY WITH EACH PASS. THE SECOND PASS SHALL BE PERPENDICULAR TO THE FIRST PASSING IN A CROSS PATTERN. SEED AREAS TO HAVE 100% ESTABLISHMENT PER GRASS	
	RESEED AREAS SHALL BE REQUIRED TO BE RESEED AREAS FOR 100% ESTABLISHMENT	
	NATIVE SEED, TALL GRASS SEEDING MIX BROADCAST RATE IS 3 LBS PER 1000 SQ FT	18,100 SF
	LIVE SEEDS/LEBACRE	
	METERN WHEATGRASS 'AMBA' OR NATIVE BLUNDER WHEATGRASS	
	SHEEP FESCUE 'CONAR' OR BLUESTEM	
	YELLOW PINK GRASS	
	LITTLE BLUESTEM	
	BLUE GRASS 'LIVINGTON'	
	CONTRACTOR SHALL APPLY NATIVE SEED AND ESTABLISHMENT PER GRASS	
	CONTRACTOR SHALL DRILL THE SEED IN TWO DIRECTIONS USING 50% OF THE SEED PER QUANTITY WITH EACH PASS. THE SECOND PASS SHALL BE PERPENDICULAR TO THE FIRST PASSING IN A CROSS PATTERN. SEED AREAS TO HAVE 100% ESTABLISHMENT PER GRASS	
	RESEED AREAS SHALL BE REQUIRED TO BE RESEED AREAS FOR 100% ESTABLISHMENT	
MULCH		
	RIVER ROCK 1.5 TO 2" TAN COLORED WASHED ROCK OVER MINIMUM WEED BARRIER FABRIC. LOCATE PER PLAN	3,500 SF
	COBBLE ROCK 8" TO 12" TAN COBBLE, SMOOTH RIVER ROCK OVER MINIMUM WEED BARRIER FABRIC. LOCATE PER PLAN	2,000 SF



SIGNATURES CITY STAFF CERTIFICATE

APPROVED BY THE DEPARTMENT OF COMMUNITY DEVELOPMENT OF THE CITY OF COMMERCE CITY, THIS _____ DAY OF _____, A.D. 20____.

BY: _____
DEPARTMENT OF COMMUNITY DEVELOPMENT



KEY MAP

N.T.S.



CALL 3 BUSINESS DAYS IN ADVANCE BEFORE YOU DIG, GRADE, OR EXCAVATE FOR THE MARKING OF UNDERGROUND MEMBER UTILITIES.

REUNION COMMERCIAL CENTER

FILING 1 - P.U.D. PERMIT

LOCATED IN THE NORTHWEST QUARTER OF SECTION 15, TOWNSHIP 2 SOUTH, RANGE 66 WEST OF THE 6TH PRINCIPAL MERIDIAN
CITY OF COMMERCE CITY, COUNTY OF ADAMS, STATE OF COLORADO

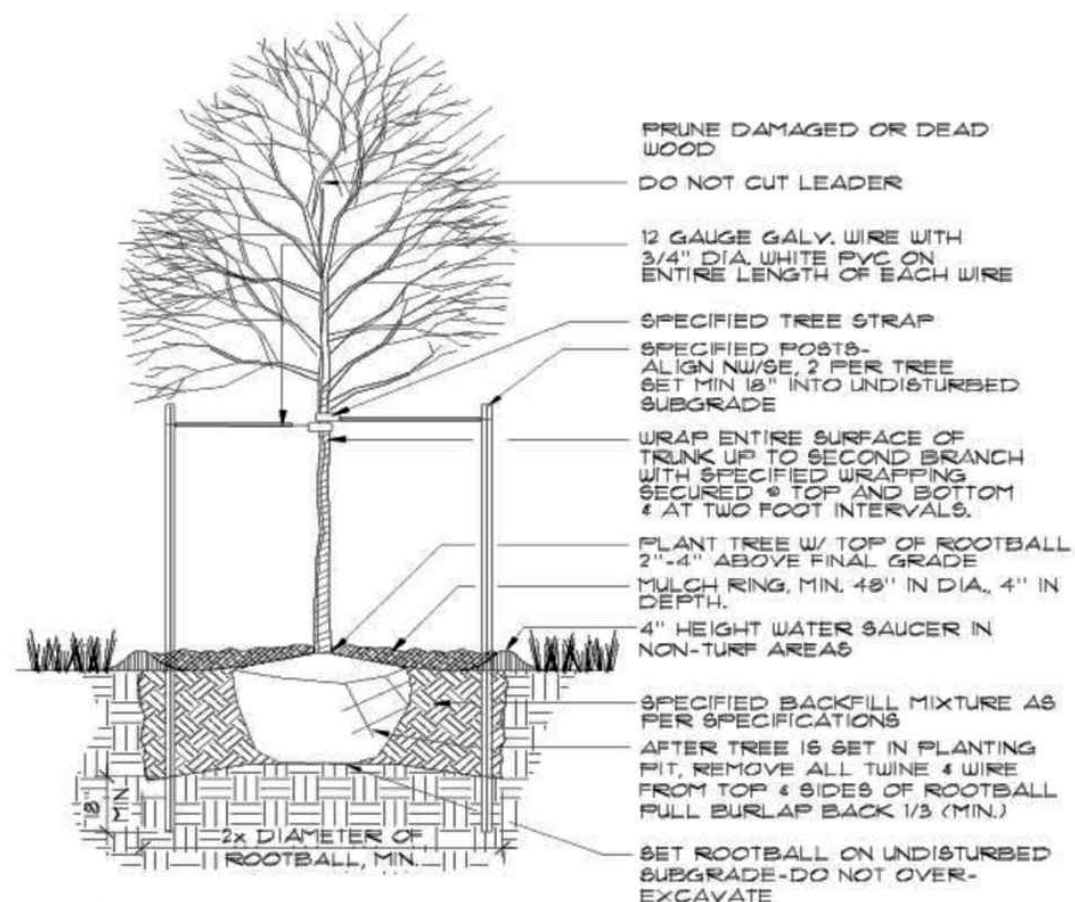
REUNION COMMERCIAL CENTER FILING 1



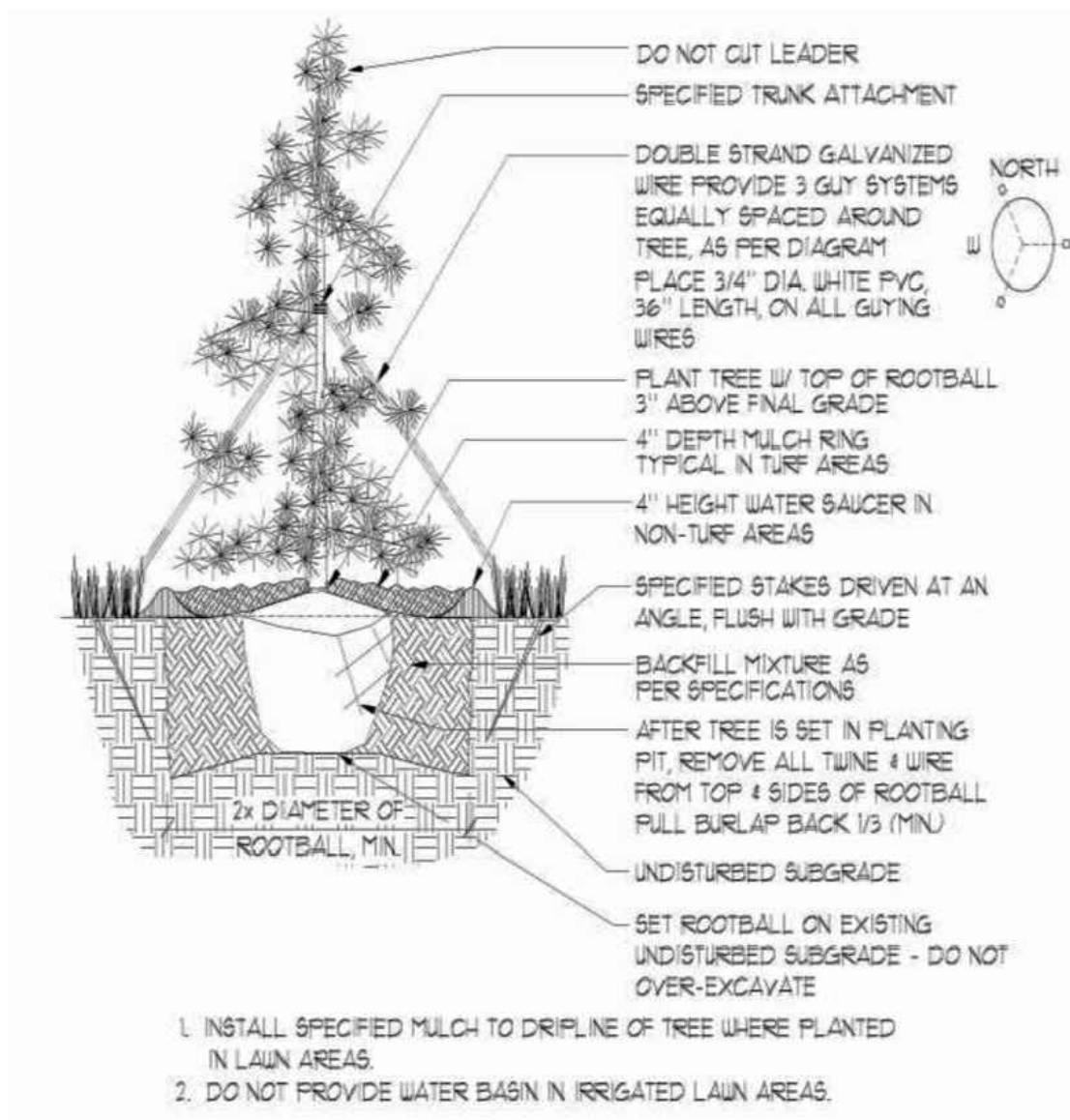
REUNION COMMERCIAL CENTER - FILING 1
PUD PERMIT

LANDSCAPE DETAILS

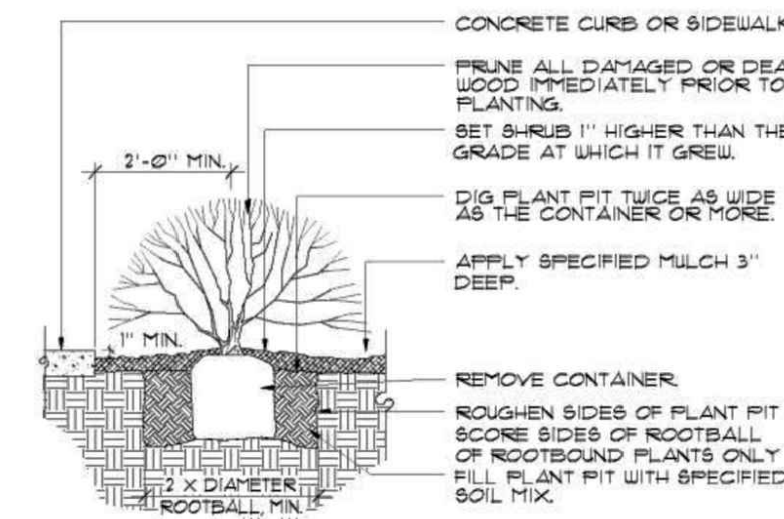
SAGE DESIGN GROUP
1500 South Pearl St., Suite 200
Denver, Colorado 80210
303.470.2855 (p) 303.470.2894 (f)



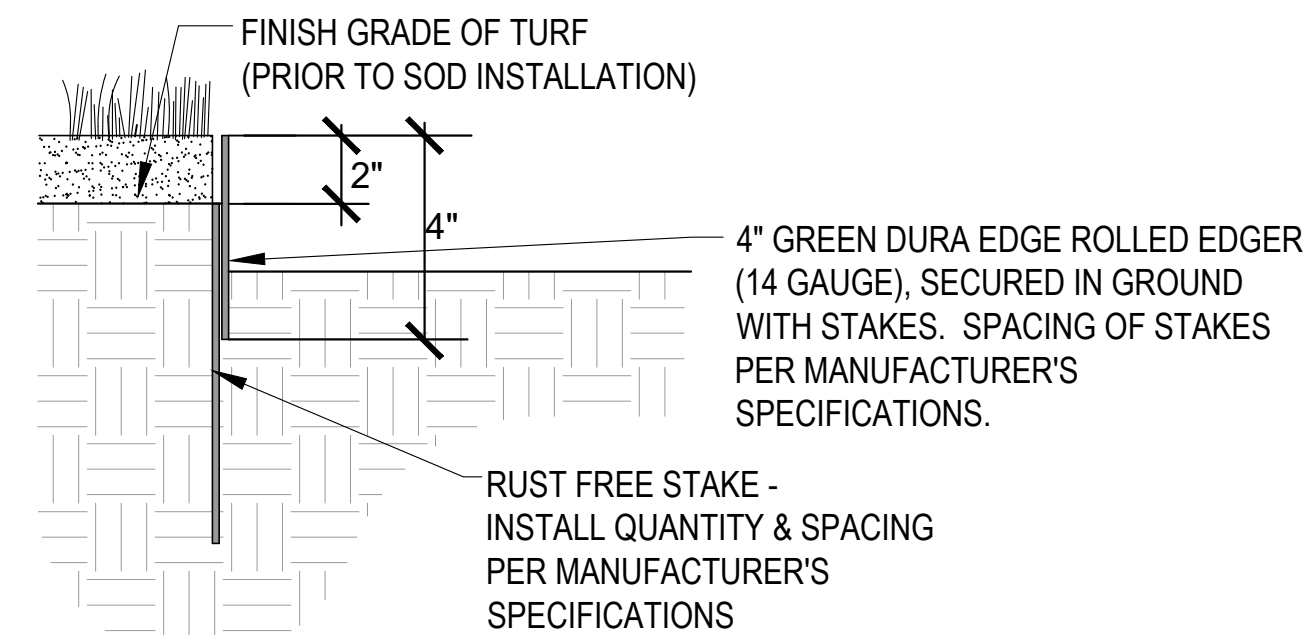
1 DECIDUOUS TREE DETAIL
L-5 N.T.S.



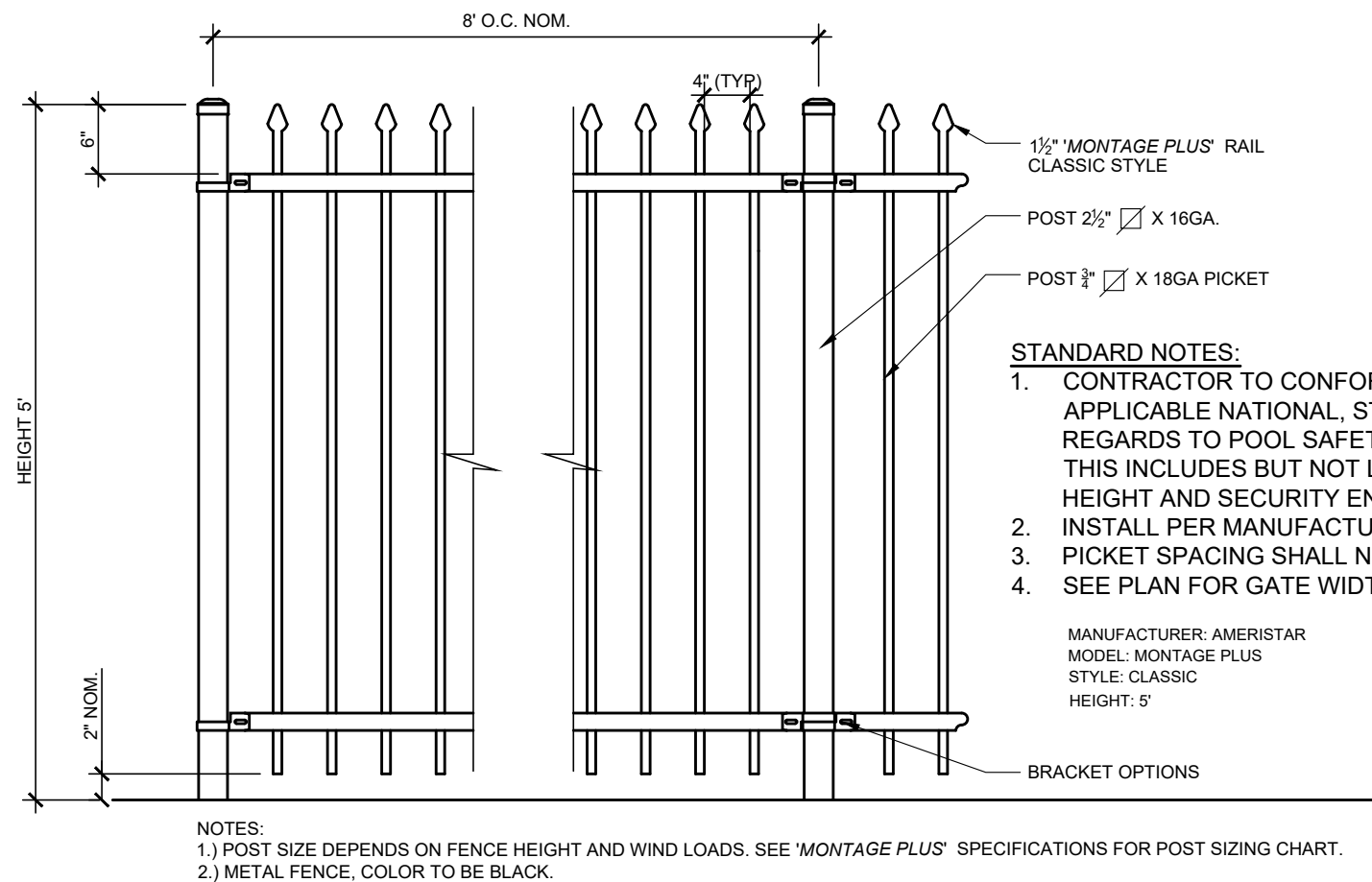
2 DECIDUOUS TREE DETAIL
L-5 N.T.S.



3 SHRUB PLANTING DETAIL
L-5 N.T.S.



4 STEEL EDGING DETAIL
L-5 N.T.S.



5 DETENTION POND FENCE
L-5 N.T.S.

SIGNATURES

CITY STAFF CERTIFICATE

APPROVED BY THE DEPARTMENT OF COMMUNITY DEVELOPMENT OF THE CITY OF COMMERCE CITY, THIS _____ DAY OF _____, A.D. 20__.

BY: _____
DEPARTMENT OF COMMUNITY DEVELOPMENT

DATE: 10/19/21



CALL 3 BUSINESS DAYS IN ADVANCE BEFORE YOU DIG, GRADE, OR EXCAVATE FOR THE MARKING OF UNDERGROUND MEMBER UTILITIES

L-5

REUNION COMMERCIAL CENTER

FILING 1 - P.U.D. PERMIT

LOCATED IN THE NORTHWEST QUARTER OF SECTION 15, TOWNSHIP 2 SOUTH, RANGE 66 WEST OF THE 6TH PRINCIPAL MERIDIAN
CITY OF COMMERCE CITY, COUNTY OF ADAMS, STATE OF COLORADO

REUNION COMMERCIAL
CENTER FILING 1



REUNION COMMERCIAL
CENTER - FILING 1
PUD PERMIT

LANDSCAPE NOTES



1500 South Pearl St., Suite #100
Denver, Colorado 80210
303.470.2855 (p) 303.470.2884 (f)

LANDSCAPE ARCHITECT
Site Planning
ENTITLEMENT

DATE: 10/19/21

L-6

PLANTING NOTES:

COMMERCE CITY LANDSCAPE NOTES: Minimum Plant Size Requirements and Soil Preparation:

- A.) MINIMUM PLANT SIZE REQUIREMENTS ARE 2-INCH DIAMETER (CALIPER) FOR DECIDUOUS TREES, 1.5-INCH DIAMETER FOR ORNAMENTAL TREES AND 6-FOOT HEIGHT FOR EVERGREEN TREES. MINIMUM SIZE REQUIREMENTS FOR SHRUBS IS #5 GALLON CONTAINER; ORNAMENTAL GRASSES ONE GALLON CONTAINER; PERENNIALS AND GROUND COVERS 2 1/4 POTS. PLANTS SHOULD BE MIXED APPROXIMATELY 50% CONIFEROUS (EVERGREEN) AND 50% DECIDUOUS (TREE LAWN AREAS BETWEEN CURBS AND DETACHED WALKS SHALL BE ALL DECIDUOUS SHADE TREES). MINIMUM SOIL PREPARATION FOR PLANTING SHALL BE 5 CUBIC YARDS OF ORGANIC SOIL AMENDMENT TILLED TO A DEPTH OF 6 INCH FOR EVERY 1,000 S.F. OF LANDSCAPE AREA.
- B.) **STREET TREES:** THE DEPARTMENT OF COMMUNITY DEVELOPMENT HAS IDENTIFIED SPECIFIC DECIDUOUS TREE SPECIES TO BE PLANTED WITHIN TREE LAWN AREAS. ALL TREES CHOSEN FOR TREE LAWN APPLICATIONS MUST BE SELECTED FROM THE APPROVED CITY LIST.
- C.) **WEED BARRIER:** POROUS WEED FABRIC MUST BE USED IN PLANTED BEDS FOR WEED PREVENTION, BECAUSE IT ALLOWS VENTILATION FOR ROOTS AND TRANSMISSION OF WATER. PLASTIC WEED BARRIERS IN ANY PLANTED AREA WILL NOT BE APPROVED.
- D.) **EDGING:** PLASTIC OR FIBERGLASS EDGING IS FAVORABLE TO METAL. HOWEVER, METAL EDGING MAY BE USED PROVIDED IT HAS A ROLLOVER TOP OR A PROTECTIVE CAP IS INSTALLED.
- E.) MAINTENANCE:
 - (1) THE DEVELOPER, HIS SUCCESSORS AND ASSIGNS, SHALL BE RESPONSIBLE FOR INSTALLATION, MAINTENANCE AND REPLACEMENT OF ALL LANDSCAPING MATERIALS SHOWN OR INDICATED ON THE APPROVED SITE PLAN, DEVELOPMENT PLAN, OR LANDSCAPE PLAN, INCLUDING THOSE AREAS FOUND IN THE RIGHT-OF-WAY.
 - (2) LANDSCAPING SHALL BE CONTINUOUSLY MAINTAINED INCLUDING NECESSARY WATERING, WEEDING, PRUNING, PEST CONTROL, AND REPLACEMENT OF DEAD OR DISEASED PLANT MATERIAL. REPLACEMENT FOR DEAD OR DISEASED PLANT MATERIAL SHALL BE OF THE SAME TYPE OF PLANT MATERIAL AS SET FORTH IN THE APPROVED SITE PLAN; FOR EXAMPLE, A TREE MUST REPLACE A TREE, A SHRUB MUST REPLACE A SHRUB, ETC. REPLACEMENT SHALL OCCUR IN THE NEXT PLANTING SEASON, BUT IN ANY EVENT, SUCH REPLACEMENT TIME SHALL NOT EXCEED ONE (1) YEAR.
 - (3) THIS APPROVED SITE PLAN, DEVELOPMENT PLAN, OR LANDSCAPE PLAN SHALL BE ON FILE IN THE PLANNING DEPARTMENT. ALL LANDSCAPING WILL BE INSTALLED AS DELINEATED ON THE PLAN, PRIOR TO ISSUANCE OF ANY CERTIFICATE OF OCCUPANCY.
- F.) SIGHT LINE CONSIDERATIONS: ANY AREA DETERMINED BY THE CITY ENGINEER TO BE WITHIN A SIGHTDISTANCE-TRIANGLE MAY NOT CONTAIN PLANT MATERIAL THAT AT THE TIME OF PLANTING OR AT MATURITY EXCEEDS 36 INCHES ABOVE THE GUTTER FLOW LINE EXCEPT TREES WHICH MUST BE LIMBED TO 8 FEET AT ADEQUATE MATURITY. TREES SHALL BE PLANTED A MINIMUM OF TEN FEET FROM INTERSECTIONS AND FIFTEEN FEET FROM LIGHT OR UTILITY POLES. ALL OTHER LANDSCAPE FEATURES SHALL NOT EXCEED 36 INCHES WITHIN SIGHTDISTANCE- TRIANGLES. INFORMATION ON SIGHT DISTANCE TRIANGLES MAY BE OBTAINED FROM THE CITY OF COMMERCE CITY ENGINEERING STANDARDS AND SPECIFICATIONS - SECTION 3.03.2 TABLE 3-1.
- G.) IMPLEMENTATION AND COORDINATION OF LANDSCAPE PLAN: THE DEVELOPER SHALL ENSURE THAT THE LANDSCAPE PLAN IS CLOSELY COORDINATED WITH PLANS PREPARED BY OTHER CONSULTANTS SO THAT THE PROPOSED GRADING, STORM DRAINAGE OR OTHER CONSTRUCTION DOES NOT CONFLICT WITH OR PRECLUDE THE INSTALLATION AND MAINTENANCE OF LANDSCAPE ELEMENTS AS DESIGNATED ON THE LANDSCAPE PLAN.
- H.) IRRIGATION: ALL LANDSCAPED AREAS AND PLANT MATERIALS, EXCEPT FOR NON-IRRIGATED NATIVE, RESTORATIVE, AND DRY LAND GRASS AREAS MUST BE WATERED BY AN AUTOMATIC UNDERGROUND IRRIGATION SYSTEM. IRRIGATION SYSTEM DESIGN, INSTALLATION, OPERATION, AND MAINTENANCE SHALL CONFORM TO THE REQUIREMENTS OF SOUTH ADAMS COUNTY WATER AND SANITATION DISTRICT. APPROVAL OF THIS LANDSCAPE PLAN DOES NOT CONSTITUTE APPROVAL FROM SOUTH ADAMS COUNTY WATER AND SANITATION DISTRICT FOR ANY IRRIGATION SYSTEM. ALL IRRIGATION PLANS, OR PORTIONS THEREOF, DESIGNED FOR PUBLIC RIGHT-OF-WAYS SHALL SPECIFY PARTS/COMPONENTS FROM THE CITY APPROVED IRRIGATION PARTS/COMPONENT LIST.
- I.) NATIVE GRASS NOTE: ALL AREAS OF THE LOT NOT PAVED OR FORMALLY LANDSCAPED, SHALL BE, AT A MINIMUM, SEEDED WITH NATIVE GRASSES.
- J.) VEHICLE PARKING NOTE: NO VEHICLE PARKING IS ALLOWED IN ANY LANDSCAPE TREATMENT AREA.

MISCELLANEOUS PLANTING NOTES:

1. CONTRACTOR SHALL OBTAIN A LABORATORY SOIL ANALYSIS REPORT (EXISTING ONSITE SOIL) TO PROVIDE ANALYSIS OF EXISTING SITE SOIL FERTILITY AND RECOMMENDATIONS FOR SOIL AMENDMENTS, FERTILIZER PRODUCTS AND APPLICATION RATES FOR SHRUB BED, NATIVE SEED, AND SOD. SOIL SAMPLES SHALL BE TAKEN TO A DEPTH OF NOT LESS THEN 6 INCHES AND AN AGGREGATE OF AT LEAST THREE SAMPLES PER PLANTING AREA TYPE (SHRUB BEDS, NATIVE SEED, AND SOD), MIXED TOGETHER TO CONSTITUTE ONE SAMPLE. ONE SAMPLE FOR SHRUB BED, SOD AND NATIVE AREAS SHALL BE SUBMITTED IN A SEPARATE BAG AND MARKED WITH PLANTING AREA TYPE (SHRUB BED, NATIVE SEED, AND SOD). SUBMIT SAMPLES TO A SOILS LABORATORY FOR ANALYSIS (COLORADO ANALOGICAL LABORATORIES (COMPLETE NUTRIENT TEST), 303 - 659 - 2313). CONTRACTOR SHALL SUBMIT SOILS ANALYSIS REPORT(S) AND RECOMMENDATIONS TO LANDSCAPE ARCHITECT FOR APPROVAL BEFORE ANY AMENDMENTS ARE ORDERED, DELIVERED TO SITE OR ANY WORK TAKES PLACE. EACH SOIL ANALYSIS REPORT SHALL LIST TYPE (SHRUB BED AND SOD) CLEARLY. ALL LABORATORY TESTING SHALL BE BORN BY THE CONTRACTOR. CONTRACTOR TO CONTACT LANDSCAPE ARCHITECT IF MORE INFORMATION IS REQUIRED FOR SOIL TESTING.
2. PRIOR TO PLANTING ANY TREES ON SITE, THE LANDSCAPE CONTRACTOR SHALL PERFORM A SOIL PERCOLATION TEST TO DETERMINE IF THERE ARE ANY DRAINAGE PROBLEMS. THE LANDSCAPE CONTRACTOR IS REQUIRED TO DIG ONE HOLE (A MINIMUM OF ONE LOCATION). THE HOLE SHALL BE EQUAL IN SIZE TO THE LARGEST TREE PLANTING PIT REQUIRED FOR PARTICULAR LOCATION. ADDITIONAL LOCATIONS WILL BE REQUIRED IF VARIOUS SOIL TYPES ARE FOUND AROUND THE SITE AND/OR IF THE OWNER'S REPRESENTATIVE FINDS IT NECESSARY. THE LANDSCAPE CONTRACTOR SHALL VERIFY PERCOLATION TEST PIT LOCATIONS WITH OWNERS REPRESENTATIVE AND FILL EACH HOLE WITH WATER AND MONITOR HOW MUCH WATER IS REMAINING IN THE HOLE AFTER 24 HOURS. MAKE A WRITTEN REPORT TO THE OWNER REPRESENTATIVE. IF IT IS DETERMINED THAT SOIL DRAINAGE IS A PROBLEM A RESOLUTION WILL BE WORKED OUT BY THE OWNER AND IF NECESSARY A CHANGE ORDER WILL BE INITIATED.
3. FERTILIZER FOR PLANT BACKFILL SHALL BE DETERMINED BY SOILS REPORT AND SHALL BE APPLIED ACCORDING TO MANUFACTURER'S RECOMMENDATIONS.
4. ALL PLANT MATERIALS SHALL MEET OR EXCEED SIZE IN SCHEDULES. OWNER'S REPRESENTATIVE RESERVES THE RIGHT TO REFUSE PLANT MATERIALS WHICH DO NOT MEET THE QUALITY REQUIRED FOR THE PROJECT. ALL DECIDUOUS TREES SHALL HAVE FULL, WELL SHAPED HEADS, ALL EVERGREEN TREES SHALL BE UNSHEARED AND FULL TO THE GROUND. PLANT MATERIAL SHALL COMPLY WITH THE LATEST EDITION OF THE AMERICAN STANDARD FOR NURSERY STOCK, ANSI Z60.1.
5. ALL TREES TO BE STAKED OR GUYED PER DETAILS ON SHEET L-5.
6. BACKFILL MATERIAL FOR ALL TREES AND SHRUBS CONSIST OF THE FOLLOWING MIXTURE:
 - A. TWO (2) PARTS AMENDMENTED TOPSOIL (BASED ON SOILS ANALYSIS REPORT)
 - B. ONE (1) PART ORGANIC SOIL AMENDMENTMATERIALS TO BE THOROUGHLY BLENDED AND MIXED IN BULK PRIOR TO BACKFILLING. BACKFILLING MIX TO BE MIXED TO HOMOGENEOUS CONDITION IN SPECIFIC AREA AWAY FROM PLANT EXCAVATIONS.
7. TREE WRAPPING MATERIAL SHALL BE FOUR INCHES WIDE, BITUMINOUS IMPREGNATED TAPE, CORRUGATED OR CREPE PAPER, BROWN IN COLOR, SPECIFICALLY MANUFACTURED FOR TREE WRAPPING. TREES SHALL BE WRAPPED BETWEEN OCTOBER 15 AND NOVEMBER 1 OF THE YEAR THEY ARE PLANTED. NO TREE WRAPPING SHALL BE PERMITTED UNTIL A LICENSED LANDSCAPE CONTRACTOR OR CERTIFIED ARBORIST HAS INSPECTED THE TREE. IT IS THE DUTY OF THE CONTRACTOR TO WRAP DECIDUOUS TREES DURING THE ONE-YEAR WARRANTY PERIOD.
8. NO PLANT REPLACEMENTS (SPECIES/CULTIVARS) UNLESS APPROVED BY LANDSCAPE ARCHITECT
9. ALL TREES AND SHRUBS SHALL BE GUARANTEED TO REMAIN ALIVE AND HEALTHY FOR A 12-MONTH PERIOD AFTER INITIAL ACCEPTANCE. ALL REPLACEMENT COSTS SHALL BE BORN BY THE CONTRACTOR.

Weed Barrier and Shrub Bed Mulch:

1. SHRUB BEDS TO BE MULCHED PER PLAN. ABSOLUTELY NO EXPOSED GROUND SHALL BE LEFT SHOWING ANYWHERE ON THE PROJECT AFTER MULCH HAS BEEN INSTALLED.
2. ROCK MULCH SHALL BE TAN COLORED WASHED RIVER ROCK (PIONEER SAND, 303-841-3737), 1.5" TO 2" DIAMETER PLACED OVER TYPAR LANDSCAPE FABRIC. ABSOLUTELY NO EXPOSED GROUND SHALL BE LEFT SHOWING ANYWHERE ON THE PROJECT AFTER FABRIC AND MULCH HAVE BEEN INSTALLED.
3. LARGE COBBLE TO BE 8"-12" DIAMETER TAN COLORED (PIONEER SAND, 303-841-3737) WHERE SHOWN ON PLANS. ALL COBBLE AREAS TO BE PLACED OVER TYPAR LANDSCAPE FABRIC. ABSOLUTELY NO EXPOSED GROUND SHALL BE LEFT SHOWING ANYWHERE ON THE PROJECT AFTER FABRIC AND MULCH HAVE BEEN INSTALLED.
4. CONTRACTOR SHALL SUBMIT SAMPLES OF ALL MULCH TYPES & FABRIC TO OWNER FOR APPROVAL BEFORE ORDERING OR INSTALLATION.

Irrigation System:

1. COORDINATE IRRIGATION INSTALLATION WITH PROPOSED TREE LOCATIONS TO ENSURE PROPER FINAL PLACEMENT.
2. ALL IRRIGATION MUST MEET THE REQUIREMENTS OF THE SOUTH ADAMS COUNTY WATER AND SANITATION DISTRICT. APPROVAL OF THIS PLAN DOES NOT CONSTITUTE APPROVAL FROM THE WATER DISTRICT.

MISCELLANEOUS NOTES:

1. THE BASE PLANS ON THESE DRAWINGS HAVE BEEN PLOTTED FROM THE BEST AVAILABLE INFORMATION, HOWEVER, IT IS THE LANDSCAPE CONTRACTOR'S RESPONSIBILITY TO FIELD VERIFY ALL MATERIAL LOCATIONS AND NOTIFY THE OWNER'S REPRESENTATIVE OF ANY DISCREPANCIES THAT ARE FOUND.
2. THE LANDSCAPE CONTRACTOR SHALL HAVE ONE (1) APPROVED COPY OF PLANS AND SPECIFICATIONS AT THE JOB SITE AT ALL TIMES.
3. THE LANDSCAPE CONTRACTOR SHALL BE RESPONSIBLE FOR INSTALLING AND MAINTAINING ALL CONSTRUCTION BARRICADES, SIGNS, AND WARNING DEVICES NECESSARY DURING CONSTRUCTION.
4. LANDSCAPE CONTRACTOR SHALL MAINTAIN A QUALIFIED SUPERVISOR ON SITE AT ALL TIMES DURING CONSTRUCTION.
5. LANDSCAPE CONSTRUCTION SHALL CONFORM TO ALL APPLICABLE STATE AND LOCAL CODES AND SPECIFICATIONS.
6. LANDSCAPE CONTRACTOR SHALL COORDINATE AND OBTAIN ALL PERMITS AT THEIR OWN EXPENSE, WHICH ARE NECESSARY TO PERFORM ALL PROPOSED WORK AND SHALL COMPLY WITH ALL NOTIFICATION AND INSPECTION REQUIREMENTS.
7. LANDSCAPE CONTRACTOR SHALL EXAMINE THE SITE CONDITIONS UNDER WHICH THE WORK IS TO BE PERFORMED AND NOTIFY THE GENERAL CONTRACTOR IN WRITING OF UNSATISFACTORY CONDITIONS. DO NOT PROCEED UNTIL CONDITIONS HAVE BEEN CORRECTED.
8. BEFORE COMMENCING WORK, CONTACT APPROPRIATE UTILITY COMPANIES FOR UTILITY LOCATIONS, AND COORDINATE WITH THE GENERAL CONTRACTOR IN REGARD TO LOCATION OF PROPOSED UTILITIES, IRRIGATION SLEEVES, CONDUITS, (ETC). LANDSCAPE CONTRACTOR SHALL BE RESPONSIBLE FOR ANY MODIFICATIONS OR DAMAGES TO THE UTILITY LINES, STRUCTURES OR INJURIES THEREFROM. FOR EXISTING UTILITY INFORMATION CONTACT "THE UTILITY NOTIFICATION CENTER OF COLORADO" AT 1-800-922-1987. A MINIMUM OF THREE (3) BUSINESS DAY NOTICE IN ADVANCE OF LOCATIONS NEEDED ARE REQUIRED.
9. ALL TREE LOCATIONS ARE TO BE STAKED FOR APPROVAL BY THE OWNER'S REPRESENTATIVE PRIOR TO INSTALLATION.
10. WHERE PROVIDED, AREA TAKEOFFS AND QUANTITY ESTIMATES ARE PROVIDED FOR CONTRACTOR CONVENIENCE ONLY. THE CONTRACTOR IS RESPONSIBLE TO DO THEIR OWN QUANTITY TAKEOFFS FOR ALL MATERIALS AND SIZES SHOWN ON THE PLANS. IN THE CASE OF DISCREPANCIES, PLANS TAKE PRECEDENCE OVER CALL-OUTS AND/OR LISTS.
11. LANDSCAPE CONTRACTOR TO SUBMIT SAMPLES OF MISCELLANEOUS LANDSCAPE & HARDSCAPE MATERIALS TO OWNER'S REPRESENTATIVE FOR APPROVAL PRIOR TO INSTALLATION, IE.; MULCH, LANDSCAPE FABRIC (ETC).
12. THE LANDSCAPE CONTRACTOR SHALL CONTACT THE LANDSCAPE ARCHITECT AND SCHEDULE A PRE-CONSTRUCTION MEETING BEFORE ANY CONSTRUCTION TAKES PLACE.
13. ALL MATERIAL AND WORKMANSHIP SHALL BE GUARANTEED AND MAINTAINED FOR ONE YEAR FROM THE DATE OF INITIAL ACCEPTANCE. ALL REPLACEMENT COST SHALL BE BORN BY THE CONTRACTOR.
14. ALL LANDSCAPE CONSTRUCTION PRACTICES, WORKMANSHIP, AND ETHICS SHALL, BE IN ACCORDANCE WITH INDUSTRY STANDARDS SET FORTH IN THE CONSTRUCTION HANDBOOK PUBLISHED BY THE COLORADO LANDSCAPE CONTRACTORS ASSOCIATION.

SIGNATURES

CITY STAFF CERTIFICATE

APPROVED BY THE DEPARTMENT OF COMMUNITY DEVELOPMENT
OF THE CITY OF COMMERCE CITY, THIS ____ DAY OF _____, A.D. 20__.

BY: _____
DEPARTMENT OF COMMUNITY DEVELOPMENT



CALL 3 BUSINESS DAYS IN ADVANCE BEFORE YOU DIG, GRADE, OR EXCAVATE FOR THE MARKING OF UNDERGROUND MEMBER UTILITIES