

Context



Conceptual Land Use

residential



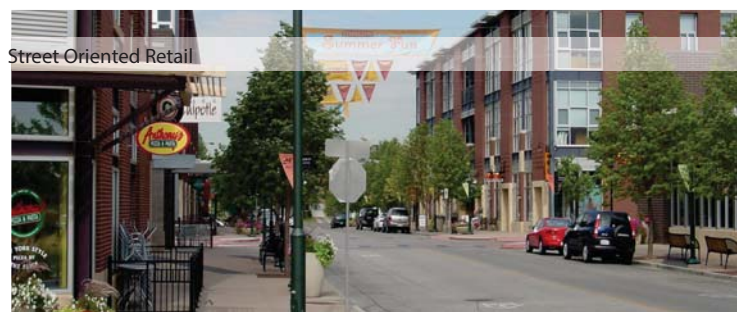
High Density



Low Density



retail



Street Oriented Retail



Big Anchor Retail



parks & open space



Passive Recreation



Active Recreation



education and job creation

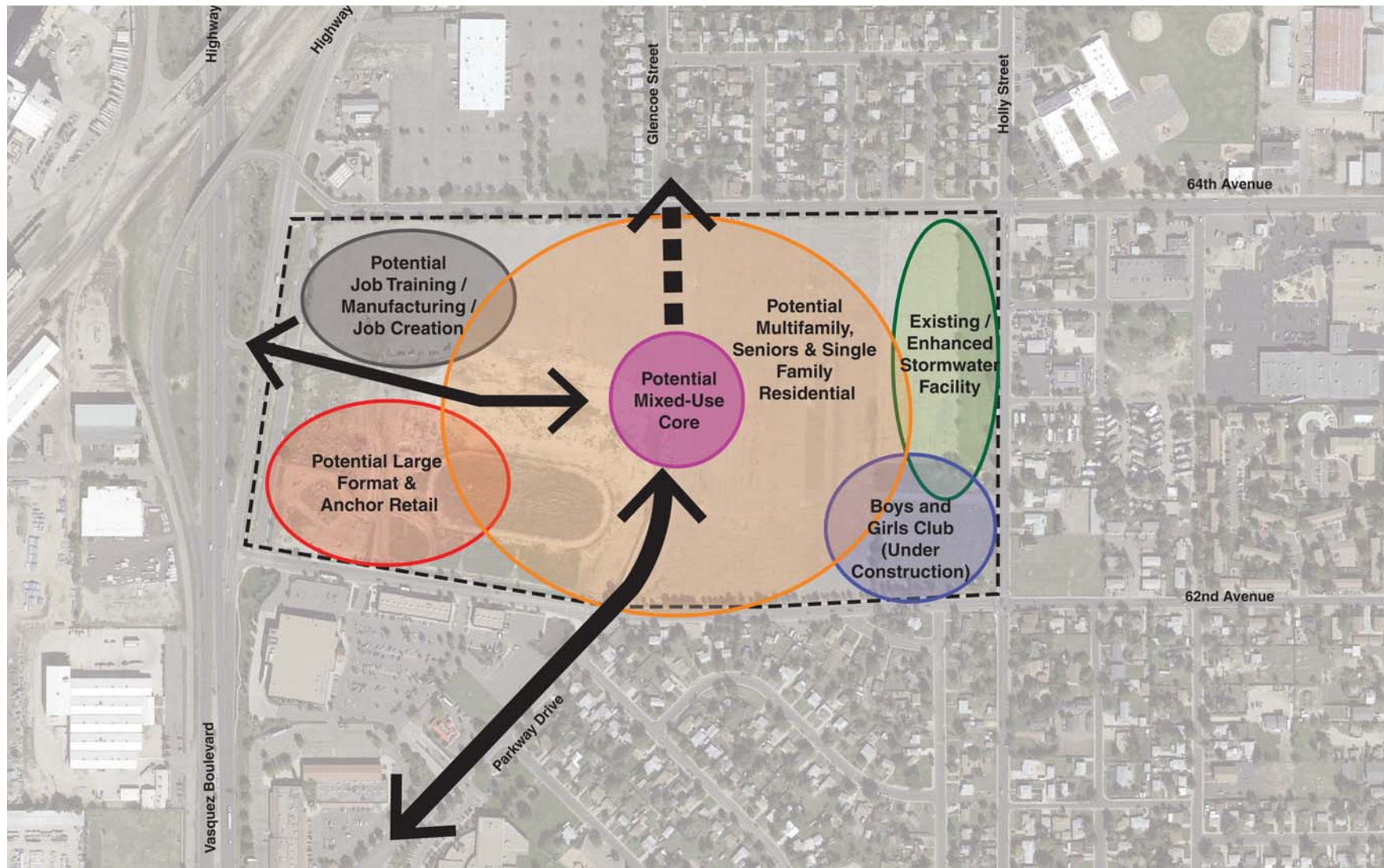


connectivity

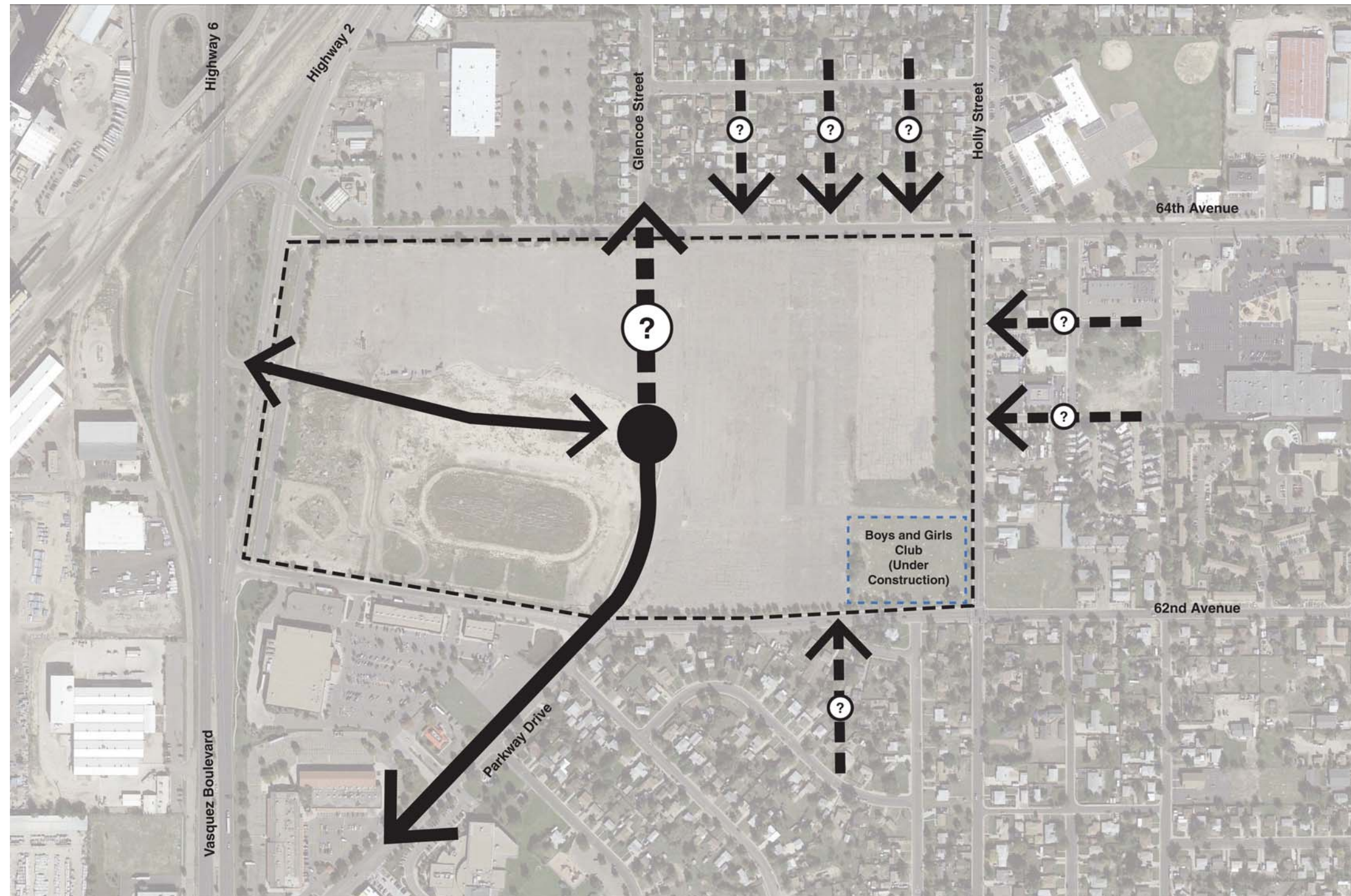
Connectivity is an essential element for functioning communities allowing for access between destinations and creating a sense of place.

Should Parkway Drive continue through and connect to 64th Street?

Are there any other connections you think are important?



Conceptual Land Use



Connectivity

connectivity



Planted Medians provide buffer zone



Vegetated buffer for side walk



Tree lined Streets



Pedestrian oriented paths



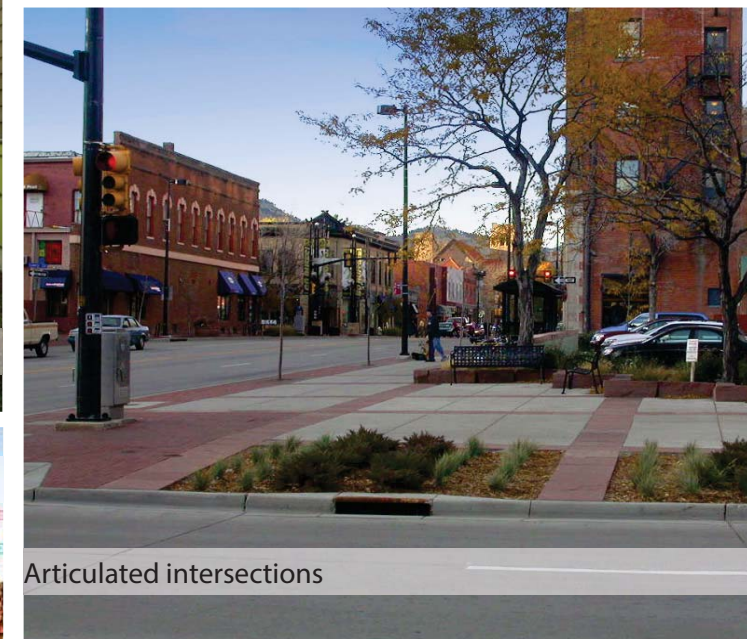
Vegetated buffer zones for pedestrian sidewalks



Dedicated Bike Lanes



Private Walkways



Articulated intersections



Residential scale Walkways & Parking



Dedicated Parking



Planted Medians



Public flexible space



Pedestrian scale oriented

retail mix

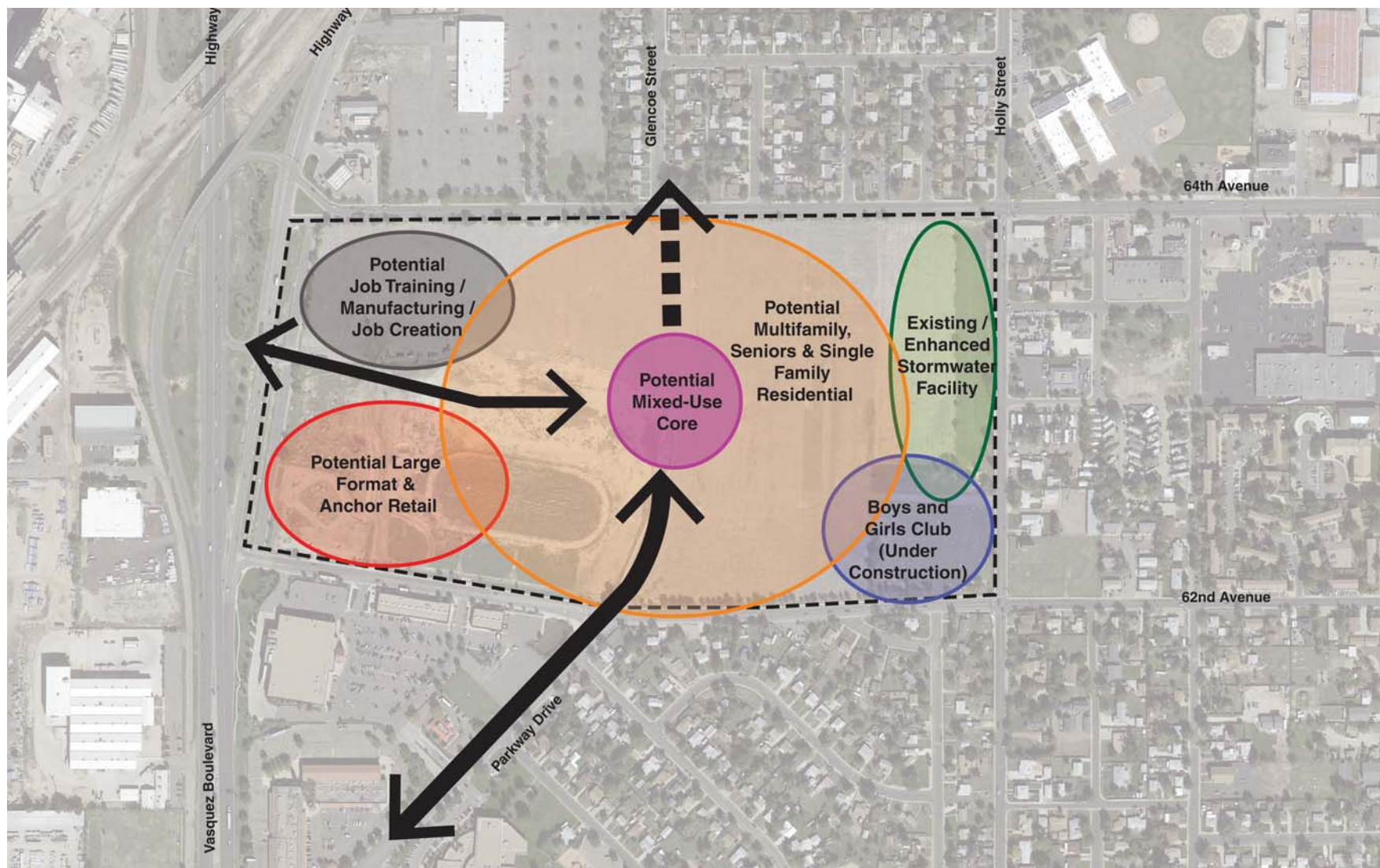
Retail in a community is a local economic activator bringing in jobs, revenue and business to the area.

Small street-oriented shops add local business and define the community's character.

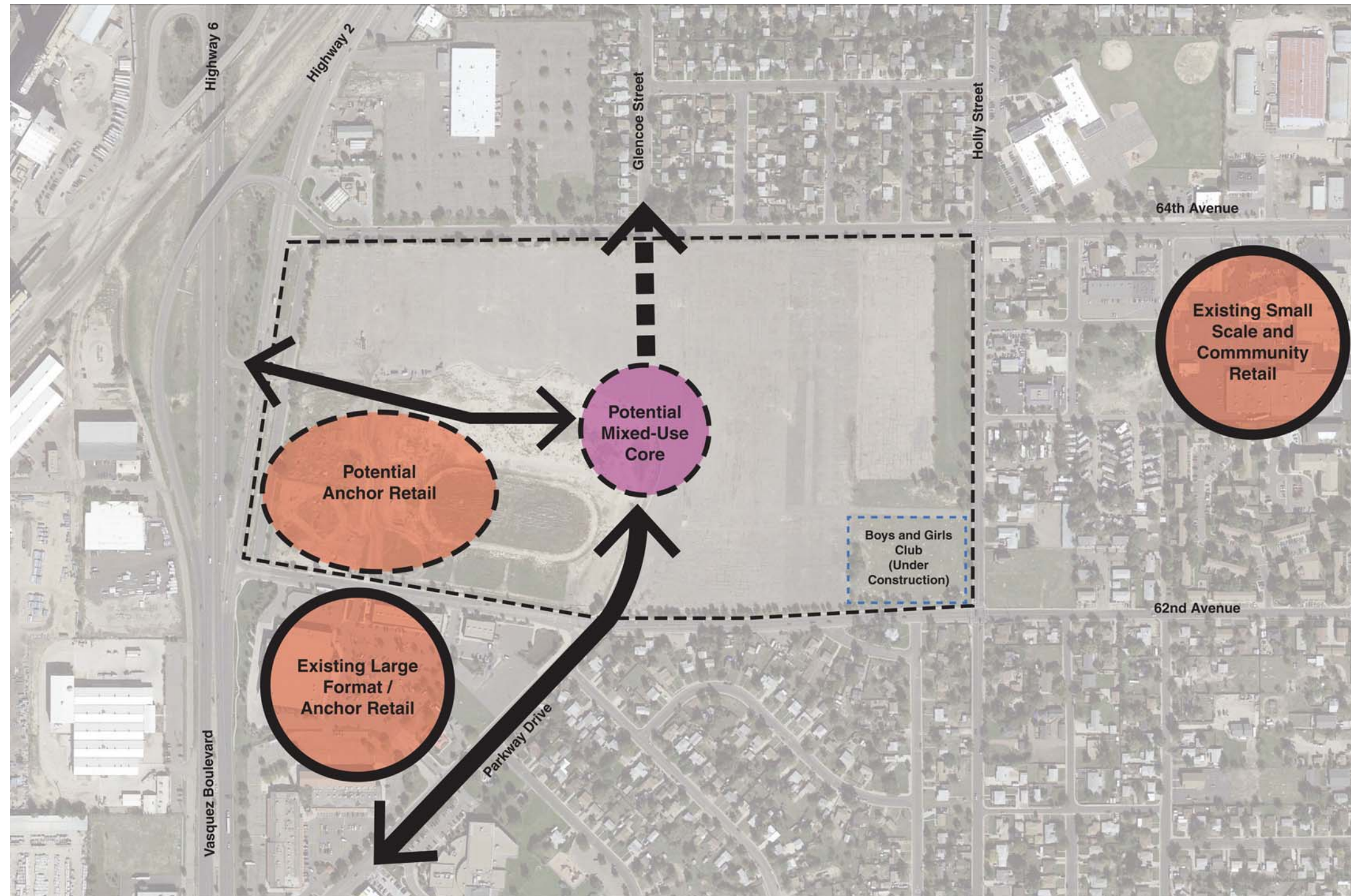
Large anchor stores add stability to local shopping centers.

How do you feel about small street oriented retail options?

How do you feel about large anchor retail options?



Conceptual Land Use



Retail Strategy

street oriented retail



large format/ anchor retail

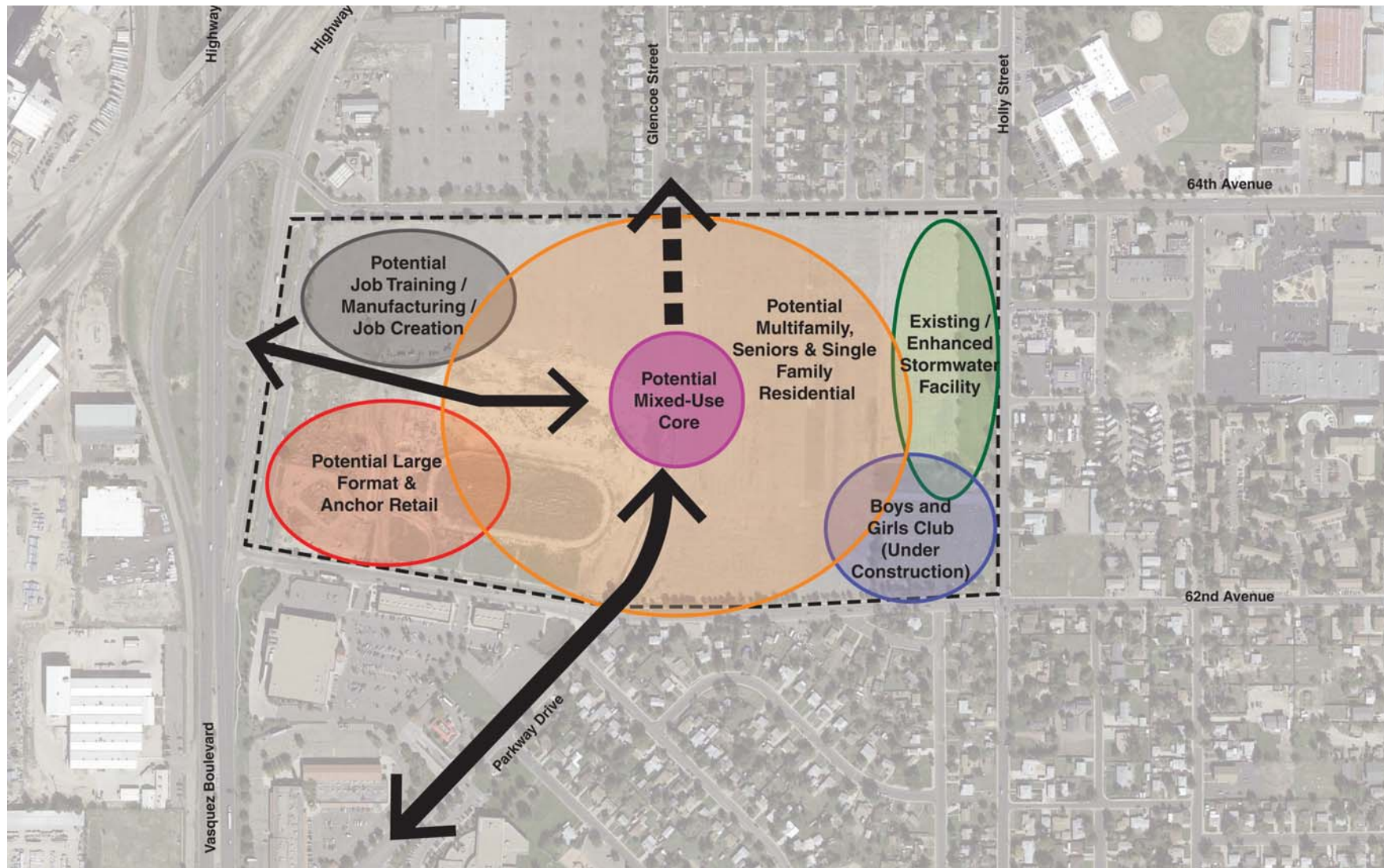


Open Space

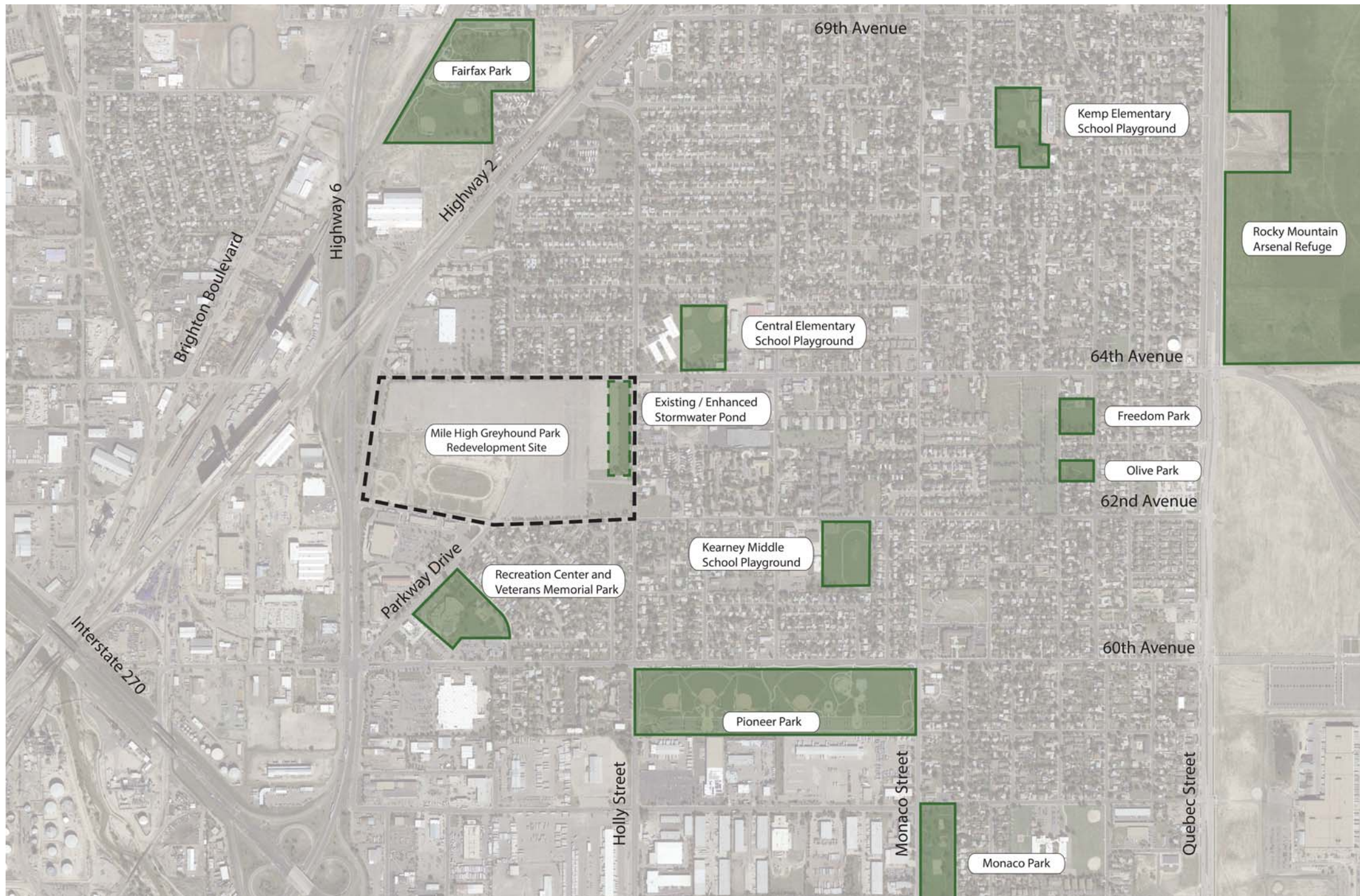
Parks are important to a community's quality of life and support physical health, public engagement, and culture. Parks and open spaces play a major part in defining a community's image and character.

How do you use open space?

What type of activities would best fit with you life style?



Conceptual Land Use



Surrounding Parks and Open Space

open space



stormwater management

